

REFER TO SHEET No.11 FOR SIGNS & LINE MARKING DETAILS.

REFER TO SHEET No.4 FOR SURVEY STATION SETOUT DETAILS.

KERB RETURN No.2
REFER TO SHEET No.7 FOR DETAILS.

DEMOLISH & REMOVE EXISTING KERB RETURN & RECONSTRUCT AS SHOWN. REFER TO SHEET No.7 FOR DETAILS.

RELOCATE TRAFFIC SIGNAL MAST & PITS TO SUIT NEW WORK. REFER TO SHEET No.1 FOR RMS CONTACT DETAILS.

DEMOLISH & REMOVE EXISTING TRAFFIC ISLAND & CONSTRUCT NEW PAVEMENT & MEDIAN AS SHOWN. REFER TO SHEET No.8 FOR DETAILS.

EXISTING SIGNALS TO BE RELOCATED TO SUIT NEW WORK. REFER TO SHEET No.1 FOR RMS CONTACT DETAILS.

DEMOLISH & REMOVE EXISTING MEDIAN & REINSTATE ROAD PAVEMENT IF REQUIRED.

RECONSTRUCT KERB RAMP TO SUIT NEW ALIGNMENT OF INTERSECTION.

ADJUST SERVICE FITTING COVER S TO SUIT NEW WORK. REFER TO SHEET No.1 FOR CONTACT DETAILS.

CONSTRUCT NEW KERB RAMP & SECTION OF FOOTPATH AS SHOWN. REFER TO SHEET No.8 FOR SETOUT DETAILS.

EXISTING LIGHTPOLE TO BE RELOCATED BY OTHERS TO SUIT NEW WORK. REFER TO SHEET No.1 FOR AUSGRID CONTACT DETAILS.

KERB RETURN No.1
REFER TO SHEET No.7 FOR DETAILS.

CAUTION !
MULTIPLE UNDERGROUND SERVICES CONFIRM LOCATION

CONSTRUCT MASS CONCRETE RETAINING WALL WITH WELDMESH FENCE. REFER TO SHEET No.2 FOR DETAILS

DEMOLISH & REMOVE EXISTING KERB RETURN & RECONSTRUCT AS SHOWN. REFER TO SHEET No.7 FOR DETAILS.

CONSTRUCT NEW CONCRETE PATH AS SHOWN. REFER TO SHEET No.2 FOR TYPICAL DETAILS

RECONSTRUCT SECTION OF DRIVEWAY TO SUIT NEW KERB ALIGNMENT.

KERB RETURN No.3
REFER TO SHEET No.7 FOR DETAILS.

DO NOT DISTURB SURVEY MARK. REFER TO COUNCIL'S PROPERTY SURVEYOR FOR PROTECTION MEASURES.

DEMOLISH & REMOVE SECTION OF EXISTING MEDIAN & RECONSTRUCT AS SHOWN. REFER TO SHEET No.7 FOR DETAILS.

THIS PLAN MUST BE READ IN CONJUNCTION WITH THE ROADS & MARITIME SERVICES TCS No.1737 DRAWING No.2017/00XXXX

WARNING
BWARE OF UNDERGROUND SERVICES
THE LOCATIONS OF UNDERGROUND SERVICES HAVE BEEN INTERPOLATED FROM KNOWN POSITIONS OF VALVES, MANHOLES ETC. AND/OR INFORMATION SUPPLIED BY SERVICE AUTHORITIES. NO RESPONSIBILITY IS TAKEN FOR THE ACCURACY OF THE INTERPOLATED INFORMATION SUPPLIED. ENSURE ALL SERVICES ARE ACCURATELY LOCATED PRIOR TO COMMENCEMENT OF WORK.

RETAINING WALL SETOUT DETAILS

| POINT | EASTING | NORTHING | LEVEL | REMARKS |
|-------|------------|-------------|---------|------------------|
| A | 322214.318 | 6266684.532 | 182.430 | END OF WALL |
| B | 322212.719 | 6266698.069 | 182.550 | MIDPOINT ON WALL |
| C | 322207.198 | 6266714.021 | 182.122 | END OF WALL |

Hornsby Shire Council
Design & Construction
Branch

Designer
S. COMISH
Signed: _____
Drawn
T. PELL
Signed: _____
Surveyor
T. PELL
Signed: _____
Project Identifier \ CAD File Name
H:\DuffyChilvers_TR_100331\Design\ACAD\Duffy Chilvers Design.dwg
TRIM Document Number
NA

| Issue | Description | Name | Initial | Date |
|-------|----------------------------|-----------|---------|------|
| 1 | ISSUED TO RMS FOR APPROVAL | M. NOBILO | | |

Design not to be amended without authorisation by Manager Design & Construction

Bar Scales
0 2 4 6 8 10m
SCALE 1:200 @ A1
DRAFT
not for construction
HORNSBY SHIRE COUNCIL
PO BOX 37, HORNSBY NSW 1630
DX 9655 HORNSBY

DUFFY AVENUE, THORNLEIGH
PROPOSED INTERSECTION IMPROVEMENTS
AT CHILVERS ROAD & THE ESPLANADE
GENERAL WORKS & SERVICES PLAN
SHEET 1 OF 2

| | | | |
|--------------------|---------------|-----------|----------|
| Project Number | 100331 | | |
| Sheet of | 5 | 11 | Issue |
| | | | 1 |
| HSC Drawing Number | 121.22 | | |

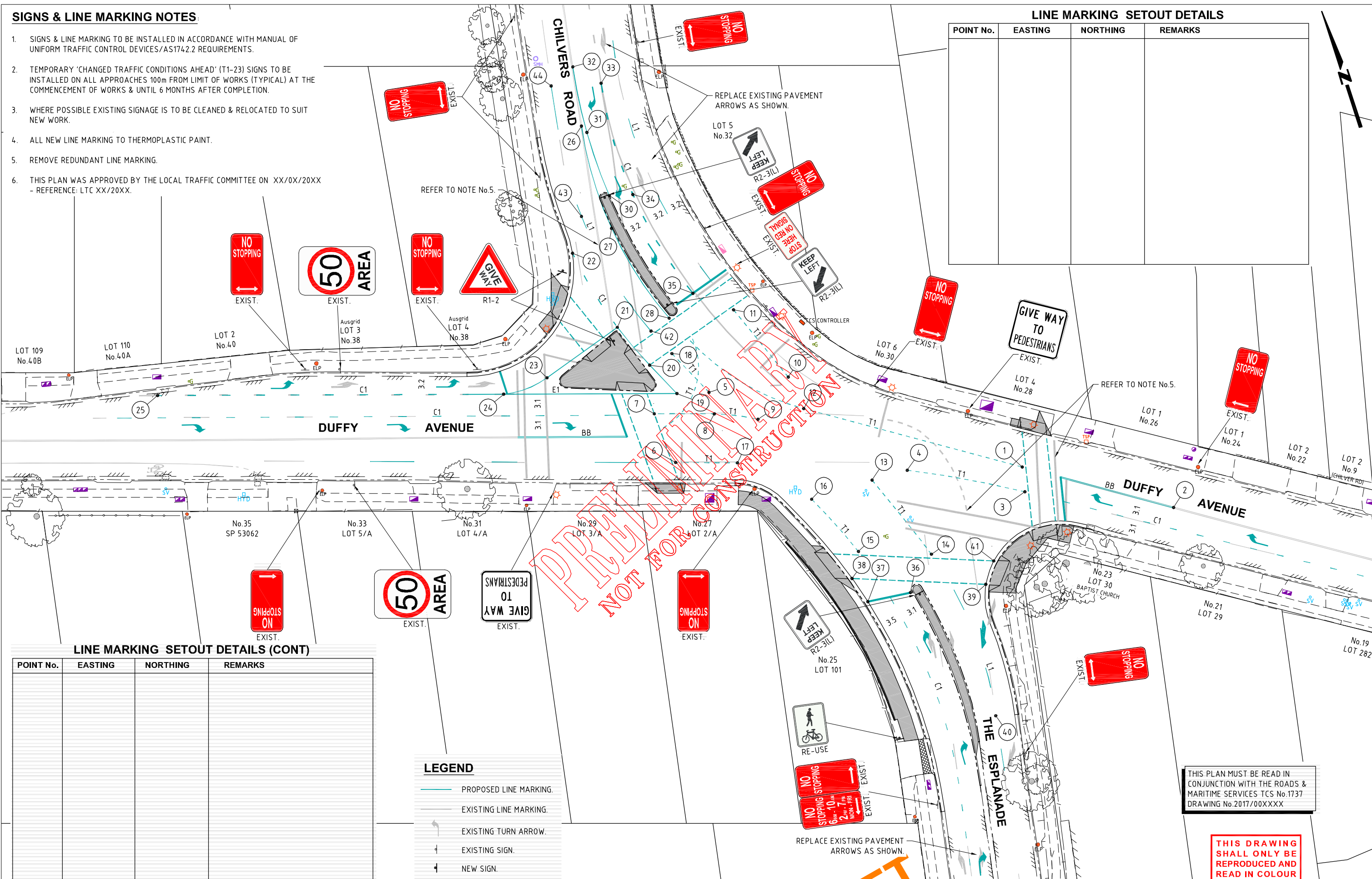
Authorised for release - Manager Design & Construction
Name: **R. RAJCA** Signed: _____ Date: _____

SIGNS & LINE MARKING NOTES:

1. SIGNS & LINE MARKING TO BE INSTALLED IN ACCORDANCE WITH MANUAL OF UNIFORM TRAFFIC CONTROL DEVICES/AS1742.2 REQUIREMENTS.
2. TEMPORARY 'CHANGED TRAFFIC CONDITIONS AHEAD' (T1-23) SIGNS TO BE INSTALLED ON ALL APPROACHES 100m FROM LIMIT OF WORKS (TYPICAL) AT THE COMMENCEMENT OF WORKS & UNTIL 6 MONTHS AFTER COMPLETION.
3. WHERE POSSIBLE EXISTING SIGNAGE IS TO BE CLEANED & RELOCATED TO SUIT NEW WORK.
4. ALL NEW LINE MARKING TO THERMOPLASTIC PAINT.
5. REMOVE REDUNDANT LINE MARKING.
6. THIS PLAN WAS APPROVED BY THE LOCAL TRAFFIC COMMITTEE ON XX/0X/20XX - REFERENCE: LTC XX/20XX.

LINE MARKING SETOUT DETAILS

| POINT No. | EASTING | NORTHING | REMARKS |
|-----------|---------|----------|---------|
| | | | |
| | | | |
| | | | |
| | | | |
| | | | |
| | | | |
| | | | |
| | | | |
| | | | |
| | | | |
| | | | |



LINE MARKING SETOUT DETAILS (CONT)

| POINT No. | EASTING | NORTHING | REMARKS |
|-----------|---------|----------|---------|
| | | | |
| | | | |
| | | | |
| | | | |
| | | | |
| | | | |
| | | | |
| | | | |
| | | | |
| | | | |
| | | | |

LEGEND

- PROPOSED LINE MARKING.
- EXISTING LINE MARKING.
- EXISTING TURN ARROW.
- EXISTING SIGN.
- NEW SIGN.

THIS PLAN MUST BE READ IN CONJUNCTION WITH THE ROADS & MARITIME SERVICES TCS No.1737 DRAWING No.2017/00XXXX

THIS DRAWING SHALL ONLY BE REPRODUCED AND READ IN COLOUR

**Hornsby Shire Council
Design & Construction
Branch**
TELEPHONE: (02) 9847 6666
FACSIMILE: (02) 9847 6999
Authorised for release - Manager Design & Construction
Name: R. RAJCA

Designer
S. COMISH
Design Checked-Design Team Leader
Signed:
Drawn
T. PELL
Surveyor
T.PELL
Project Identifier \\CAD File Name
H:\DuffyChilvers_TR_100331\Design\ACAD\Duffy Chilvers Design.dwg
TRIM Document Number
NA

| | | | | |
|-------|----------------------------|-----------|---------|------|
| 1 | ISSUED TO RMS FOR APPROVAL | M. NOBILO | Initial | Date |
| Issue | Description | Name | Initial | Date |

Design not to be amended without authorisation by Manager Design & Construction

Bar Scales
0 5 10 15m
SCALE 1:250
@ A1
HORNSBY SHIRE COUNCIL
PO BOX 37, HORNSBY NSW 1630
DX 9855 HORNSBY

**DUFFY AVENUE, THORNLEIGH
PROPOSED INTERSECTION IMPROVEMENTS
AT CHILVERS ROAD & THE ESPLANADE**
SIGNS & LINE MARKING PLAN

| | | | |
|--------------------|--------|----|---------|
| Project Number | 100331 | | |
| Sheet of | 11 | 11 | Issue 1 |
| HSC Drawing Number | 121.22 | | |