

24 August 2015

Ref: N0062

Dear Resident

Trelawney Street Compound site establishment: clearing of vegetation and removal of buildings at Pennant Hills Road, Trelawney Street and Loch Maree Avenue, Thornleigh

NorthConnex is a nine kilometre tunnel that will link the M1 Pacific Motorway at Wahroonga to the Hills M2 Motorway at West Pennant Hills, removing around 5,000 trucks off Pennant Hills Road.

Lendlease Bouygues Joint Venture has been awarded the contract to design and deliver the work.

What are we doing?

In preparation for the NorthConnex tunnelling work, the project team will be establishing a site compound in Trelawney Street, Thornleigh. To construct the compound the project team will be:

- Clearing trees and vegetation from eight properties – 217, 221, 223, 225, 225A and 227 Pennant Hills Road, 2 Trelawney Street and 3 Loch Maree Avenue
- Removing the existing buildings and structures at those properties, as indicated in the map overleaf.

Vegetation clearing

The project team will be clearing and removing trees and vegetation located within the boundaries of properties acquired by Roads and Maritime Services for NorthConnex. Plant and equipment used for this work includes chainsaws, mulchers, wood chippers and trucks.

Work will start on 31 August and continue for around four weeks, weather permitting.

Building removal

The project team will be removing the existing buildings and structures from the properties.

The first stage of work involves the removal of internal building structures by hand. Work will start on 31 August and will take around six weeks to complete.

During this time, hazardous materials such as asbestos may need to be removed. Discovering these materials is not an unusual or unexpected occurrence, as it was common for asbestos to be used in older buildings.

Licensed asbestos contractors will ensure the safety of workers and residents in the area by organising the safe removal. Licensed asbestos contractors will carry out this work as required with experts controlling the situation at all times. Air quality monitoring will take place while removal is ongoing.

Return 
local streets to local communities

Up to 
5,000 trucks per day
off Pennant Hills Road

Up to 
15 mins travel time saving


Deliver **improvements**
to local **air quality**

Up to 
21 traffic lights bypassed

improve 
the efficient movement of
state and national freight


Better and more
reliable trips
for people, businesses and freight

The second stage involves the removal of the remaining structures with an excavator using hydraulic shears and hammers. This work will take around eight weeks to complete and will follow hand work progressively.

Equipment that may be used includes excavators with hammers, trucks, saws, scaffold and elevated platforms.

We will make every effort to minimise impacts of work by:

- Turning off machinery when not in use
- Using non-tonal reversing beepers on all machinery
- Using dust mitigation strategies such as watering down the site and not removing structures during strong winds
- Limiting parking on the road outside and parking as much as possible in the driveways of the vacated properties.

Work hours

Work will be carried out from 7am to 6pm Mondays to Fridays and Saturdays from 8am to 1pm, weather permitting. We will notify you in advance if we need to do any work outside these times.

Temporary traffic changes

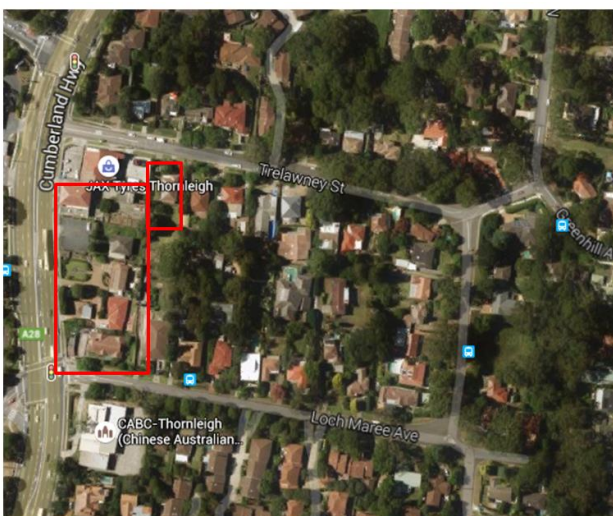
Appropriate traffic and safety management procedures will be in place during this work and there will be no impact on access to neighbouring driveways.

We thank you for your patience, and if you have any questions, comments or complaints, please do not hesitate to call members of the project team on **1800 997 057**, email <mailto:enquiries@northconnex.com.au> or visit the NorthConnex Community Information Centre at 354 - 356 Pennant Hills Road, Pennant Hills, open every Tuesday from 9am to 12noon and Thursdays from 9am to 4pm and the last Saturday of the month until November 2015.

Yours sincerely

NorthConnex Project Team

Map shows location of building removal work and vegetation clearing



Key:

Work area 



www.northconnex.com.au



enquiries@northconnex.com.au



1800 997 057 (free call)