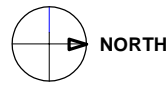


DESIGN/DRAWN HSC	PROJECT NUMBER -	DRAWING NUMBER LTC 21/2023	ISSUE 1
APPROVED LTC	SHEET NUMBER 1 OF 2	SCALE N/A	DATE 10-08-2023



Traffic and Road Safety Branch

Hornsby Shire Council
296 Pacific Highway, Hornsby
PO Box 37, Hornsby NSW 1630

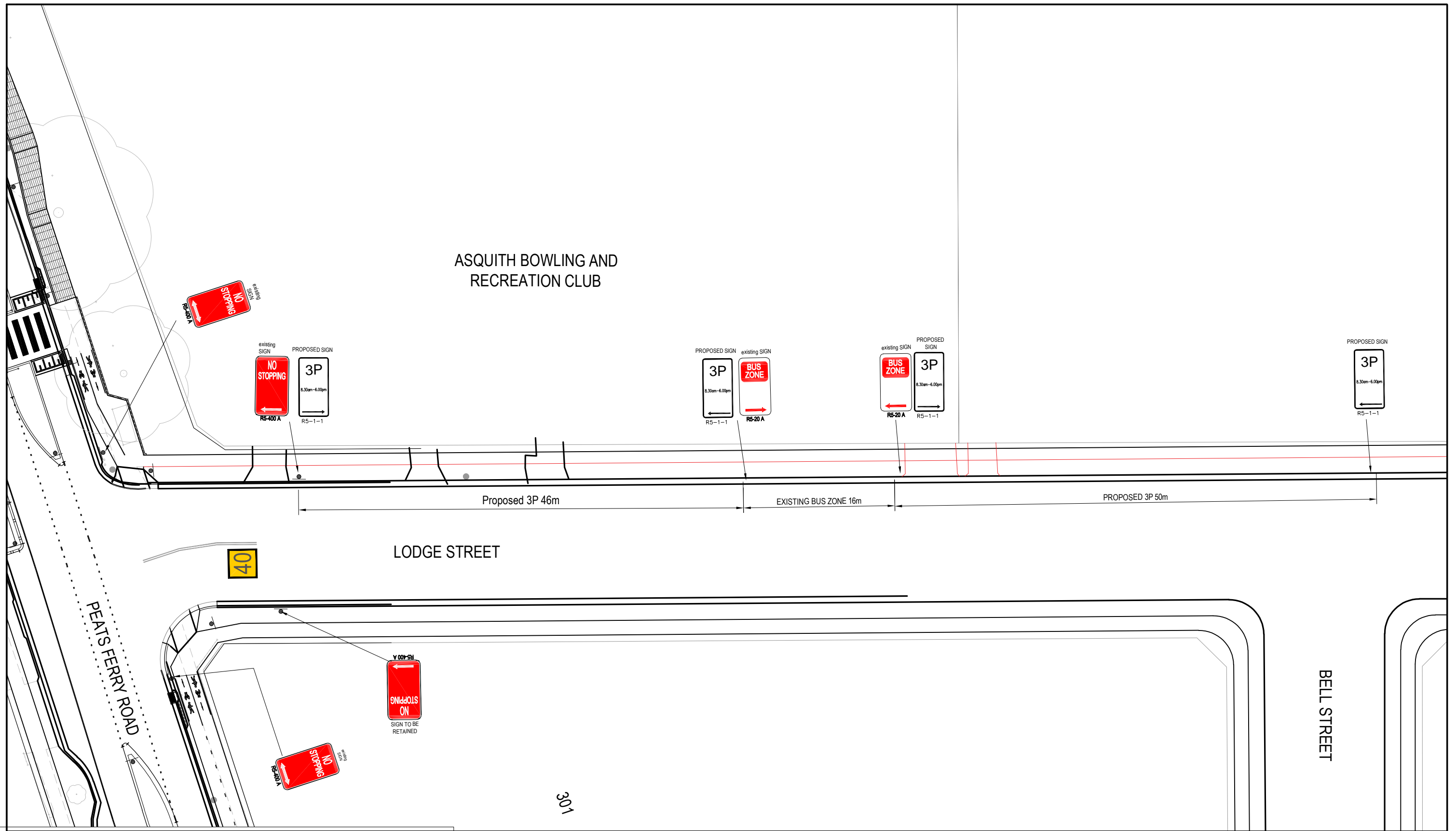
Telephone 9847 6666
8.30am-5pm Monday to Friday

hornsby.nsw.gov.au

Peats Ferry Road, Citrus Avenue, Lodge Street - HORNSBY
Proposed Parking Restrictions

CONCEPT PLAN





DESIGN/DRAWN HSC	PROJECT NUMBER -	DRAWING NUMBER LTC 21/2023	ISSUE 1
APPROVED LTC	SHEET NUMBER 2 OF 2	SCALE N/A	DATE 10-08-2023

