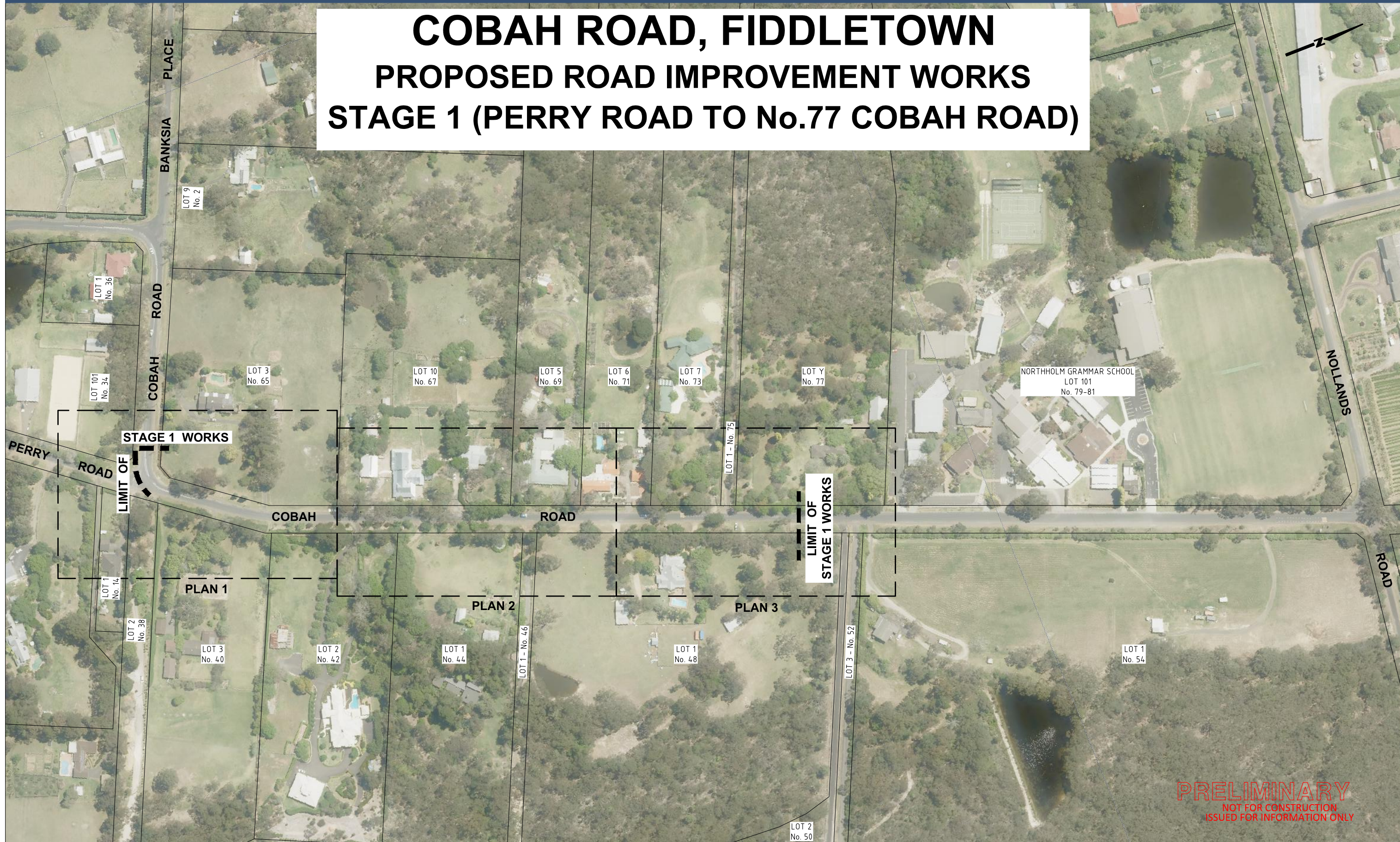


COBAH ROAD, FIDDLETOWN PROPOSED ROAD IMPROVEMENT WORKS STAGE 1 (PERRY ROAD TO No.77 COBAH ROAD)

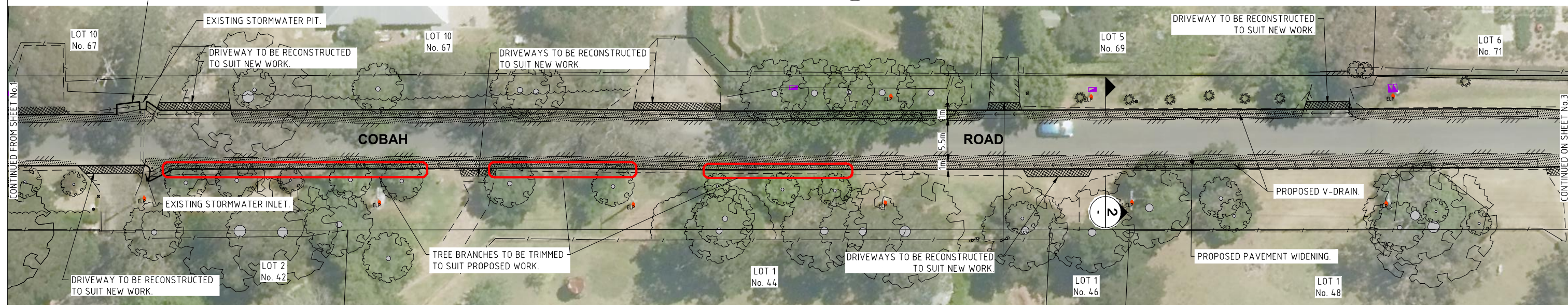
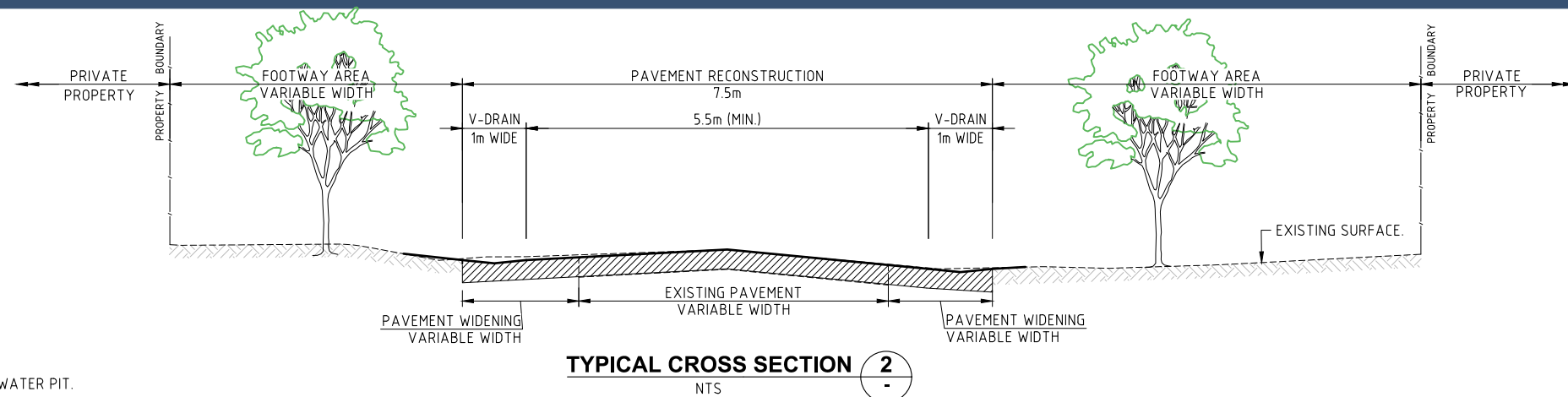


PRELIMINARY
NOT FOR CONSTRUCTION
ISSUED FOR INFORMATION ONLY



COBAH ROAD
LOOKING NORTH FROM PERRY ROAD

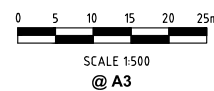
PRELIMINARY
NOT FOR CONSTRUCTION
ISSUED FOR INFORMATION ONLY



COBAH ROAD
LOOKING NORTH FROM OPPOSITE No.42



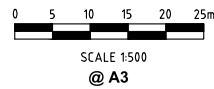
COBAH ROAD
LOOKING SOUTH FROM OPPOSITE No.67



PRELIMINARY
NOT FOR CONSTRUCTION
ISSUED FOR INFORMATION ONLY



PLAN
SCALE 1:500



PRELIMINARY
NOT FOR CONSTRUCTION
ISSUED FOR INFORMATION ONLY