

EXAMPLE OF PEDESTRIAN REFUGE ISLAND

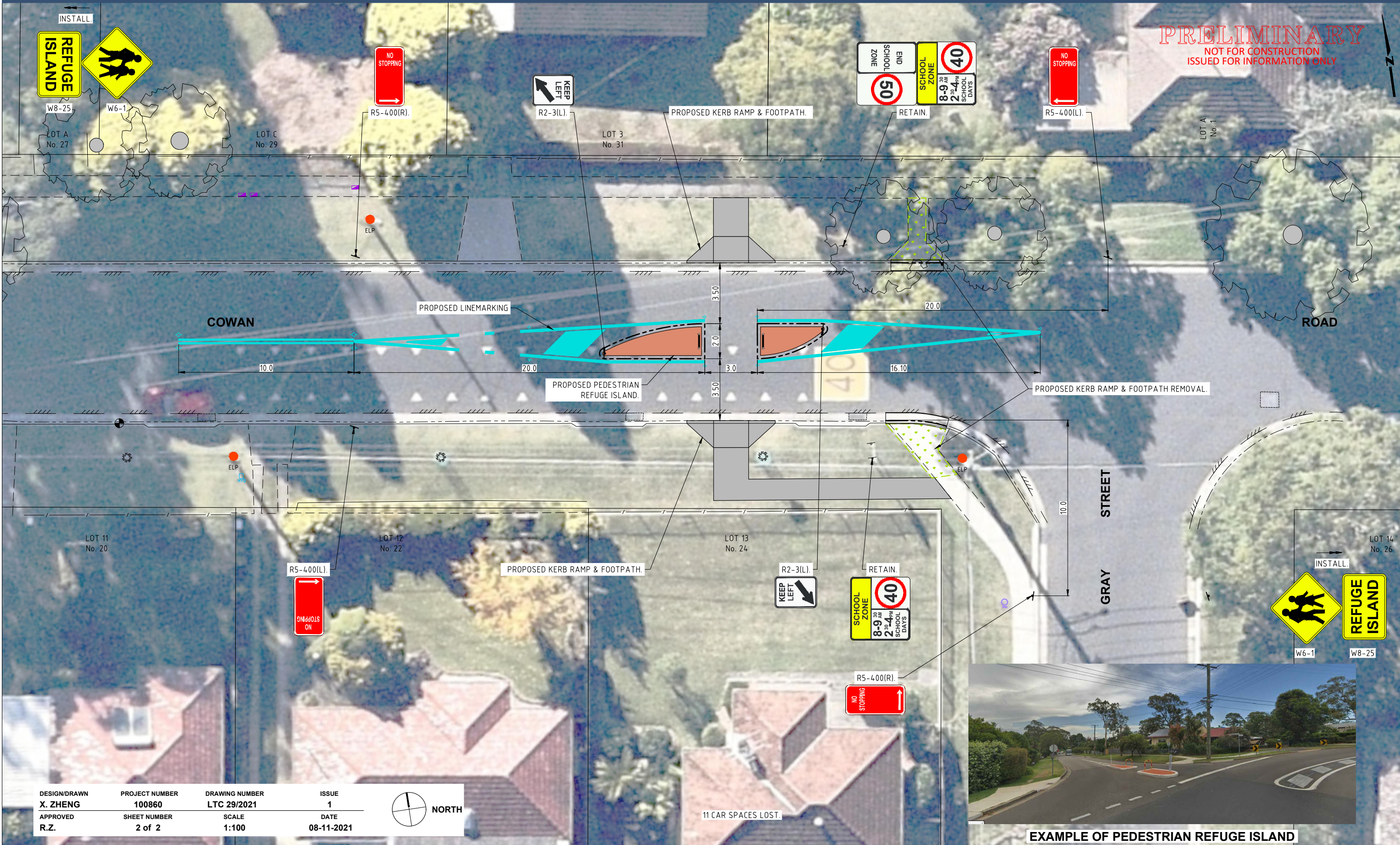
DESIGN/DRAWN	PROJECT NUMBER	DRAWING NUMBER	ISSUE
X. ZHENG	100860	LTC 29/2021	1
APPROVED	SHEET NUMBER	SCALE	DATE
R.Z.	1 of 2	1:100	08-11-2021



NOTE: 5 CAR SPACES LOST WITH THIS PROPOSAL.

**PRELIMINARY**  
NOT FOR CONSTRUCTION  
ISSUED FOR INFORMATION ONLY

**PRELIMINARY**  
NOT FOR CONSTRUCTION  
ISSUED FOR INFORMATION ONLY



DESIGN/DRAWN <b>X. ZHENG</b>	PROJECT NUMBER <b>100860</b>	DRAWING NUMBER <b>LTC 29/2021</b>	ISSUE <b>1</b>
APPROVED <b>R.Z.</b>	SHEET NUMBER <b>2 of 2</b>	SCALE <b>1:100</b>	DATE <b>08-11-2021</b>



Traffic and Road Safety Branch  
Hornsby Shire Council  
296 Peats Ferry Road, Hornsby  
PO Box 37, Hornsby NSW 1630  
  
Telephone 9847 6666  
8.30am-5pm Monday to Friday  
[hornsby.nsw.gov.au](http://hornsby.nsw.gov.au)

**COWAN ROAD, MOUNT COLAH EAST  
PROPOSED PEDESTRIAN REFUGE ISLAND**  
FOR LTC CONSIDERATION - NOVEMBER 2021  
SHEET 2 OF 2

