
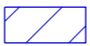








NOTES

- NOT ALL DIMENSIONS SHOWN ARE TO SCALE.
- LOCATION OF SIGNS ARE TO BE CONFIRMED ON-SITE TO ENSURE APPROPRIATE VISIBILITY.
- ALL SIGNS TO BE MINIMUM SIZE A.
- ALL SIGNS TO BE CLASS 1 REFLECTIVE OR DIAMOND GRADE.
- ALL TRAFFIC CONTROL PLANS ARE TO BE IMPLEMENTED IN ACCORDANCE WITH THE RMS "TRAFFIC CONTROL AT WORK SITES" MANUAL, VER 4 (RMS 2010) AND AUSTRALIAN STANDARDS AS1742.3:2009 MANUAL OF UNIFORM TRAFFIC CONTROL DEVICES, PART 3: TRAFFIC CONTROL DEVICES FOR WORKS ON ROADS.
- THIS TRAFFIC CONTROL PLAN MUST BE SETUP BY A PERSON HOLDING AN "IMPLEMENT TRAFFIC CONTROL PLANS" (YELLOW) TICKET AND THE RMS TRAFFIC CONTROL AT WORK SITES CHECKLIST SHALL BE COMPLETED PRIOR TO IMPLEMENTATION.
- THE ACCREDITED PERSONNEL SHALL IMPLEMENT THE APPROVED TCP BEFORE ANY PHYSICAL WORK COMMENCES AND ENSURE A COPY OF THE TCP IS KEPT ON-SITE. THE ACCREDITED PERSONNEL SHALL ALSO DRIVE THROUGH THE SITE BEFORE WORKS BEGIN TO ENSURE THAT THE TCP HAS BEEN IMPLEMENTED CORRECTLY AND THAT IT WILL WARN, INSTRUCT AND GUIDE ROAD USERS AS DESIGNED. ANY VARIATIONS MADE TO THE PLAN MUST BE MARKED ON THE PLAN AND INITIALLED BY THE ACCREDITED PERSONNEL.
- IT IS THE RESPONSIBILITY OF AN ACCREDITED PERSONNEL WITH A 'PREPARE TRAFFIC MANAGEMENT PLAN' TICKET TO ENSURE THE FOLLOWING:
 - THE INTEGRITY OF ALL TRAFFIC CONTROL MEASURES THROUGH TO THE FINAL REMOVAL. THIS INCLUDES DAILY CHECKS OF ALL SIGNS AND DEVICES. THE CORRESPONDING RECORDS OF CHECKS SHALL BE KEPT ON FILE FOR AUDITING PURPOSES.
 - VEHICULAR ACCESS AND SERVICING REQUIREMENTS ARE TO BE MAINTAINED AT ALL TIMES TO ADJACENT PROPERTIES AFFECTED BY TRAFFIC CONTROL MEASURES.
 - AT ALL TIMES AN UP-TO-DATE COPY OF "TRAFFIC CONTROL AT WORK SITES" SHOULD BE AVAILABLE FOR REFERENCE AND IMPLEMENTATION AS REQUIRED ON-SITE.
- ALL WORKERS WILL BE CONFINED TO THE DEDICATED WORKS AREA SHOWN ON THE PLAN.
- IF THE WORKSITE IS LEFT UNATTENDED IT IS THE CONTRACTOR'S DUTY TO ENSURE THAT THE APPROPRIATE MEASURES ARE TAKEN TO PROVIDE A SAFE ENVIRONMENT FOR VEHICLES AND PEDESTRIANS TO RELEVANT AUSTRALIAN STANDARDS.
- TRAFFIC CONTROLLER IS NOT REQUIRED AT THE ACCESS FULL TIME. SHOULD CONDITIONS BE MODIFIED AND TRAFFIC CONTROLLERS REQUIRED TO STOP GENERAL TRAFFIC, THEY ARE TO BE SUITABLY ACCREDITED TO AUSTRALIAN STANDARDS AND RMS ACCREDITATION AS REQUIRED. WHEN REQUIRED, T1-34 AND T1-10 SIGNS ARE TO BE SET UP IN ACCORDANCE TO AUSTRALIAN STANDARDS AND RMS REQUIREMENTS.
- ALL SIGNAGE IS TO BE CLEAN, CLEARLY VISIBLE AND NOT OBSCURED.
- ALL NIGHT WORK OR DAY/NIGHT MUST USE RMS STANDARD NIGHT SIGNS AND DEVICES UNLESS OTHERWISE STATED.
- ALL WORKERS MUST ADHERE TO THE APPLICABLE SAFE WORK DISTANCE AS DESCRIBED IN AS1742.3:2009.
- ALL DISTANCES BETWEEN SIGNS ARE TO BE IN ACCORDANCE WITH SECTION 2.5.2 OF AS1742.3:2009. HOWEVER, MODIFICATIONS CAN BE MADE TO SUIT SITE CONDITIONS.

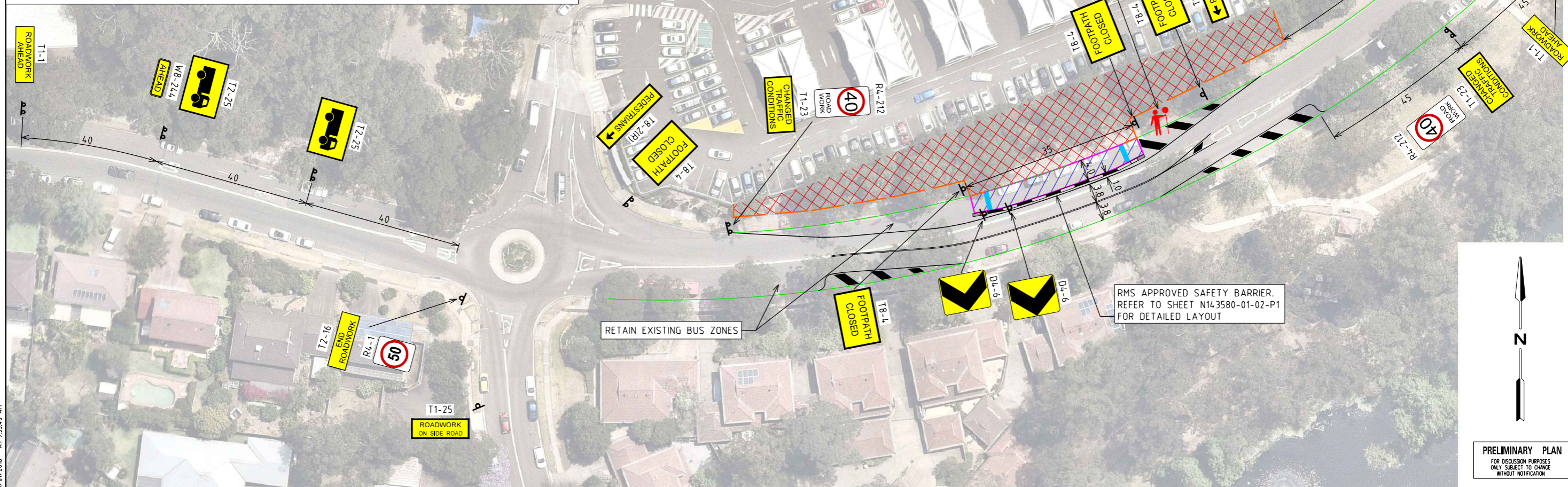
LEGEND

-  WORK SITE
-  WORK ZONE
-  CONSTRUCTION FENCING
-  SIGN POST
-  ACCREDITED TRAFFIC CONTROLLER
-  CONSTRUCTION FENCING WITH APPROPRIATE CLOTH MATERIAL
-  RMS APPROVED SAFETY BARRIERS WITH CONSTRUCTION FENCING AND APPROPRIATE CLOTH MATERIAL
-  CONSTRUCTION ACCESS GATE

CERTIFICATION

THE UNDERSIGNED HAS COMPLETED AND OBTAINED:
 - PREPARE A WORK ZONE TRAFFIC MANAGEMENT PLAN
 AND IS SUITABLY EXPERIENCED TO DESIGN, SELECT AND
 MODIFY TRAFFIC CONTROL PLANS

CERTIFICATE NO: 0039450274
 PREPARE A WORK ZONE TMP CARD
 ASHISH MODESSA



PRELIMINARY PLAN
 FOR DISCUSSION PURPOSES
 ONLY SUBJECT TO CHANGE
 WITHOUT NOTIFICATION

PLOTTED BY : Clifford Aguirre ON 25/01/2018 AT 9:53:43 AM

AMENDMENTS			
ISSUE	DATE	DESCRIPTION	APP.
P2	25.01.18	VEHICLE SITE ACCESS MOVEMENT REQUIREMENT SPECIFIED	CBA ADM NXV
P1	20.12.17	INITIAL ISSUE	CBA ADM NXV

GENERAL NOTES

- ALL DIMENSIONS AND RADII ARE IN METRES AND ARE TO THE FACE OF KERB AND CHANNEL.
- BASE INFORMATION OBTAINED FROM NEARMAP AERIAL PHOTOGRAPHY DATABASE DATED 2 DECEMBER 2016. GTA CONSULTANTS DOES NOT TAKE ANY RESPONSIBILITY FOR THE ACCURACY OF THE EXISTING CONDITIONS BASE (AERIAL PHOTOGRAPHY) ON WHICH THE SETOUT DETAIL IS BASED. PRIOR TO COMMENCEMENT OF CONSTRUCTION, THE EXISTING CONDITIONS INCLUDING UNDERGROUND SERVICES SHOULD BE VERIFIED ON SITE.
- LOCAL ROAD - SHEPHERDS DRIVE - SPEED ZONE 50KM/H
- DESIGN VEHICLE - 12.5m LRV

DESIGNED A. MODESSA	DESIGN CHECK -
DRAWN C. AGUIRRE	DRAFTING CHECK -
APPROVED BY N. VUKIC	DATE APPROVED FOR INITIAL ISSUE 20 DECEMBER 2017
SCALE A3	CAD FILE NO. N143580-01-P2.dgn

GTA consultants
 www.gta.com.au

Melbourne 03 9851 9600
 Sydney 02 8448 1800
 Brisbane 07 3113 5000
 Canberra 02 6243 9400
 Adelaide 08 8334 3600
 Gold Coast 07 5510 4814
 Townsville 07 4722 2765
 Perth 08 6169 1000

CLIENT **MAINBRACE CONSTRUCTIONS**
NSW PTY LTD

CHERRYBROOK VILLAGE SHOPPING CENTRE
STAGE 1

TRAFFIC GUIDANCE SCHEME

DRAWING NO. **N143580-01-01** SHEET **01 OF 02** ISSUE **P2**