

YALLAMBEE ROAD, BEROWRA PROPOSED PEDESTRIAN REFUGE ISLANDS

LEGEND

	EXISTING KERB & GUTTER.
	EXISTING STORMWATER PIPE.
	EXISTING CONCRETE PATH EDGE.
	EXISTING FENCE.
	EXISTING BUILDING.
	EXISTING POWER POLE.
	EXISTING TELSTRA PIT.
	EXISTING SEWER MAINTENANCE HOLE.
	EXISTING HYDRANT.
	EXISTING STOP VALVE.
	SURVEY TRAVERSE STATION.
	EXISTING SEWER MAIN.
	EXISTING WATER MAIN.
	EXISTING U/G ELECTRICAL CABLES.
	EXISTING U/G TELSTRA CABLES.
	EXISTING GAS MAIN.
	EXISTING OVERHEAD ELECTRICAL CABLES.
	EXISTING TREE.
	EXISTING TREE TO BE REMOVED APPROVED BY TREE MANAGEMENT GROUP. REFER TO GENERAL NOTES FOR CONTACT DETAILS.
	PROPOSED TREE.
	PROPOSED KERB & GUTTER.
	PROPOSED MEDIAN KERB.
	PROPOSED TURF.
	NEW BROOMED FINISH 25MPa CONCRETE MEDIAN INFILL (COLOUR: TERRACOTTA).
	EXTENT OF NEW FOOTPATH CONSTRUCTION. ALL PATHS N25 CONCRETE 80mm THICK (COLOUR: PLAIN CONCRETE).
	EXTENT OF NEW PAVEMENT CONSTRUCTION (REFER TO TYPICAL SECTION ON SHEET No.2 FOR DETAILS).
	PROPOSED 0.455m x 0.315m x 0.2m KEYSTONE RETAINING WALL (COLOUR: CHARCOAL).
	PROPOSED SUBSOIL DRAINAGE LINE.

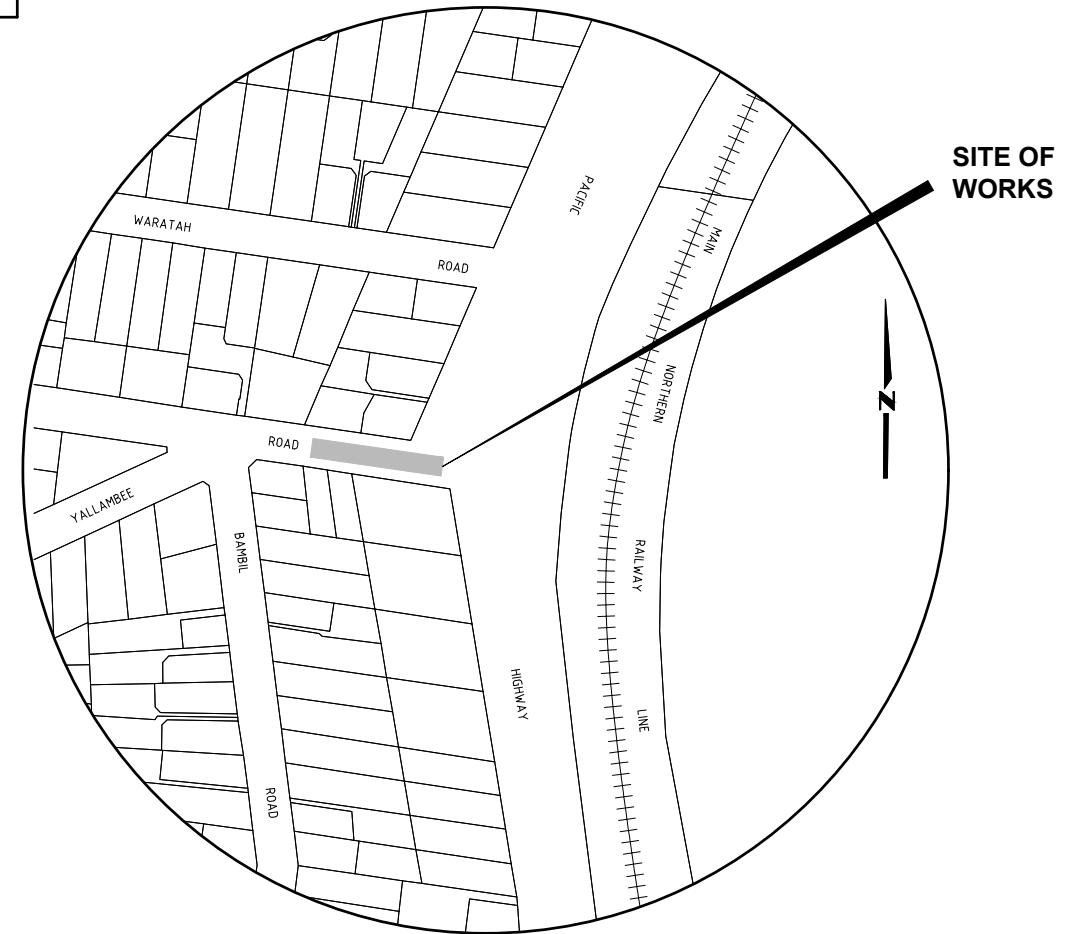
DRAWING SCHEDULE		
SHEET No.	TITLE	ISSUE
1	DRAWING SCHEDULE, LOCALITY PLAN, GENERAL NOTES & LEGEND.	1
2	CONCRETE NOTES, PAVEMENT DETAIL, JOINT DETAILS & TYPICAL SECTION OF REFUGE ISLAND.	1
3	GENERAL WORKS & SERVICES PLAN.	1
4	SETOUT DETAILS.	1
5	RETAINING WALL SETOUT DETAILS.	1
6	FOOTPATH & RETAINING WALL LONG SECTIONS & KERB RAMP SECTIONS.	1
7	SIGNS & LINE MARKING PLAN.	1

GENERAL NOTES:

- ALL WORKS TO BE CARRIED OUT IN ACCORDANCE WITH THE REQUIREMENTS & SPECIFICATIONS OF HORNSBY SHIRE COUNCIL.
- PROVIDE TRAFFIC MANAGEMENT, LINE MARKING & SIGNAGE IN ACCORDANCE WITH THE TRANSPORT FOR NEW SOUTH WALES "TRAFFIC CONTROL AT WORK SITES" TECHNICAL MANUAL & AS1742.3 REQUIREMENTS.
- SERVICES SHOWN ON THESE PLANS HAVE BEEN LOCATED FROM INFORMATION SUPPLIED FROM THE RELEVANT AUTHORITIES VIA A "DIAL BEFORE YOU DIG" ENQUIRY. THE LOCATION OF SERVICES SHOWN ON THESE DRAWINGS HAVE BEEN PLOTTED AS ACCURATELY AS POSSIBLE FROM DIAGRAMS PROVIDED BY SERVICE AUTHORITIES & FIELD INVESTIGATIONS & ARE TO BE VERIFIED PRIOR TO CONSTRUCTION.
- EROSION & SEDIMENT CONTROL MEASURES ARE TO BE INSTALLED IN ACCORDANCE WITH THE LANDCOM PUBLICATION:- "MANAGING URBAN STORMWATER, SOILS & CONSTRUCTION" Vol. 1, 4th EDITION.
- ALL DISTURBED AREAS OF THE SITE ARE TO BE REINSTATED WITH EXISTING OR MATCHING MATERIALS UNLESS NOTED OTHERWISE AT THE COMPLETION OF THE WORKS.
- WHERE WORKS ARE ADJACENT TO EXISTING STRUCTURES UNDERTAKE A DILAPIDATION SURVEY OF EXISTING ADJACENT STRUCTURES BEFORE COMMENCEMENT OF ANY WORKS.
- COUNCIL'S TREE MANAGEMENT GROUP CONTACT DETAILS. CONTACT: Scott Hanell PH: 9847 6993

ACCESS & SAFETY NOTES:

- THE CONTRACTOR SHALL COMPLY WITH ALL STATUTORY & INDUSTRIAL REQUIREMENTS FOR PROVISION OF A SAFE WORKING ENVIRONMENT INCLUDING TRAFFIC CONTROL.
- THE CONTRACTOR SHALL PROVIDE TRAFFIC MANAGEMENT PLANS FOR THE PROPOSED WORKS COMPLETED BY A SUITABLY QUALIFIED PERSON & APPROVED BY COUNCIL/REGULATORY AUTHORITY. WORK IS NOT TO COMMENCE ON SITE PRIOR TO APPROVAL OF TRAFFIC MANAGEMENT SCHEME.
- THE CONTRACTOR SHALL ENSURE THAT AT ALL TIMES ACCESS TO BUILDINGS/RESIDENCES ADJACENT TO THE WORKS IS NOT DISRUPTED.
- WHERE NECESSARY THE CONTRACTOR SHALL PROVIDE SAFE PASSAGE OF EMERGENCY SERVICE VEHICLES AND/OR EMERGENCY SERVICE PERSONNEL THROUGH THE SITE.



LOCALITY PLAN
NOT TO SCALE

TRAFFIC & ROAD SAFETY BRANCH		
Senior Traffic Engineer		
Name: R.ZARZYCKI		Telephone: 9847 6684
Accepted as complying with the general intent of the design brief		
Signed: _____ Date: _____		
Project Number		
100950		
Sheet	of	Issue
1	7	1
HSC Drawing Number		
411.7		

**Hornsby Shire Council
Design & Construction
Branch**

TELEPHONE: (02) 9847 6666
EMAIL: hsc@hornsby.nsw.gov.au
Authorised for release - Manager Design & Construction
Name: R. RAJCA Signed: _____ Date: _____

Designer	X. ZHENG		
Design Checked-Design Team Leader	Signed: _____		
Drawn	X. ZHENG		
Drawing Checked	Signed: _____		
Surveyor	NA	NA	AHD
J. HART	Field Book	Level Book	Datum
Project Identifier\ACAD File Name	H:\Yallambee Rd_TR_100950\Design\ACAD\Yallambee.dwg		
TRM Document Number	D08433686		

Issue	Description	Name	Initial	Date
1	ISSUED FOR CONSTRUCTION	M. DRAKE		

Design not to be amended without authorisation by Manager Design & Construction

Bar Scales
NOT TO SCALE
DO NOT SCALE, USE FIGURED DIMENSIONS ONLY



**YALLAMBEE ROAD, BEROWRA
PROPOSED PEDESTRIAN REFUGE ISLANDS**

DRAWING SCHEDULE, LOCALITY PLAN, GENERAL NOTES & LEGEND

CONCRETE NOTES:

(USING STEEL REINFORCED CONCRETE U.N.O.)

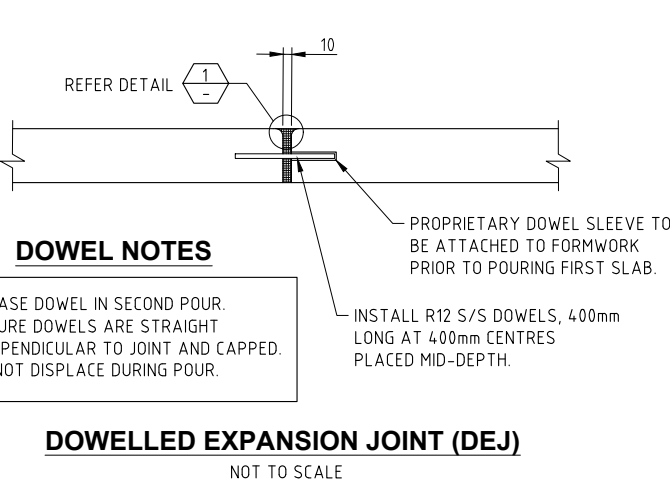
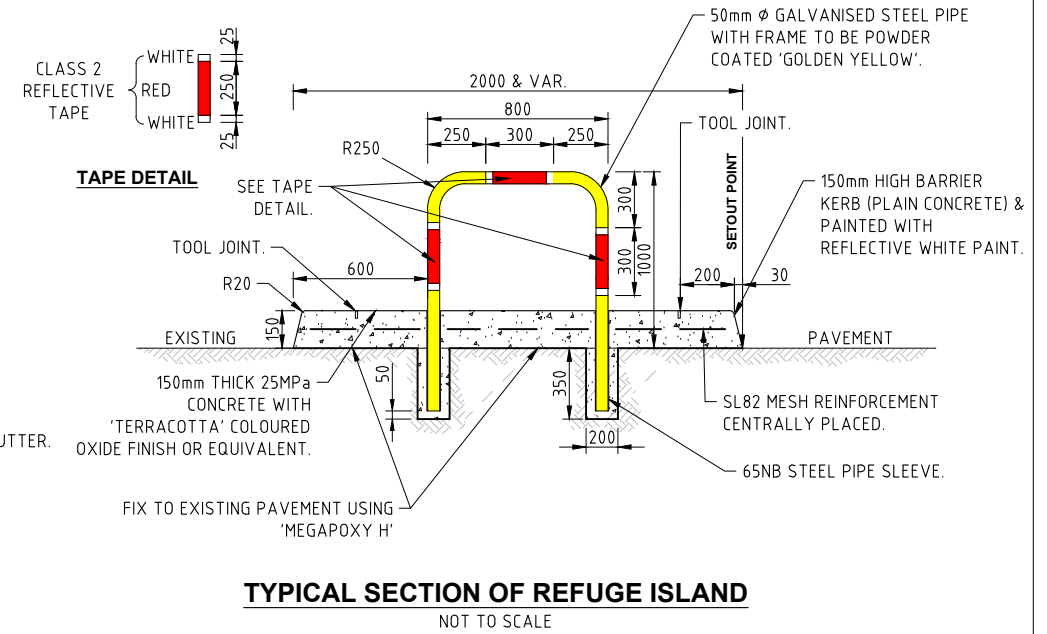
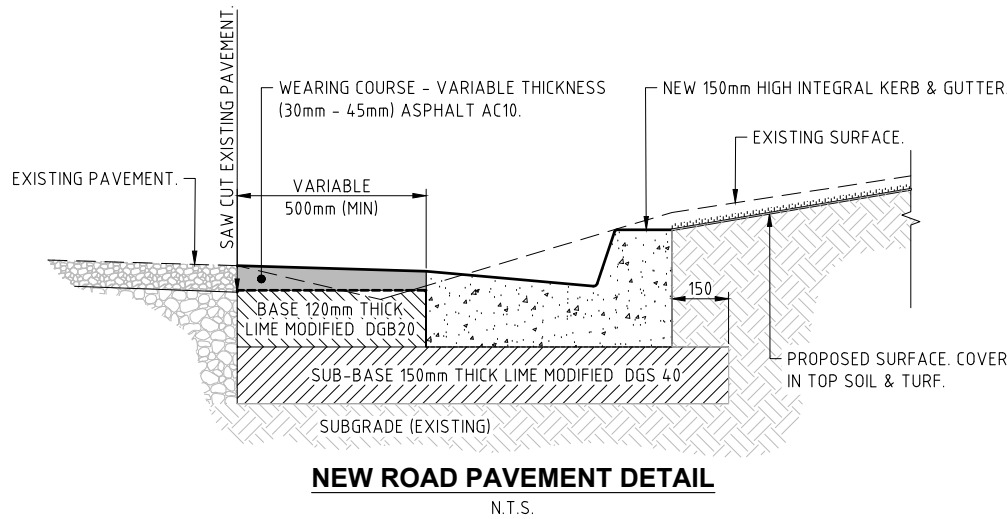
- MATERIALS & CONSTRUCTION: TO AS 3600, AS 3610. STEEL REINFORCEMENT MATERIALS: TO AS 4671.
- CONCRETE QUALITY: TO AS 1379
 READY MIX CONCRETE: TO AS 1379
 a) DO NOT USE ADMIXTURES WITHOUT WRITTEN APPROVAL FROM CONSTRUCTION ENGINEER.
 b) CEMENT: TYPE 'GP' OR 'GB' TO AS 3972.
 c) MAXIMUM SIZE OF COARSE AGGREGATE: 20mm.
 d) CONCRETE SLUMP: 80mm U.N.O.

ELEMENT	CHARACTERISTIC CONCRETE STRENGTH(f'c) AT 28 DAYS	COVER	SPECIAL REQUIREMENTS	COLOUR
REFUGE ISLAND INFILL	S 25 (U.N.O.)	AS DETAILED	BROOM FINISH	TERRACOTTA OXIDE
KERB	S 25 (U.N.O.)	REQ NOT REQUIRED	SMOOTH TROWEL	PLAIN CONCRETE
FOOTPATH	S 25 (U.N.O.)	REQ NOT REQUIRED	BROOM FINISH	PLAIN CONCRETE
KERB RAMPS	S 25 (U.N.O.)	REQ NOT REQUIRED	BROOM FINISH	PLAIN CONCRETE

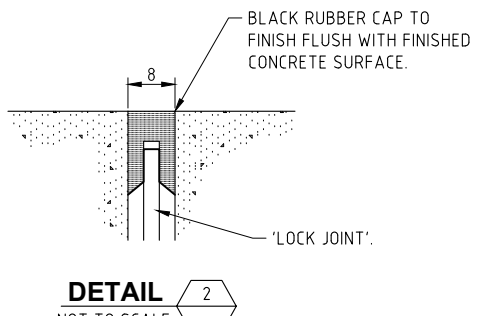
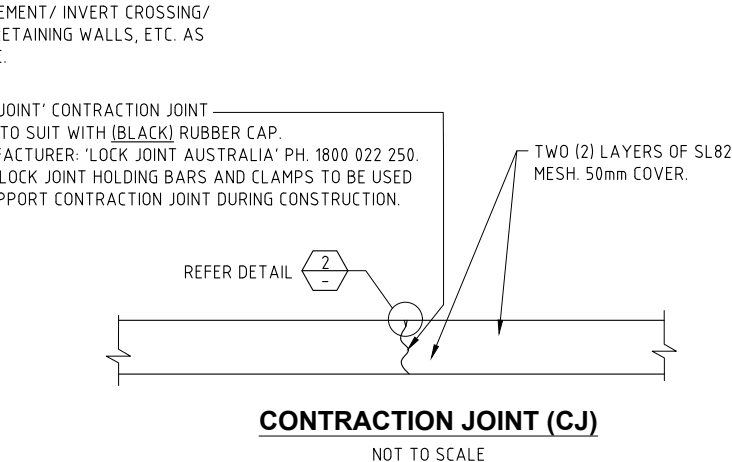
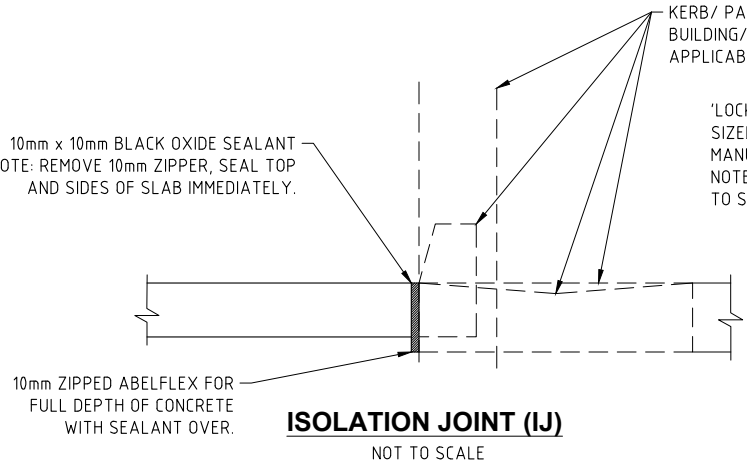
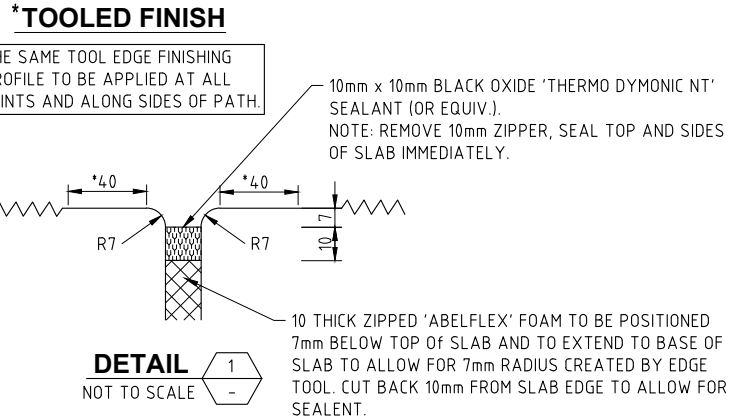
- VERIFY STRENGTH BY PRODUCTION CONTROL TESTING TO AS 1379.
- NO UNSPECIFIED HOLES, PIPES, CONDUITS OR CHASES ARE PERMITTED WITHOUT WRITTEN APPROVAL FROM CONSTRUCTION ENGINEER.
- STRUCTURAL DIMENSIONS DO NOT INCLUDE TOPPINGS OR FINISHES.
- FORM CONSTRUCTION JOINTS ONLY AT LOCATIONS SHOWN ON DRAWINGS. DO NOT VARY WITHOUT WRITTEN APPROVAL FROM SUPERVISING ENGINEER.
- PREPARE COLD JOINTS BY LIGHT SCABBLING, REMOVAL OF DEBRIS & WASHING WITH CLEAN WATER.
- FOUNDATION MATERIALS MUST BE CAPABLE OF WITHSTANDING A SAFE BEARING PRESSURE OF 100kPa. VERIFY & RECORD THE BEARING CAPACITY BEFORE ANY CONCRETE IS PLACED.
- FOR RAISED PEDESTRIAN CROSSING FOUNDATION, REMOVE ASPHALT, TRIM AND COMPACT.
- BLISTER ISLANDS TO BE CONSTRUCTED ON TOP OF RAISED PEDESTRIAN CROSSING RAMP AND ASPHALT PAVEMENT AND ATTACHED WITH MEGAPOXY H.
- DO NOT PLACE CONCRETE UNTIL REINFORCEMENT (IF USED) & FORMWORK ARE INSPECTED BY SUPERVISING ENGINEER.
- THOROUGHLY CLEAN OUT ALL FORMWORK PRIOR TO POURING.
- DO NOT PLACE CONCRETE UNDER THE FOLLOWING CONDITIONS:
 a) WHEN THE SURROUNDING OUTDOOR TEMPERATURE EXCEEDS 30°C.
 b) WHEN THE SURROUNDING WIND SPEED EXCEEDS 22km/h.
 c) RAIN
- DO NOT PLACE CONCRETE WHEN THE CONCRETE TEMPERATURE AT THE TIME OF DELIVERY EXCEEDS 35°C.
- IMPLEMENT THE FOLLOWING PROCEDURES TO MITIGATE PREMATURE DRYING & CRACKING OF THE CONCRETE:
 a) IN HOT CONDITIONS, PROGRAM CONCRETE PLACEMENT FOR THE COOLER PART OF THE DAY (ie. EARLY MORNING).
 b) SPRAY EVAPORATIVE RETARDERS WITH FUGATIVE DYES (eg. ALIPHATIC ALCOHOL) OVER THE SURFACE IMMEDIATELY AFTER SCREEDING & WHILST BLEED WATER IS STILL PRESENT. REAPPLY IF THE SURFACE IS DISTURBED.
 c) COMMENCE CURING IMMEDIATELY AFTER FINISHING. CURE FOR 7 DAYS.
- VIBRATE CONCRETE DURING PLACEMENT TO GIVE MAXIMUM COMPACTION WITHOUT SEGREGATION.
- SURFACE FINISH - REFER TO NOTE 2 ABOVE & DRAWINGS FOR DETAILS.
- EXPANSION JOINTS & ISOLATION JOINTS ARE TO BE SEALED TO MANUFACTURER'S SPECIFICATIONS WITH A GUN GRADE POLYURETHANE LOW MODULUS SELF PRIMING SEALANT EQUAL TO 'TREMCO DYMONIC NT' (+100%, -50% MOVEMENT CAPACITY). SEALANT COLOUR AS SPECIFIED IN SHEET 3.

KERB RAMP & FOOTPATH NOTES:

- CONCRETE TO BE MINIMUM GRADE N25.
- ALL CONCRETE TO BE TRANSVERSE HEAVY BROOM FINISHED. USE A STANDARD EDGING TOOL TO PENCIL ROUND THE EDGE INCLUDING CONTROL & EXPANSION JOINTS WITH SMOOTH BORDER APPROXIMATELY 50mm WIDE.
- THE RAMP GRADIENT IS TO BE NO STEEPER THAN 1 IN 8.
- ALL CONSTRUCTION TO COMPLY WITH THE REQUIREMENTS OF AS3600, CONCRETE CODE.
- FOUNDATION MATERIALS MUST BE CAPABLE OF WITHSTANDING A SAFE BEARING PRESSURE OF 100kPa. VERIFY & RECORD THE BEARING CAPACITY BEFORE ANY CONCRETE IS PLACED.
- DIMENSIONS ARE IN METRES UNLESS SHOWN OTHERWISE.



- DOWEL NOTES**
- GREASE DOWEL IN SECOND POUR.
 - ENSURE DOWELS ARE STRAIGHT PERPENDICULAR TO JOINT AND CAPPED.
 - DO NOT DISPLACE DURING POUR.

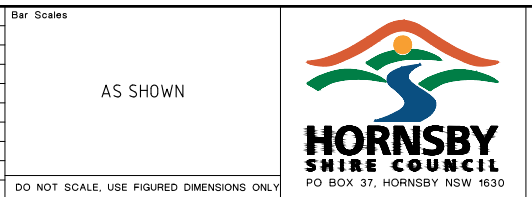


Hornsby Shire Council Design & Construction Branch

TELEPHONE: (02) 9647 6666
 EMAIL: hsc@hornsby.nsw.gov.au
 Authorised for release - Manager Design & Construction
 Name: R. RAJCA Signed: Date:

Designer X. ZHENG	Design Checked-Design Team Leader		
Drawn X. ZHENG	Signed:		
Surveyor J. HART	NA Field Book	NA Level Book	AHD Datum
Project Identifier\\CAD File Name H:\Yallambee Rd_TR_100950\Design\ACAD\Yallambee.dwg			
1	ISSUED FOR CONSTRUCTION		M. DRAKE
Issue	Description	Name	Initial Date
Design not to be amended without authorisation by Manager Design & Construction			

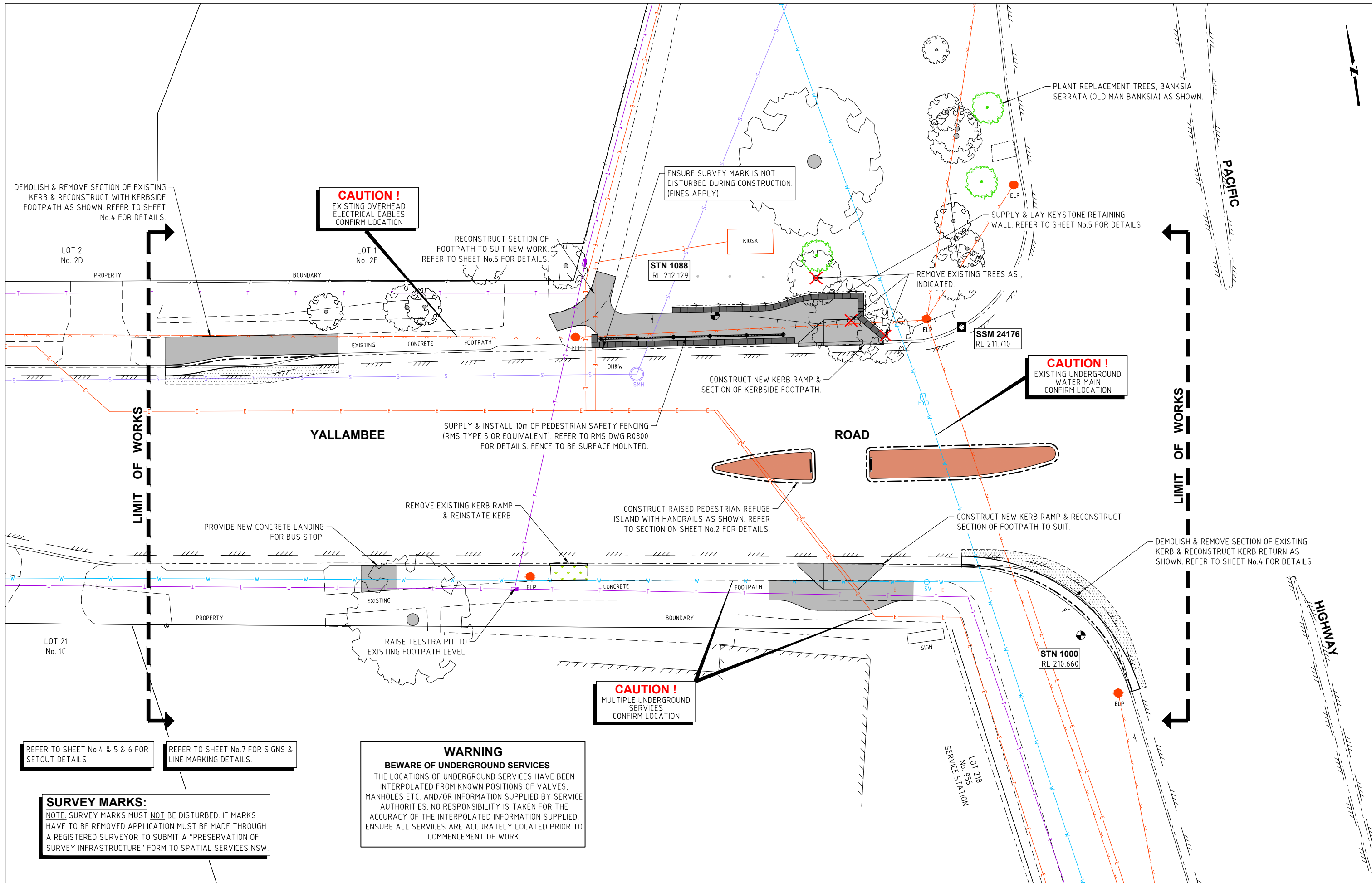
Bar Scales			
AS SHOWN			
DO NOT SCALE, USE FIGURED DIMENSIONS ONLY			



YALLAMBEE ROAD, BEROWRA PROPOSED PEDESTRIAN REFUGE ISLANDS

CONCRETE NOTES, PAVEMENT DETAIL, JOINT DETAILS & TYPICAL SECTION OF REFUGE ISLAND

Project Number 100950	Sheet of 2 7	Issue 1
HSC Drawing Number 411.7		



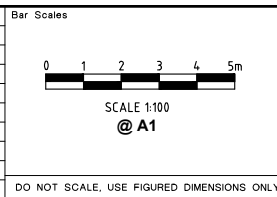
**Hornsby Shire Council
Design & Construction
Branch**

TELEPHONE: (02) 9847 6666
EMAIL: hsc@hornsby.nsw.gov.au
Authorised for release - Manager Design & Construction
Name: R. RAJCA Signed: Date:

Designer X. ZHENG Signed:	Design Checked-Design Team Leader Signed:			
Drawn X. ZHENG Signed:				
Surveyor J. HART	NA Field Book	NA Level Book	AHD Datum	
Project Identifier\VCAD File Name H:\Yallambee Rd_TR_100950\Design\ACAD\Yallambee.dwg				
TRIM Document Number D08433686				

Issue	Description	Name	Initial	Date
1	ISSUED FOR CONSTRUCTION	M. DRAKE		

Design not to be amended without authorisation by Manager Design & Construction



**YALLAMBEE ROAD, BEROWRA
PROPOSED PEDESTRIAN REFUGE ISLANDS**

GENERAL WORKS & SERVICES PLAN

Project Number 100950	Sheet 3	of 7	Issue 1
HSC Drawing Number 411.7			

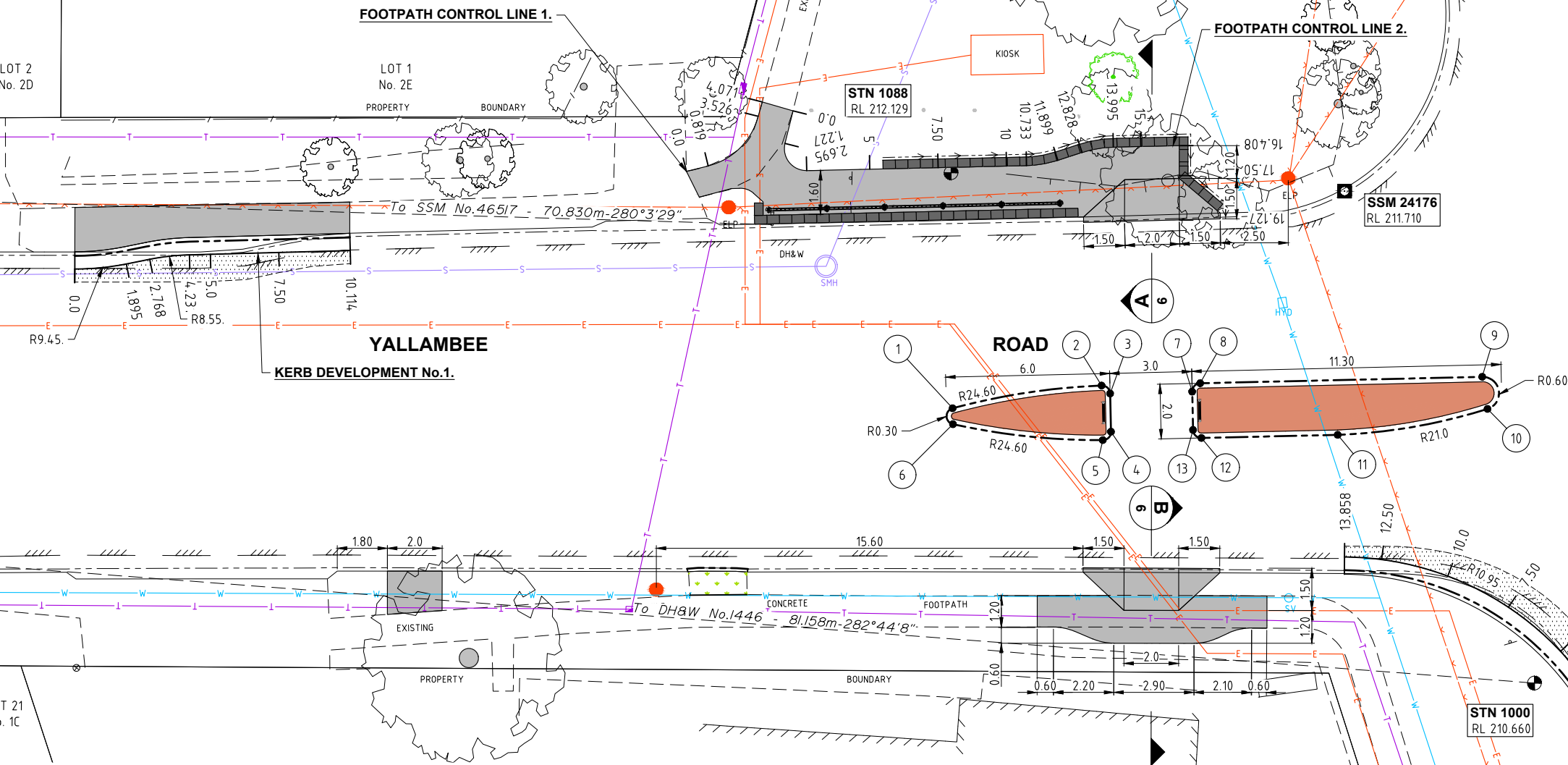
SURVEY STATIONS & REFERENCE MARKS TABLE				
POINT #	EASTING	NORTHING	LEVEL	DESCRIPTION
89750	328182.259	6277562.645		DRILL HOLE & WING IN KERB
1000	328207.387	6277541.997	210.660	NAIL
1088	328189.007	6277563.563	212.129	NAIL
24176	328203.143	6277560.799	211.710	STATE SURVEY MARK IN KERB
1446	328128.226	6277559.889	209.154	DRILL HOLE & WING IN KERB
46517	328112.517	6277575.016	209.304	STATE SURVEY MARK IN KERB

KERB RETURN No.1 SETOUT DETAILS				
CHAINAGE	EASTING	NORTHING	LIP LEVEL	RAD/SPIRAL
0.000	328210.337	6277538.402	210.158	-10.950
2.500	328209.681	6277540.809	210.320	-10.950
5.000	328208.498	6277543.005	210.518	-10.950
7.500	328206.849	6277544.877	210.718	-10.950
10.000	328204.819	6277546.326	210.917	-10.950
12.500	328202.513	6277547.279	211.061	-10.950
13.858	328201.187	6277547.569	211.096	

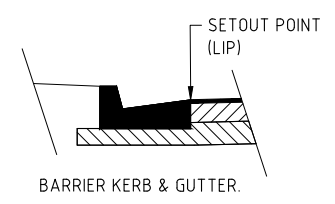
KERB DEVELOPMENT No.1 SETOUT DETAILS				
CHAINAGE	EASTING	NORTHING	LIP LEVEL	RAD/SPIRAL
0.000	328156.796	6277564.766	210.399	-9.450
1.895	328158.685	6277564.673	210.498	
2.500	328159.289	6277564.704	210.526	
2.768	328159.557	6277564.717	210.538	8.550
4.231	328161.017	6277564.666	210.602	
5.000	328161.781	6277564.574	210.635	
7.500	328164.263	6277564.274	210.744	
10.000	328166.745	6277563.974	210.854	
10.114	328166.858	6277563.960	210.859	

FOOTPATH CONTROL LINE 1 SETOUT DETAILS				
CHAINAGE	EASTING	NORTHING	LEVEL	RAD/SPIRAL
0.000	328179.442	6277565.030	211.717	
0.819	328180.257	6277565.107	211.801	-2.500
2.500	328181.756	6277565.795	212.111	-2.500
3.526	328182.331	6277566.636	212.316	
11.064	328185.225	6277573.596	212.425	

FOOTPATH CONTROL LINE 2 SETOUT DETAILS				
CHAINAGE	EASTING	NORTHING	LEVEL	RAD/SPIRAL
0.000	328183.620	6277566.646	212.386	
1.227	328183.156	6277565.510	212.143	-0.800
2.500	328183.609	6277564.461	212.015	-0.800
2.695	328183.798	6277564.413	212.012	
5.000	328186.085	6277564.128	211.983	
7.500	328188.566	6277563.819	211.902	
10.000	328191.047	6277563.510	211.814	
10.733	328191.773	6277563.419	211.788	-4.000
11.899	328192.936	6277563.445	211.746	
12.500	328193.528	6277563.545	211.725	
12.828	328193.852	6277563.600	211.713	4.000
13.995	328195.014	6277563.625	211.711	
15.000	328196.011	6277563.501	211.711	
16.408	328197.409	6277563.327	211.711	
17.500	328197.248	6277562.247	211.684	
19.127	328197.008	6277560.637	211.491	



MEDIAN ISLAND SETOUT DETAILS			
PONIT No.	EASTING	NORTHING	REMARKS
1	328187.805	6277555.042	TP R0.3/R24.60
2	328193.317	6277555.066	TP R24.60/R0.30
3	328193.583	6277554.731	TP R0.30
4	328193.410	6277553.348	TP R0.30
5	328193.071	6277553.088	TP R0.3/R24.60
6	328187.733	6277554.464	TP R24.60/R0.30
7	328196.561	6277554.363	TP R0.30
8	328196.896	6277554.623	TP R0.30
9	328207.132	6277553.348	TP R0.60
10	328207.151	6277552.160	TP R0.60/R21.0
11	328201.595	6277552.022	TP R21.0
12	328196.648	6277552.639	TP R0.30
13	328196.388	6277552.974	TP R0.30



KERB SETOUT DETAILS
N.T.S

SURVEY CONTROL	
SURVEY STATION AND/OR CONTROL LINE DETAILS CHECKED AND VERIFIED	
Signed: _____	Date: _____
Project Number 100950	
Sheet of 4 7	Issue 1
HSC Drawing Number 411.7	

Hornsby Shire Council
Design & Construction
Branch

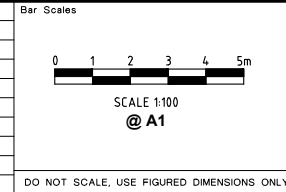
TELEPHONE: (02) 9847 6666
EMAIL: hsc@hornsby.nsw.gov.au

Authorised for release - Manager Design & Construction
Name: R. RAJCA Signed: _____ Date: _____

Designer X. ZHENG	Design Checked-Design Team Leader Signed: _____
Drawn X. ZHENG	Drawing Checked Signed: _____
Surveyor J. HART	NA Field Book
	NA Level Book
	AHD Datum
Project Identifier-VCAD File Name H:\Yallambee Rd_TR_100950\Design\ACAD\Yallambee.dwg	
TRIM Document Number D08433686	

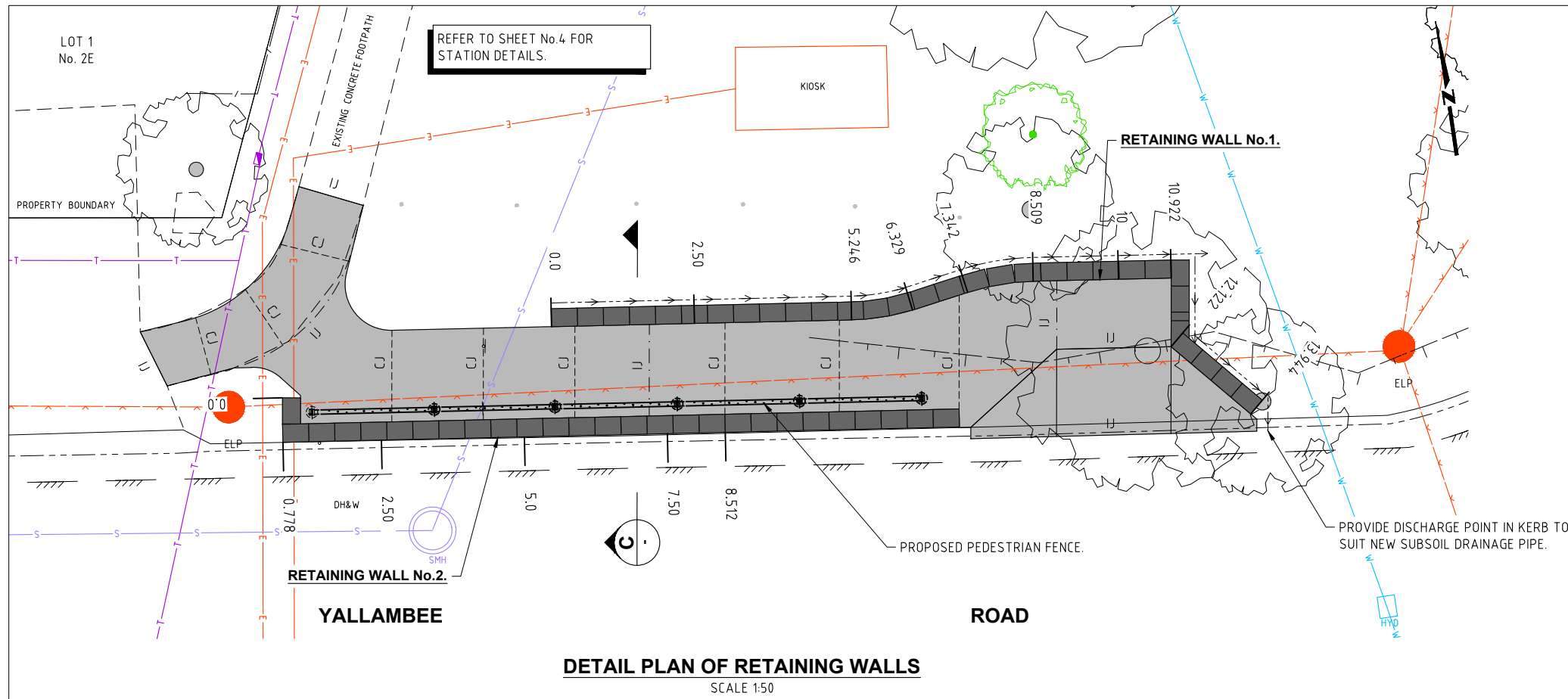
1	ISSUED FOR CONSTRUCTION	M. DRAKE		
Issue	Description	Name	Initial	Date

Design not to be amended without authorisation by Manager Design & Construction



YALLAMBEE ROAD, BEROWRA
PROPOSED PEDESTRIAN REFUGE ISLANDS

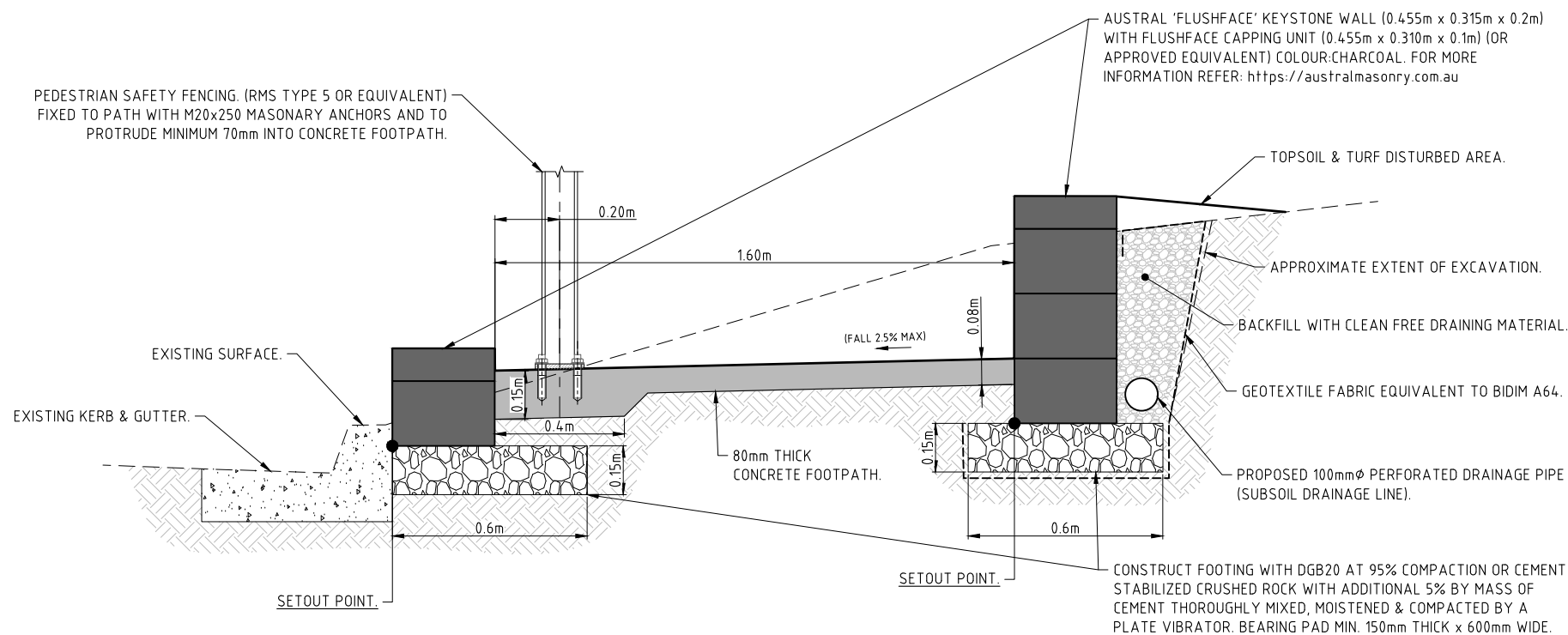
SETOUT DETAILS



DETAIL PLAN OF RETAINING WALLS
SCALE 1:50

RETAINING WALL No.1 SETOUT DETAILS			
CHAINAGE	EASTING	NORTHING	RAD/SPIRAL
0.000	328186.567	6277564.068	
2.500	328189.048	6277563.759	
5.000	328191.529	6277563.450	
5.246	328191.773	6277563.419	-4.000
6.329	328192.853	6277563.432	
7.342	328193.852	6277563.600	4.000
7.500	328194.008	6277563.623	4.000
8.509	328195.014	6277563.625	
10.000	328196.494	6277563.441	
10.922	328197.409	6277563.327	
12.122	328197.232	6277562.139	
12.500	328197.481	6277561.856	
14.084	328198.529	6277560.668	

RETAINING WALL No.2 SETOUT DETAILS			
CHAINAGE	EASTING	NORTHING	RAD/SPIRAL
0.000	328181.723	6277563.526	
0.778	328181.627	6277562.754	
2.500	328183.336	6277562.541	
5.000	328185.816	6277562.232	
7.500	328188.297	6277561.923	
10.000	328190.778	6277561.614	
12.500	328193.259	6277561.304	
12.608	328193.366	6277561.291	



SECTION C
SCALE 1:10

**Hornsby Shire Council
Design & Construction
Branch**

Designer X. ZHENG	Design Checked-Design Team Leader		
Drawn X. ZHENG	Signed:		
Surveyor J. HART	NA	NA	AHD
Project Identifier\ACAD File Name H:\Yallambee Rd_TR_100950\Design\ACAD\Yallambee.dwg	Field Book	Level Book	Datum
TRIM Document Number D08433686	1		

1	ISSUED FOR CONSTRUCTION	M. DRAKE		
Issue	Description	Name	Initial	Date
Design not to be amended without authorisation by Manager Design & Construction				

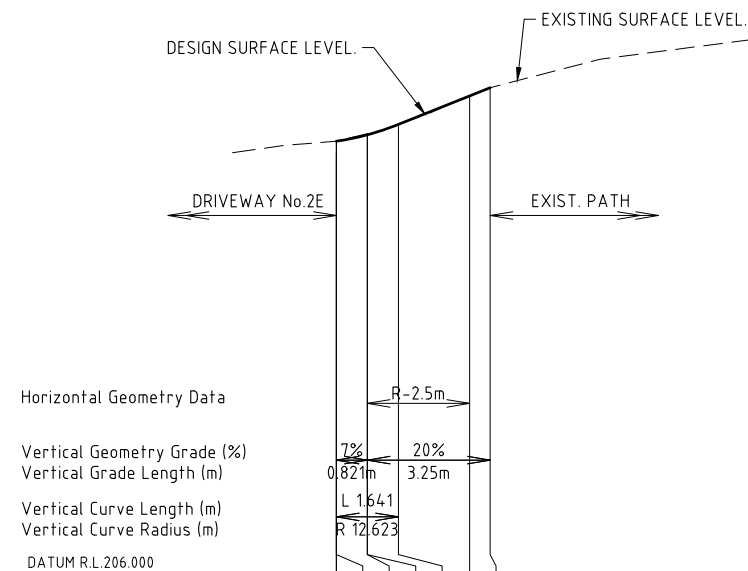
Bar Scales
AS SHOWN
DO NOT SCALE, USE FIGURED DIMENSIONS ONLY



**YALLAMBEE ROAD, BEROWRA
PROPOSED PEDESTRIAN REFUGE ISLANDS**

RETAINING WALL SETOUT DETAILS

Project Number 100950	Sheet 5	of 7	Issue 1
HSC Drawing Number 411.7			



Horizontal Geometry Data

Vertical Geometry Grade (%)
Vertical Grade Length (m)

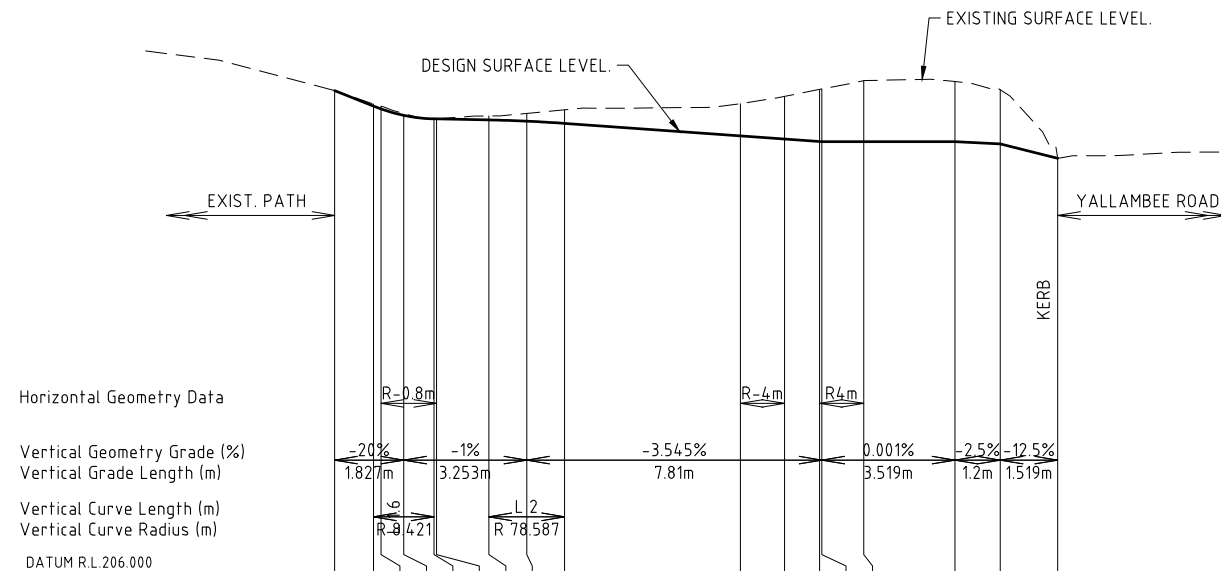
Vertical Curve Length (m)
Vertical Curve Radius (m)

DATUM R.L. 206.000

CUT / FILL DEPTH TO EXISTING	CONTROL LINE FINISHED LEVEL	EXISTING SURFACE LEVEL	CONTROL LINE CHAINAGE
-0.000	211.717	211.717	-0
0.000	211.717	211.717	0
0.014	211.801	211.815	0.819
0.014	211.801	211.816	0.821
-0.007	211.939	211.932	1.641
-0.009	212.316	212.307	3.526
0.000	212.425	212.425	4.071

LONGITUDINAL SECTION - FOOTPATH CONTROL LINE 1

SCALE 1:100 HOR
1:50 VERT



Horizontal Geometry Data

Vertical Geometry Grade (%)
Vertical Grade Length (m)

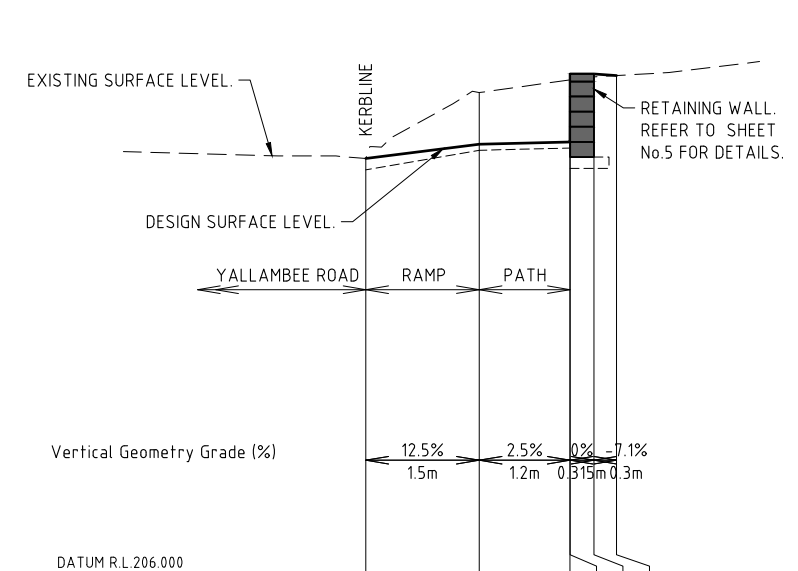
Vertical Curve Length (m)
Vertical Curve Radius (m)

DATUM R.L. 206.000

CUT / FILL DEPTH TO EXISTING	CONTROL LINE FINISHED LEVEL	EXISTING SURFACE LEVEL	CONTROL LINE CHAINAGE
0.000	212.386	212.386	0
0.028	212.180	212.208	1.027
0.037	212.143	212.180	1.227
0.013	212.058	212.071	1.827
-0.002	212.012	212.011	2.627
0.001	212.012	212.013	2.695
0.053	211.998	212.051	4.08
0.103	211.982	212.085	5.08
0.180	211.952	212.132	6.08
0.425	211.788	212.213	10.733
0.563	211.746	212.310	11.899
0.689	211.713	212.402	12.828
0.697	211.711	212.408	12.89
0.805	211.711	212.517	13.995
0.795	211.711	212.506	16.408
0.714	211.681	212.395	17.609
0.000	211.491	211.491	19.127

LONGITUDINAL SECTION - FOOTPATH CONTROL LINE 2

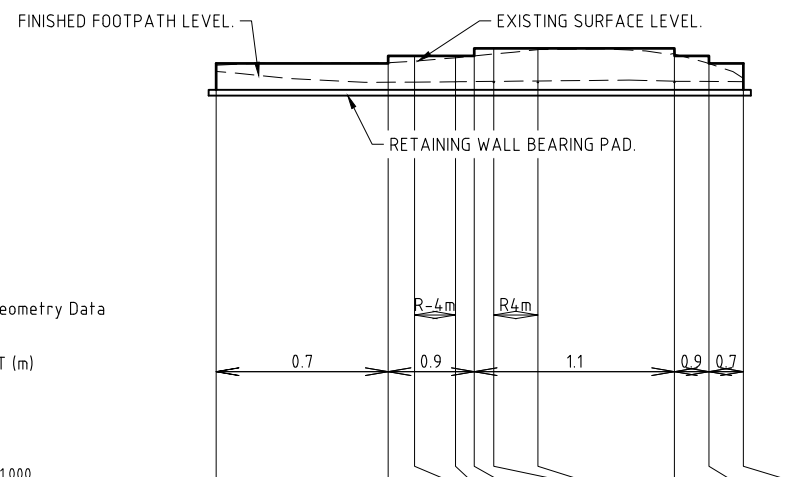
SCALE 1:100 HOR
1:50 VERT



DATUM R.L. 206.000

CUT / FILL DEPTH TO EXISTING	CONTROL LINE FINISHED LEVEL	EXISTING SURFACE LEVEL	CONTROL LINE CHAINAGE
0.000	211.490	211.490	0
0.683	211.678	212.362	1.5
0.821	211.708	212.529	2.7
-0.079	212.608	212.530	2.701
-0.038	212.608	212.570	3.016
-0.000	212.587	212.587	3.316

SECTION A
SCALE 1:50



Horizontal Geometry Data

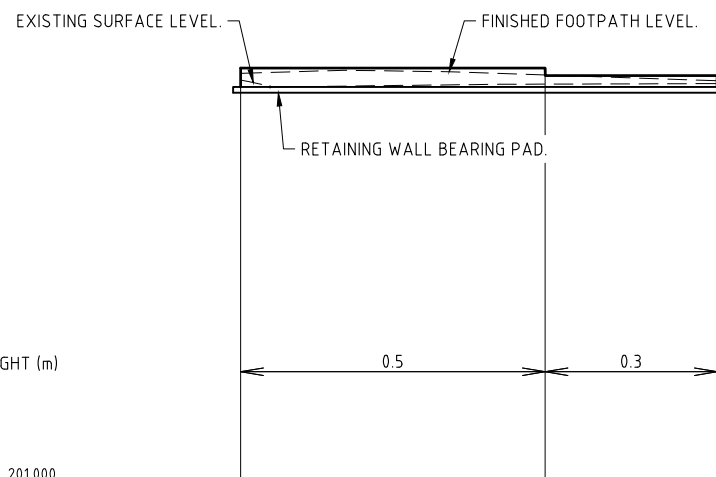
WALL HEIGHT (m)

DATUM R.L. 201.000

EXISTING SURFACE LEVEL	TOP OF RETAINING WALL LEVEL	TOP OF FOOTING LEVEL	CONTROL LINE CHAINAGE
212.104	212.152	211.452	0
212.169	212.152	211.452	4.55
212.213	212.352	211.452	5.246
212.301	212.352	211.452	6.329
212.351	212.352	211.452	6.826
212.402	212.552	211.452	7.342
212.517	212.552	211.452	8.509
212.395	212.552	211.452	12.122
212.149	212.352	211.452	13.033
211.758	212.152	211.452	13.944

LONGITUDINAL SECTION - RETAINING WALL No.1

SCALE 1:100 HOR
1:100 VERT



Horizontal Geometry Data

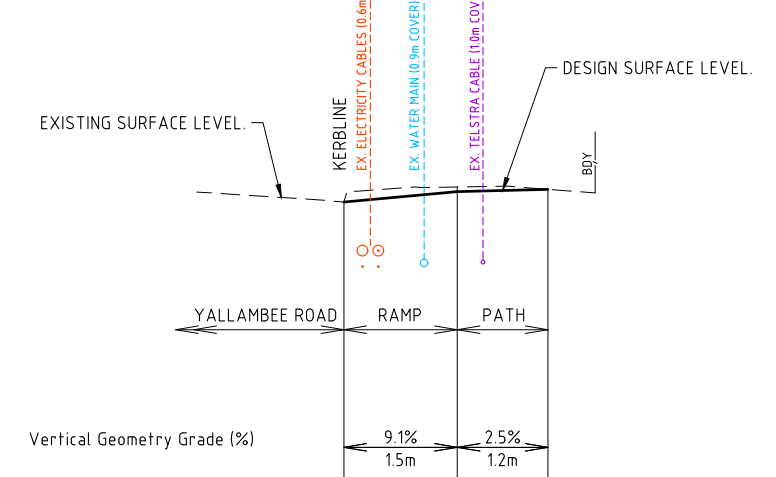
WALL HEIGHT (m)

DATUM R.L. 201.000

EXISTING SURFACE LEVEL	TOP OF RETAINING WALL LEVEL	TOP OF FOOTING LEVEL	CONTROL LINE CHAINAGE
211.710	212.029	211.529	0
211.604	212.029	211.529	8.058
211.619	211.829	211.529	12.608

LONGITUDINAL SECTION - RETAINING WALL No.2

SCALE 1:100 HOR
1:100 VERT



DATUM R.L. 207.000

CONTROL LINE FINISHED LEVEL	EXISTING SURFACE LEVEL	CONTROL LINE CHAINAGE
211.244	211.244	0
211.381	211.442	1.5
211.411	211.411	2.7

SECTION B
SCALE 1:100

**Hornsby Shire Council
Design & Construction
Branch**

TELEPHONE: (02) 9847 6666
EMAIL: hsc@hornsby.nsw.gov.au
Authorised for release - Manager Design & Construction
Name: R. RAJCA Signed: Date:

Designer X. ZHENG	Design Checked-Design Team Leader		
Drawn X. ZHENG	Signed:		
Surveyor J. HART	NA Field Book	NA Level Book	AHD Datum
Project Identifier\VCAD File Name H:\Yallambee Rd_TR_100950\Design\ACAD\Yallambee.dwg			
TRIM Document Number D08433686			

1	ISSUED FOR CONSTRUCTION	M. DRAKE		
Issue	Description	Name	Initial	Date
Design not to be amended without authorisation by Manager Design & Construction				

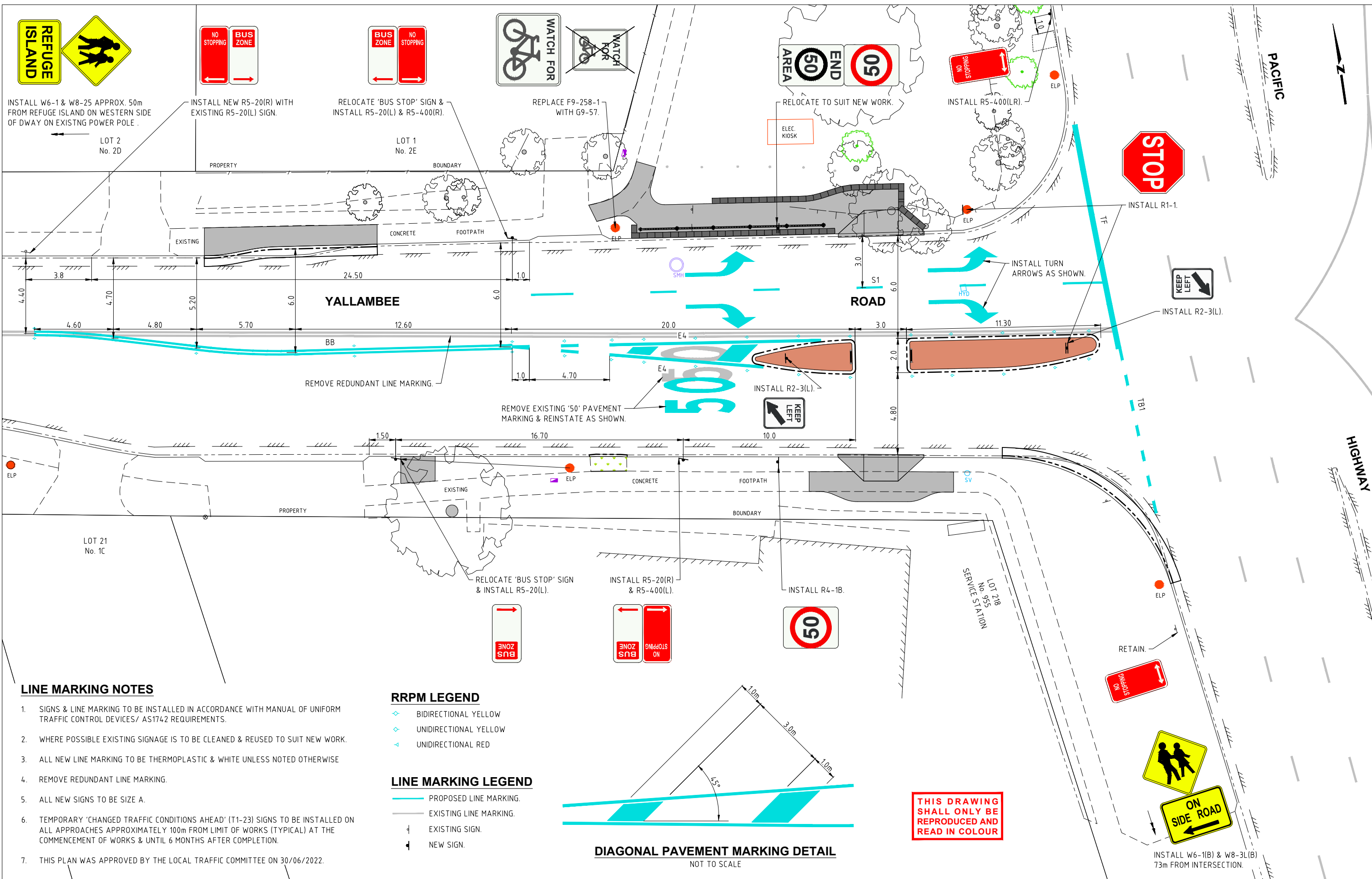
Bar Scales
AS SHOWN
DO NOT SCALE, USE FIGURED DIMENSIONS ONLY



**YALLAMBEE ROAD, BEROWRA
PROPOSED PEDESTRIAN REFUGE ISLANDS**

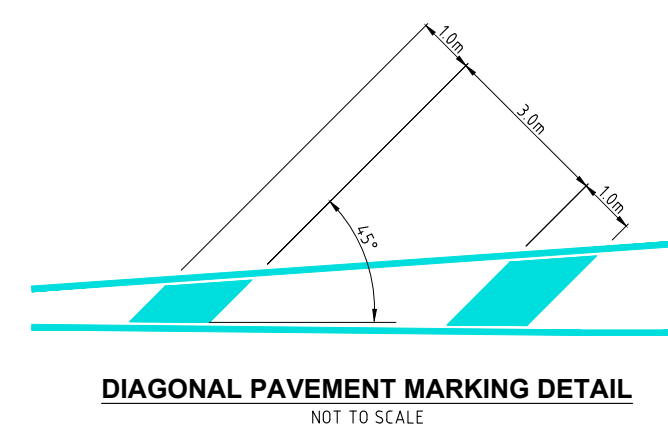
FOOTPATH & RETAINING WALL LONG SECTIONS & KERB RAMP SECTIONS

Project Number 100950	Sheet of 6 7	Issue 1
HSC Drawing Number 411.7		



- LINE MARKING NOTES**
- SIGNS & LINE MARKING TO BE INSTALLED IN ACCORDANCE WITH MANUAL OF UNIFORM TRAFFIC CONTROL DEVICES/ AS1742 REQUIREMENTS.
 - WHERE POSSIBLE EXISTING SIGNAGE IS TO BE CLEANED & REUSED TO SUIT NEW WORK.
 - ALL NEW LINE MARKING TO BE THERMOPLASTIC & WHITE UNLESS NOTED OTHERWISE
 - REMOVE REDUNDANT LINE MARKING.
 - ALL NEW SIGNS TO BE SIZE A.
 - TEMPORARY 'CHANGED TRAFFIC CONDITIONS AHEAD' (T1-23) SIGNS TO BE INSTALLED ON ALL APPROACHES APPROXIMATELY 100m FROM LIMIT OF WORKS (TYPICAL) AT THE COMMENCEMENT OF WORKS & UNTIL 6 MONTHS AFTER COMPLETION.
 - THIS PLAN WAS APPROVED BY THE LOCAL TRAFFIC COMMITTEE ON 30/06/2022.

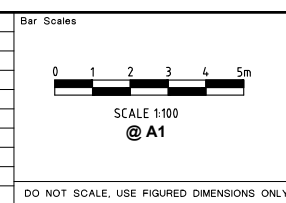
- RRPM LEGEND**
- BIDIRECTIONAL YELLOW
 - UNIDIRECTIONAL YELLOW
 - UNIDIRECTIONAL RED
- LINE MARKING LEGEND**
- PROPOSED LINE MARKING.
 - EXISTING LINE MARKING.
 - EXISTING SIGN.
 - NEW SIGN.



THIS DRAWING SHALL ONLY BE REPRODUCED AND READ IN COLOUR

**Hornsby Shire Council
Design & Construction
Branch**
TELEPHONE: (02) 9847 6666
EMAIL: hsc@hornsby.nsw.gov.au

Designer X. ZHENG	Design Checked-Design Team Leader		
Drawn X. ZHENG	Signed:		
Surveyor J. HART	NA	NA	AHD
Field Book	Level Book	Datum	
Project Identifier\ACAD File Name H:\Yallambee Rd_TR_100950\Design\ACAD\Yallambee.dwg			
TRIM Document Number D08433686			
1	ISSUED FOR CONSTRUCTION	M. DRAKE	
Issue	Description	Name	Initial Date
Design not to be amended without authorisation by Manager Design & Construction			



**YALLAMBEE ROAD, BEROWRA
PROPOSED PEDESTRIAN REFUGE ISLANDS**

SIGNS & LINEMARKING PLAN

Project Number 100950	Issue 1
Sheet of 7 7	
HSC Drawing Number 411.7	