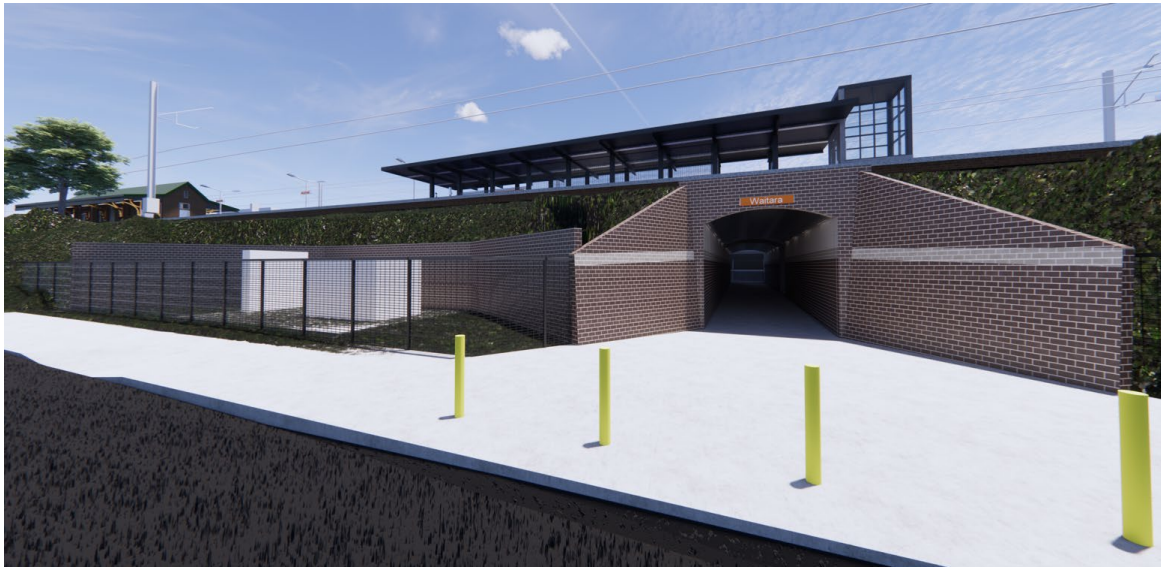


Transport Access Program

Waitara Station Upgrade

Project update – May/June 2022



Artist's impression of the proposed new Alexandria Parade entrance, indicative only and subject to detailed design

The NSW Government is improving accessibility at Waitara Station

The Waitara Station Upgrade will be delivered as part of the [Transport Access Program](#), an initiative to provide a better experience for public transport customers by delivering modern, safe and accessible infrastructure, especially for people with a disability or limited mobility, parents/carers with prams and customers with luggage.

Planning approval received

The Waitara Station Upgrade project has been approved and construction will soon commence.

The approval follows the public display of the Review of Environmental Factors (REF) from Monday 28 March to Monday 11 April 2022 and preparation of a Determination Report.

The project team received 16 submissions during the public display period. All submissions were considered as part of the planning process and are individually addressed in the Determination Report.

Key issues raised in submissions include:

- support for improving accessibility at Waitara Station
- requests to reconsider the location of the pedestrian crossing on Alexandria Parade
- requests to provide a lift within the existing underpass (at southern end of station)
- requests for additional landscaping to be provided around Waitara Station.

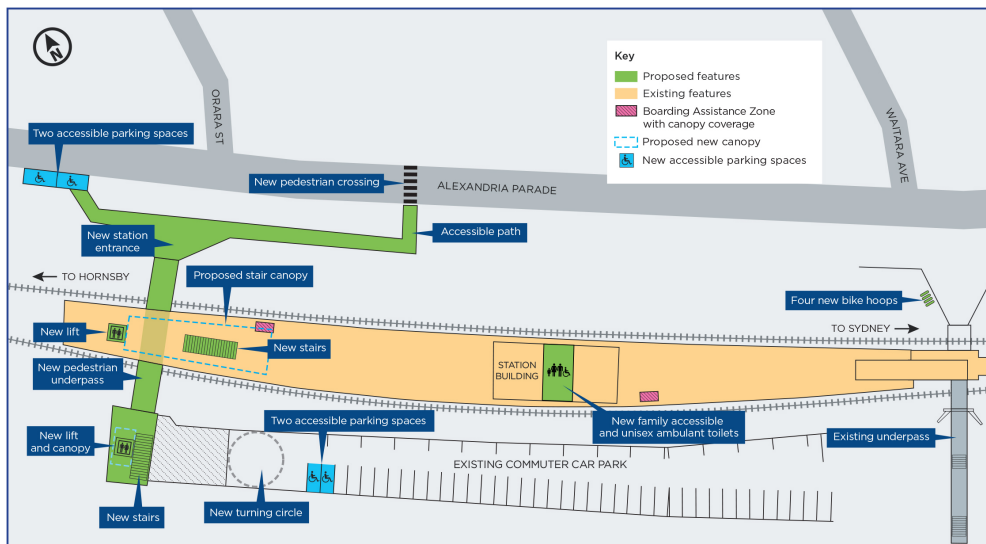
Transport for NSW (Transport) would like to thank the community for their feedback during the submission period.

The Determination Report and associated conditions of approval can be viewed on the Transport website: www.transport.nsw.gov.au/waitara

Key features of the proposed upgrade

- new station entrances at the northern end of the station leading in from Alexandria Parade and from the commuter car park on Waitara Avenue
- a new pedestrian underpass at the northern end of the station
- two new lifts at the new northern station entrance, one down to underpass from Waitara Avenue car park and one up to the station platform from underpass
- new staircases down to new underpass from the car park and up to the platform
- two new boarding assistance zones on the platform
- new overhead canopy coverage over lift and stairs on platform
- re-surfacing the platform
- new accessible and family-friendly toilets in the station building on platform
- a new accessible footpath connecting new underpass to a new pedestrian crossing on Alexandria Parade
- a new bike parking rack on Alexandria Parade
- four new accessible parking spaces, two on each side of the station
- a formal kiss and ride bay
- additional CCTV and upgraded lighting.

The existing station underpass will be retained and will remain open throughout construction.



Key features of the proposed upgrade, subject to detailed design.

Start of construction – site establishment and investigations

From **Monday 23 May** we will start to establish the construction site and carry out further investigations. This work will include:

- installing a temporary construction site compound (within an existing compound area next to 4 Romsey Street) including the delivery of site sheds and minor kerb demolition
- installing an additional temporary compound establishment on Alexandria Parade where the new underpass will be located
- trimming and removing approved vegetation on the existing bank at Alexandria Parade
- connecting temporary electrical and water services
- installing temporary fencing and barriers
- relocating and installing electrical connections on Alexandria Parade.

Equipment for this work include: a mobile crane, drilling, piling and boring rigs, excavators, surveying equipment, concrete pumps, elevated work platforms, hand auger, vacuum, dump and concrete/delivery trucks, mobile lighting towers, power and hand tools.

Night work – Sunday 29 May to Thursday 2 June

- Night work will be carried out from **Sunday 29 May until Thursday 2 June 2022 from 12am to 4am**. This will involve drainage work within the rail corridor and is expected to generate some noise. Equipment includes a small excavator and truck, mobile lighting, power and hand tools.

Weekend work – Saturday 11 to Monday 13 June

For the safety of customers and workers, work will be carried out during a scheduled Sydney Trains trackwork weekend when **trains are not operating, and the station is closed**. Work will be carried out continuously from **2am Saturday 11 June until 2am Monday 13 June 2022**.

The work will involve:

- installing foundations under both tracks
- installing foundations under the island platform
- moving equipment using a mobile crane
- installing temporary hoarding on platform
- relocating electrical services and creating electrical connection to hoarding.

Equipment to be used includes delivery trucks, elevated work platforms, dump trucks, excavators, piling rigs, vacuum trucks, concrete trucks, concrete pumps, mobile lighting towers, power and hand tools.

The equipment will be positioned as far away from residential areas as possible with regular respite periods during noisy work.

Temporary traffic, access and parking changes

During the station upgrade there may be temporary changes to traffic and access surrounding Waitara Station, on Alexandria Parade and in the commuter car park on Waitara Avenue. Single lane road closures and parking removal to accommodate large work vehicles may be required.

Traffic control and signage will be in place to help pedestrians and motorists navigate these changes. We will notify nearby residents and businesses in advance of changes to station access.

Changes to car parking spaces and relocated bike locker

Up to 21 parking spaces will be temporarily unavailable for public use from **Monday 23 May 2022 through to late 2023**. Parking changes are occurring at the following locations:

- four spaces – to create a temporary construction site next to 4 Romsey Street
- seven spaces – to create a three-point turn bay at the western end of Waitara Avenue commuter car park
- 10 spaces – to create a temporary construction site near the new Alexandria Avenue underpass

The bike locker will also be temporarily relocated to the southern end of Waitara Avenue commuter car park from **Monday 23 May 2022**.

We apologise for this inconvenience and thank you for your patience while we carry out this important work.

Construction hours

Standard construction hours include **7am to 6pm Monday to Friday and 8am to 1pm Saturday**.

Contact us

If you have any questions or would like more on the Waitara Station Upgrade project, please contact our project team:



1800 684 490 – for all enquires and complaints

1800 775 465 – 24 hour Construction Response Line



projects@transport.nsw.gov.au



www.transport.nsw.gov.au/waitara - regular project notifications and updates on the project website



PO Box K659, Haymarket NSW 1240



If you need help understanding this information, please contact the Translating and Interpreting Service on **131 450** and ask them to call us on **1800 684 490**