

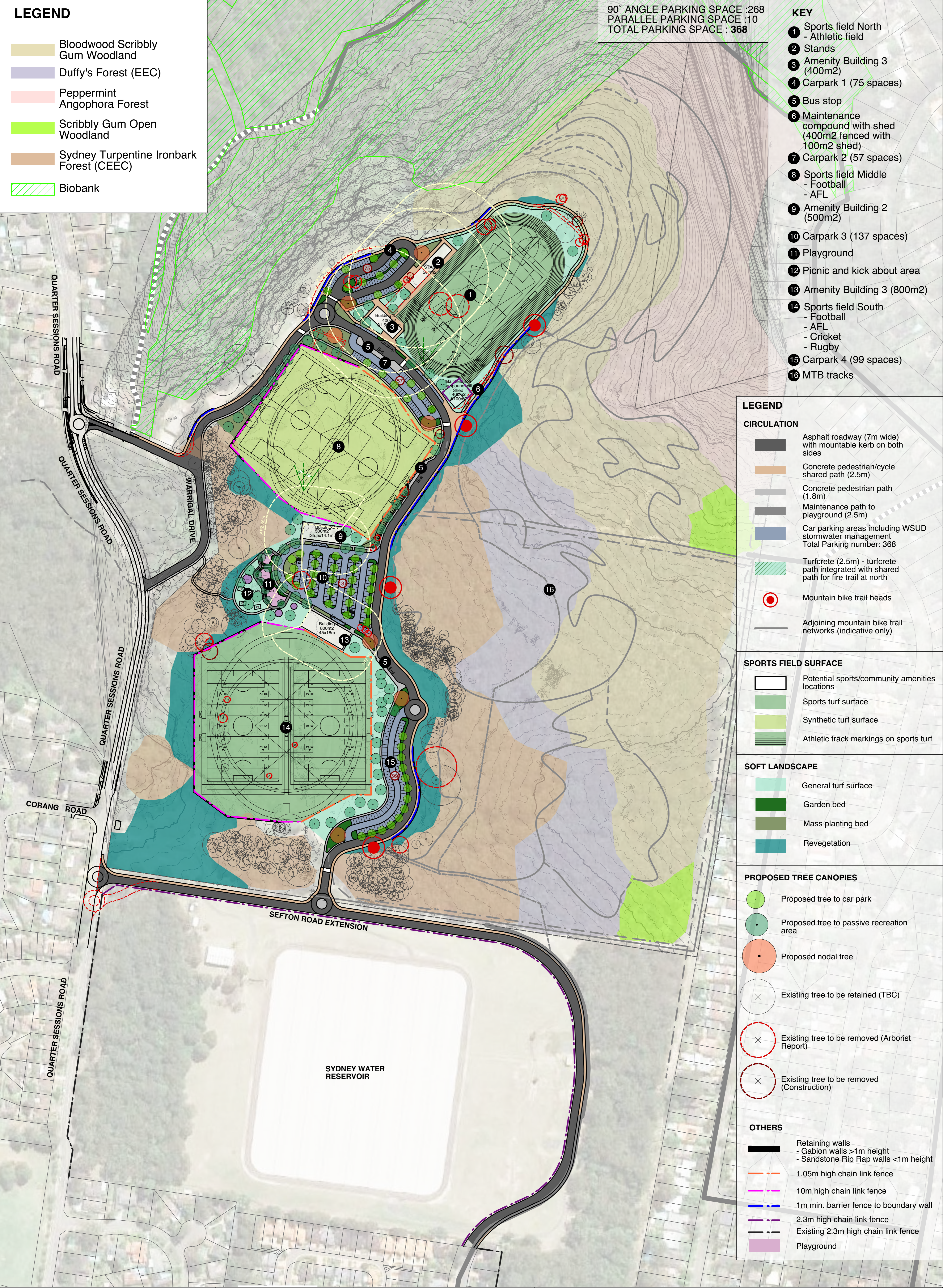
LEGEND

- Bloodwood Scribbly Gum Woodland
- Duffy's Forest (EEC)
- Peppermint Angophora Forest
- Scribbly Gum Open Woodland
- Sydney Turpentine Ironbark Forest (CEEC)
- Biobank

90° ANGLE PARKING SPACE :268
 PARALLEL PARKING SPACE :10
 TOTAL PARKING SPACE : 368

KEY

- 1 Sports field North - Athletic field
- 2 Stands
- 3 Amenity Building 3 (400m2)
- 4 Carpark 1 (75 spaces)
- 5 Bus stop
- 6 Maintenance compound with shed (400m2 fenced with 100m2 shed)
- 7 Carpark 2 (57 spaces)
- 8 Sports field Middle - Football - AFL
- 9 Amenity Building 2 (500m2)
- 10 Carpark 3 (137 spaces)
- 11 Playground
- 12 Picnic and kick about area
- 13 Amenity Building 3 (800m2)
- 14 Sports field South - Football - AFL - Cricket - Rugby
- 15 Carpark 4 (99 spaces)
- 16 MTB tracks



LEGEND

- CIRCULATION**
- Asphalt roadway (7m wide) with mountable kerb on both sides
 - Concrete pedestrian/cycle shared path (2.5m)
 - Concrete pedestrian path (1.8m)
 - Maintenance path to playground (2.5m)
 - Car parking areas including WSUD stormwater management Total Parking number: 368
 - Turfcrete (2.5m) - turfcrete path integrated with shared path for fire trail at north
 - Mountain bike trail heads
 - Adjoining mountain bike trail networks (indicative only)
- SPORTS FIELD SURFACE**
- Potential sports/community amenities locations
 - Sports turf surface
 - Synthetic turf surface
 - Athletic track markings on sports turf
- SOFT LANDSCAPE**
- General turf surface
 - Garden bed
 - Mass planting bed
 - Revegetation
- PROPOSED TREE CANOPIES**
- Proposed tree to car park
 - Proposed tree to passive recreation area
 - Proposed nodal tree
 - Existing tree to be retained (TBC)
 - Existing tree to be removed (Arborist Report)
 - Existing tree to be removed (Construction)
- OTHERS**
- Retaining walls - Gabion walls >1m height - Sandstone Rip Rap walls <1m height
 - 1.05m high chain link fence
 - 10m high chain link fence
 - 1m min. barrier fence to boundary wall
 - 2.3m high chain link fence
 - Existing 2.3m high chain link fence
 - Playground



- PRECINCT 1**
- Sports field north:
 - Athletics field
 - Amenities (Building 3)
 - Stands
 - Car park 1 (77 spaces)
 - Car park 2 (63 spaces)
 - Bus stop
 - Maintenance compound

- PRECINCT 2**
- Sports field middle
 - Football
 - AFL
 - Amenities (Building 2)
 - Carpark 3 (137 parking spaces)
 - Bus stop
 - Playground

- PRECINCT 3**
- Sports field South
 - Football
 - AFL
 - Cricket
 - Rugby
 - Amenities (Building 1)
 - Carpark 4 (99 parking spaces)
 - Bus stop

SYDNEY WATER RESERVOIR



LEGEND	
CIRCULATION	
	Asphalt roadway (7m wide) with mountable kerb on both sides
	Concrete pedestrian/cycle shared path (2.5m)
	Concrete pedestrian path (1.8m)
	Maintenance path to playground (2.5m)
	Car parking areas including WSUD stormwater management Total Parking number: 368
	Turfcrete (2.5m) - turfcrete path integrated with shared path for fire trail at north
	Mountain bike trail heads
	Adjoining mountain bike trail networks (indicative only)
SPORTS FIELD SURFACE	
	Potential sports/community amenities locations
	Sports turf surface
	Synthetic turf surface
	Athletic track markings on sports turf
SOFT LANDSCAPE	
	General turf surface
	Garden bed
	Mass planting bed
	Revegetation
PROPOSED TREE CANOPIES	
	Proposed tree to car park
	Proposed tree to passive recreation area
	Proposed nodal tree
	Existing tree to be retained (TBC)
	Existing tree to be removed (Arborist Report)
	Existing tree to be removed (Construction)
OTHERS	
	Retaining walls - Gabion walls >1m height - Sandstone Rip Rap walls <1m height
	1.05m high chain link fence
	10m high chain link fence
	1m min. barrier fence to boundary wall
	2.3m high chain link fence
	Existing 2.3m high chain link fence
	Playground



SPORTS FIELD SURFACE

	Potential sports/community amenities locations
	Sports turf surface
	Synthetic turf surface
	Athletic track markings on sports turf

SOFT LANDSCAPE

	General turf surface
	Garden bed
	Mass planting bed
	Revegetation

PROPOSED TREE CANOPIES

	Proposed tree to car park
	Proposed tree to passive recreation area
	Proposed nodal tree
	Existing tree to be retained (TBC)
	Existing tree to be removed (Arborist Report)
	Existing tree to be removed (Construction)

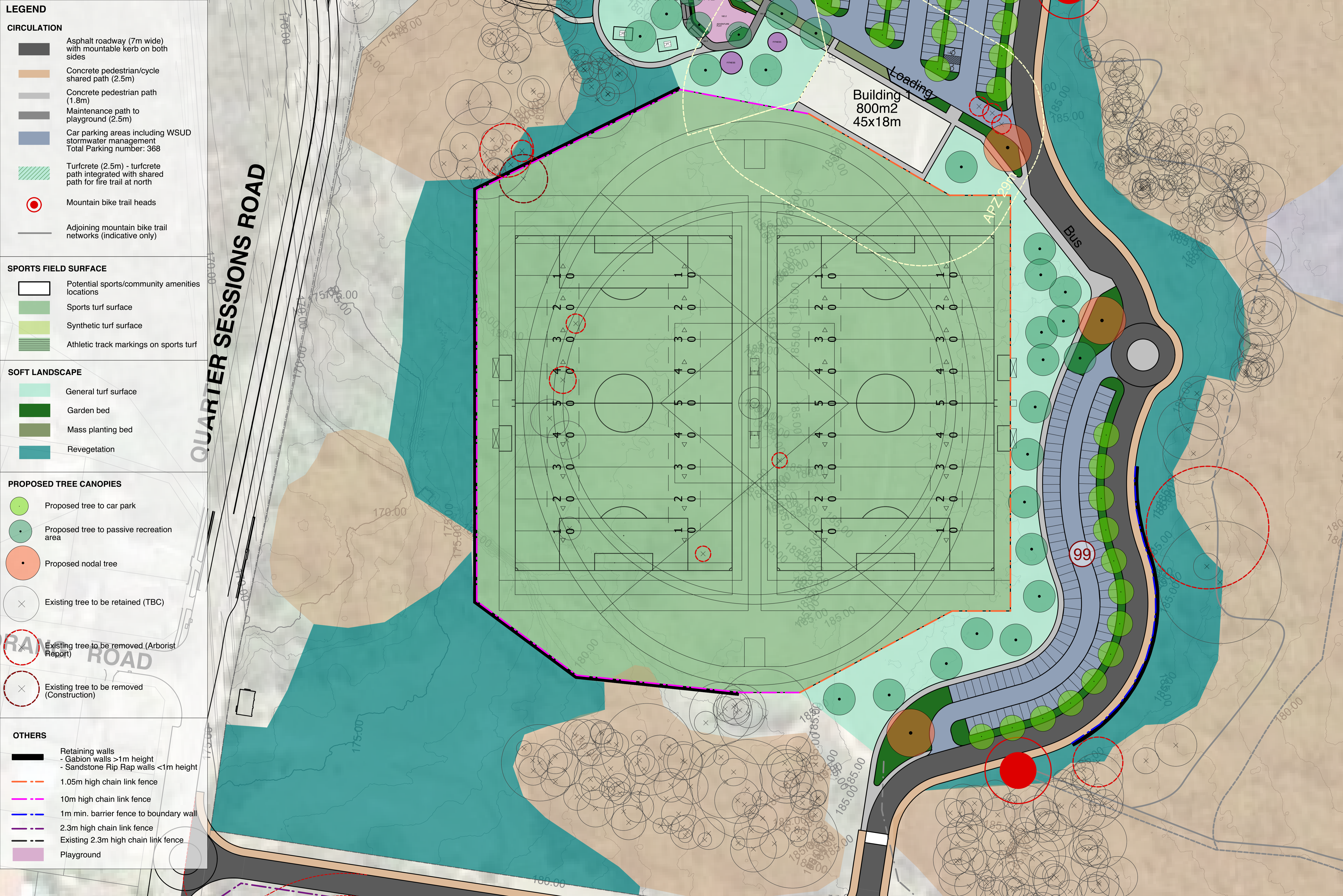
LEGEND

CIRCULATION

	Asphalt roadway (7m wide) with mountable kerb on both sides
	Concrete pedestrian/cycle shared path (2.5m)
	Concrete pedestrian path (1.8m)
	Maintenance path to playground (2.5m)
	Car parking areas including WSUD stormwater management Total Parking number: 368
	Turfcrete (2.5m) - turfcrete path integrated with shared path for fire trail at north
	Mountain bike trail heads
	Adjoining mountain bike trail networks (indicative only)

OTHERS

	Retaining walls - Gabion walls >1m height - Sandstone Rip Rap walls <1m height
	1.05m high chain link fence
	10m high chain link fence
	1m min. barrier fence to boundary wall
	2.3m high chain link fence
	Existing 2.3m high chain link fence
	Playground



- CIRCULATION**
- Asphalt roadway (7m wide) with mountable kerb on both sides
 - Concrete pedestrian/cycle shared path (2.5m)
 - Concrete pedestrian path (1.8m)
 - Maintenance path to playground (2.5m)
 - Car parking areas including WSUD stormwater management
Total Parking number: 368
 - Turfcrete (2.5m) - turfcrete path integrated with shared path for fire trail at north
 - Mountain bike trail heads
 - Adjoining mountain bike trail networks (indicative only)

- SPORTS FIELD SURFACE**
- Potential sports/community amenities locations
 - Sports turf surface
 - Synthetic turf surface
 - Athletic track markings on sports turf

- SOFT LANDSCAPE**
- General turf surface
 - Garden bed
 - Mass planting bed
 - Revegetation

- PROPOSED TREE CANOPIES**
- Proposed tree to car park
 - Proposed tree to passive recreation area
 - Proposed nodal tree
 - Existing tree to be retained (TBC)
 - Existing tree to be removed (Arborist Report)
 - Existing tree to be removed (Construction)

- OTHERS**
- Retaining walls
 - Gabion walls >1m height
 - Sandstone Rip Rap walls <1m height
 - 1.05m high chain link fence
 - 10m high chain link fence
 - 1m min. barrier fence to boundary wall
 - 2.3m high chain link fence
 - Existing 2.3m high chain link fence
 - Playground

QUARTER SESSIONS ROAD

Building
800m2
45x18m

99