

HAVE YOUR SAY ON THE PLANS FOR BEECROFT VILLAGE GARDENS + COMMUNITY CENTRE CARPARK

BEECROFT COMMUNITY CENTRE CARPARK

Hornsby Shire Council is planning to improve the accessibility to the community centre at Beecroft by creating a new carpark for five car spaces (one accessible). In addition, a new entry plaza is proposed with a community gathering space / seating areas within the park; landscaping and retention of existing significant trees and planting of new trees.

Council acknowledges lack of parking and access to the centre as a deterrent for users and community members, particularly the elderly and mobility impaired. There is also a need to provide a safe area for 'kiss and drop' and unloading of equipment as part of a greater vision to make the centre more attractive to the community and its users and maximise the future potential of the centre.

HISTORY

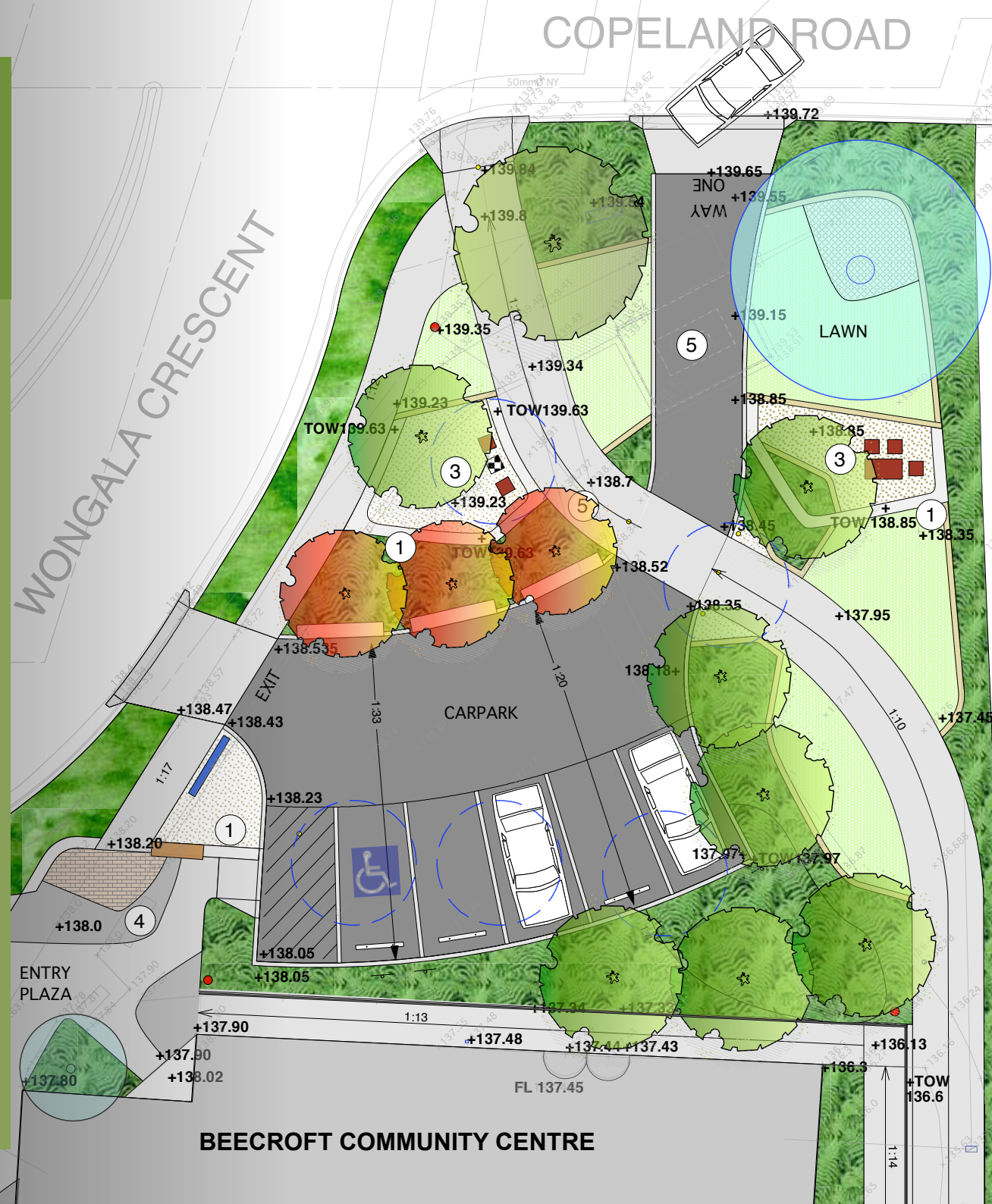
- Since the early 2000s Beecroft Community Centre's volunteer management committee (VMC) worked towards their vision of a carpark for hirers of the centre. Complex site restrictions and proximity to Beecroft Road pose a strong challenge, with numerous design approaches and proposals developed but unable to be progressed.
- 2014 – Beecroft VMC hands over management of centre to Council, including \$240,000 to fund the building of a carpark for hirers of the centre.
- 2016 – 15 years in the making, this current draft concept overcomes site and design challenges, meets Roads and Maritime Services guidelines, and also creates greater public space amenity.

To view full plans, and dates of in person consultations visit:

hornsby.nsw.gov.au/haveyoursaybeecroft

For further information please contact

Julia Morton on 9847 6052 or jmorton@hornsby.nsw.gov.au



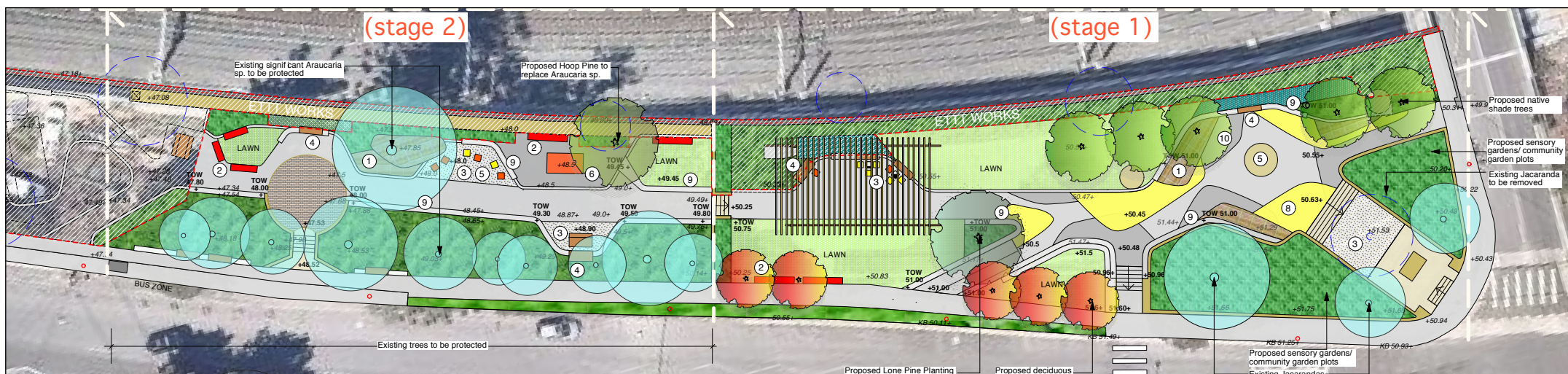
BEECROFT VILLAGE GARDENS

Hornsby Shire Council is planning to upgrade the existing village gardens to create a vibrant parkland which supports a range of activities for both existing and future residents, whilst respecting and celebrating the history and character of its past. The plans include:

- A dedicated War Memorial Precinct / Plaza space to host ceremonies / events and offer a space for reflection and contemplation
- Heritage interpretation in paving to commemorate and respond to local historic context
- Retain all significant trees on site, and plant new trees including White Mahogany and *Araucaria sp.* to replace what was lost
- Opportunity for a range of passive and active recreation activities ie; table tennis, picnic, fitness classes etc. to cater for all age groups
- New shelter structure and picnic table settings
- A number of formal and informal seating areas
- Open lawn areas for passive recreation and picnicking
- Allocated community space – opportunity for community run programs/events ie. garden club, music concerts, outdoor cinema etc.

HISTORY

- 2014 – Funding secured from State and Federal grant programs to contribute to restoration and relocation of Boer War memorial into a dedicated war memorial precinct in Beecroft Village Gardens.
- Council work closely with local RSL Sub-Branch to determine final location of memorial.
- 2014 – Acknowledgment of future growth within the Beecroft Town Centre, Council identified funding to upgrade Beecroft Village Gardens.
- 2014 – Epping to Thornleigh Third Track (ETTT) complete new playground in northern part of park.
- 2016 – Roads and Maritime Services (RMS) build new footbridge linking Beecroft Village Green to Beecroft Primary.



To view full plans, and dates of in person consultations visit:
hornsby.nsw.gov.au/haveyoursaybeecroft

For further information please contact **Tamara Obradovic** on **9847 6857** or tobradovic@hornsby.nsw.gov.au

