

DESIGN

Council is proposing to undertake next stage of upgrade works at Lower Mckell Park, Brooklyn for access and mobility complying with Australian Standards and Disability Discrimination Act (DDA)

The proposed works include:

- Provision of sealed all weather access path connection to Parsley Bay.
- Provision of universal access change rooms and toilets in existing amenities building.
- Provision of universal access to Brooklyn baths with widened steps and accessible ramp.



Existing inaccessible connection from Lower Mckell to Parsley Bay due to surface irregularities and ponding.

PRECEDENT IMAGERY



Proposed paving scheme to tie in with existing sandstone coloured concrete path along foreshore walk with potential texture/patterns and provision of seating pods with back-rest seats.



Parks, Trees and Recreation Branch

Hornsby Shire Council
296 Peats Ferry Road, Hornsby
PO Box 37, Hornsby NSW 1630

Telephone 9847 6666
8.30am - 5pm Mon-Fri

hornsby.nsw.gov.au

LOWER MCKELL PARK, BROOKLYN

STAGE 2

FORESHORE ACCESS IMPROVEMENTS

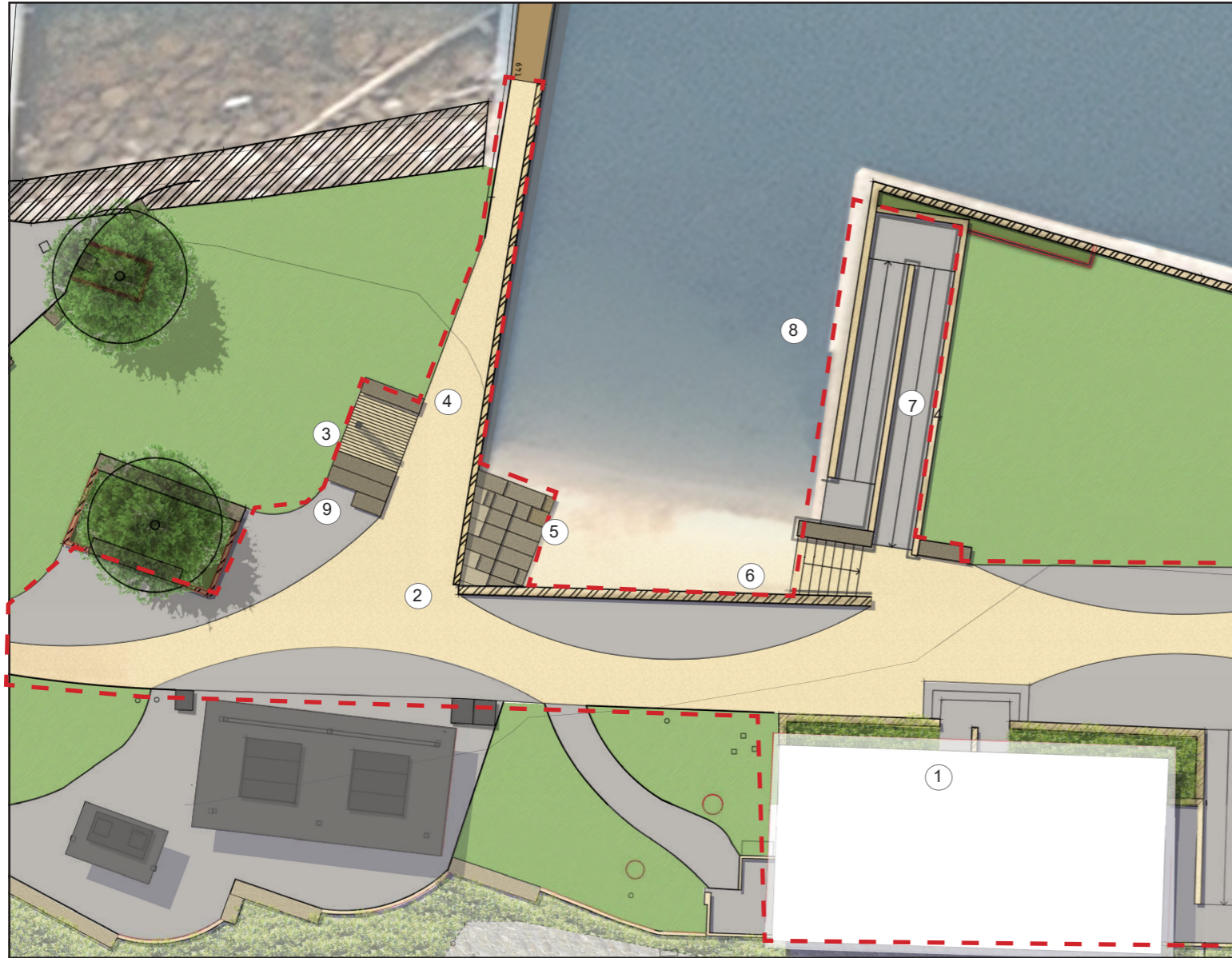
APRIL 2022

PAGE 1 OF 3

Proudly funded by the
NSW Government in association with
Hornsby Shire Council



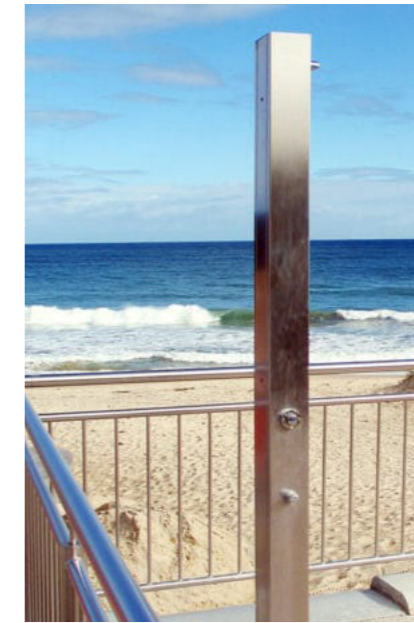
DETAIL PLAN - BROOKLYN BATHS ACCESS



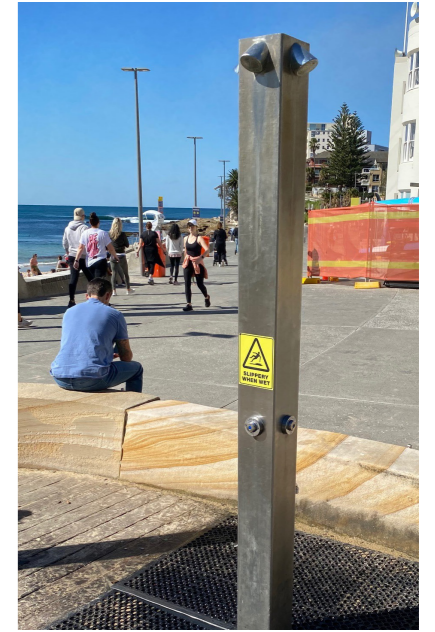
KEY

- ① Existing amenities building upgraded with universal access change rooms and toilets.
- ② Proposed re-graded coloured concrete pavement to tie in with existing foreshore path.
- ③ Proposed outdoor shower for footwash.
- ④ Proposed widened paving connection to wharf.
- ⑤ Informal seating/stepped access to baths.
- ⑥ Upgrade and widened steps for universal access to baths.
- ⑦ Proposed accessible ramp for universal access to baths.
- ⑧ Proposed sea wall integrating artwork.
- ⑨ Informal sandstone seating logs for passive recreation and facilitating supervision opportunities over baths.

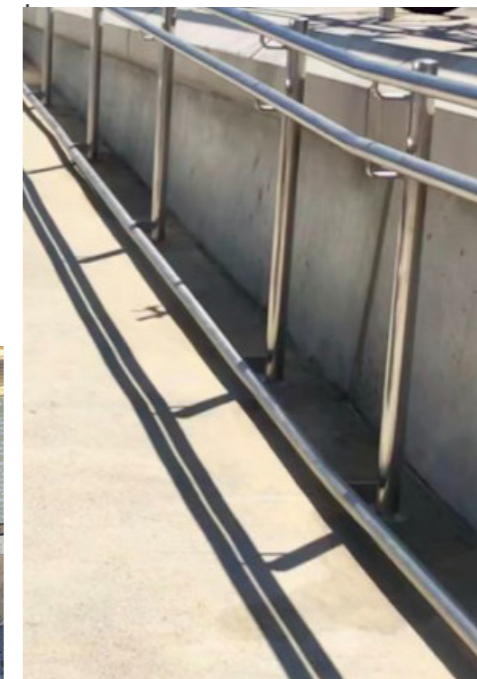
PRECEDENT IMAGERY



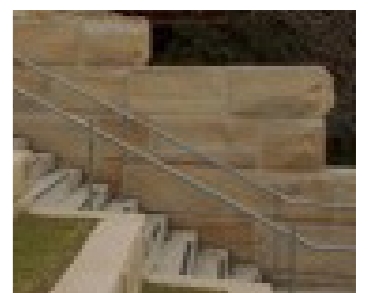
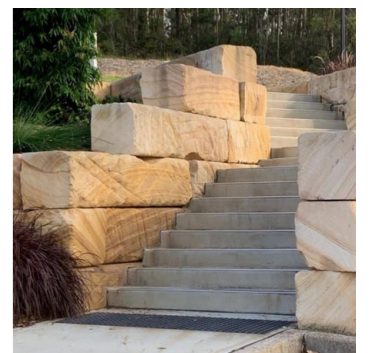
Outdoor shower for footwash defined with sandstone edge blocks.



Outdoor shower - Proposed ridged paving to aid drainage



Concrete accessible ramp with handrails.



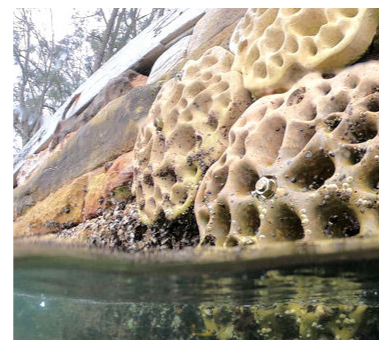
Proposed feature sandstone blocks to frame path/ ramp.

PRECEDENT IMAGERY - ARTWORK

The western face of the proposed sea wall provides opportunities for incorporation of interpretative artwork with potential collaboration from local artists.



Potential artwork installation is proposed to be integrated in sea wall/ informal sandstone seating logs.



Potential for signage to be incorporated in sandstone elements.

Parks, Trees and Recreation Branch

Hornsby Shire Council
296 Peats Ferry Road, Hornsby
PO Box 37, Hornsby NSW 1630

Telephone 9847 6666
8.30am - 5pm Mon-Fri

hornsby.nsw.gov.au

LOWER MCKELL PARK, BROOKLYN

STAGE 2
FORESHORE ACCESS IMPROVEMENTS

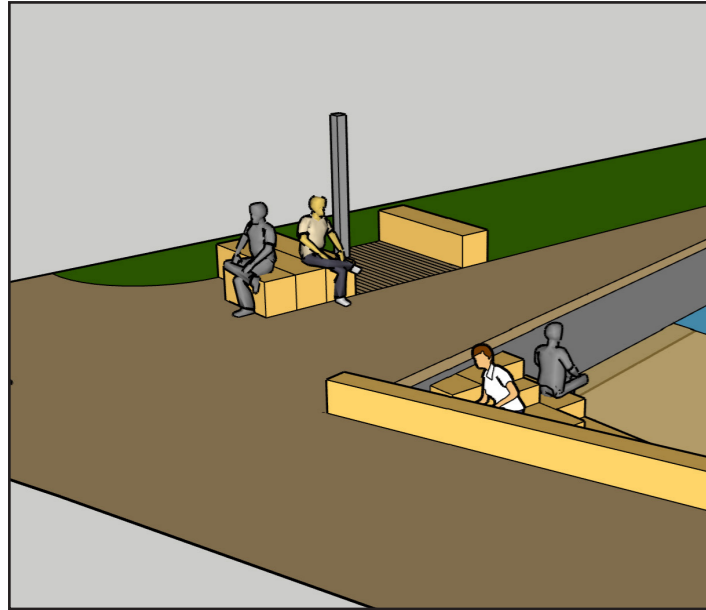
APRIL 2022

PAGE 2 OF 3

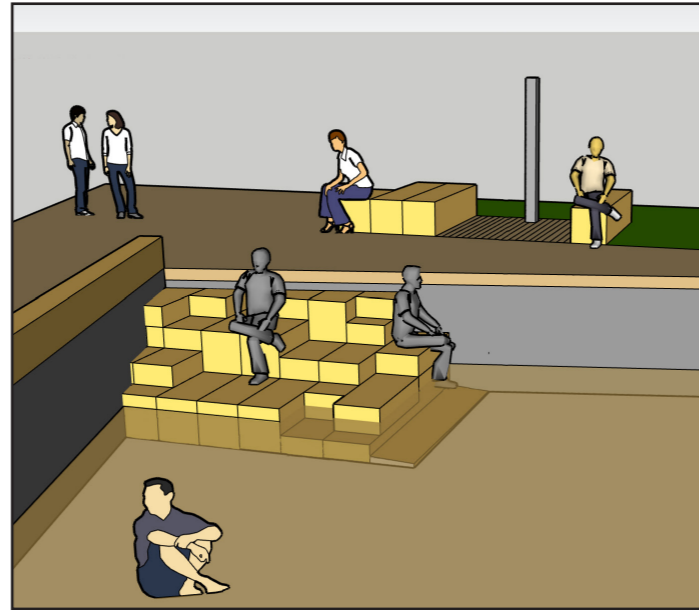
Proudly funded by the
NSW Government in association with
Hornsby Shire Council



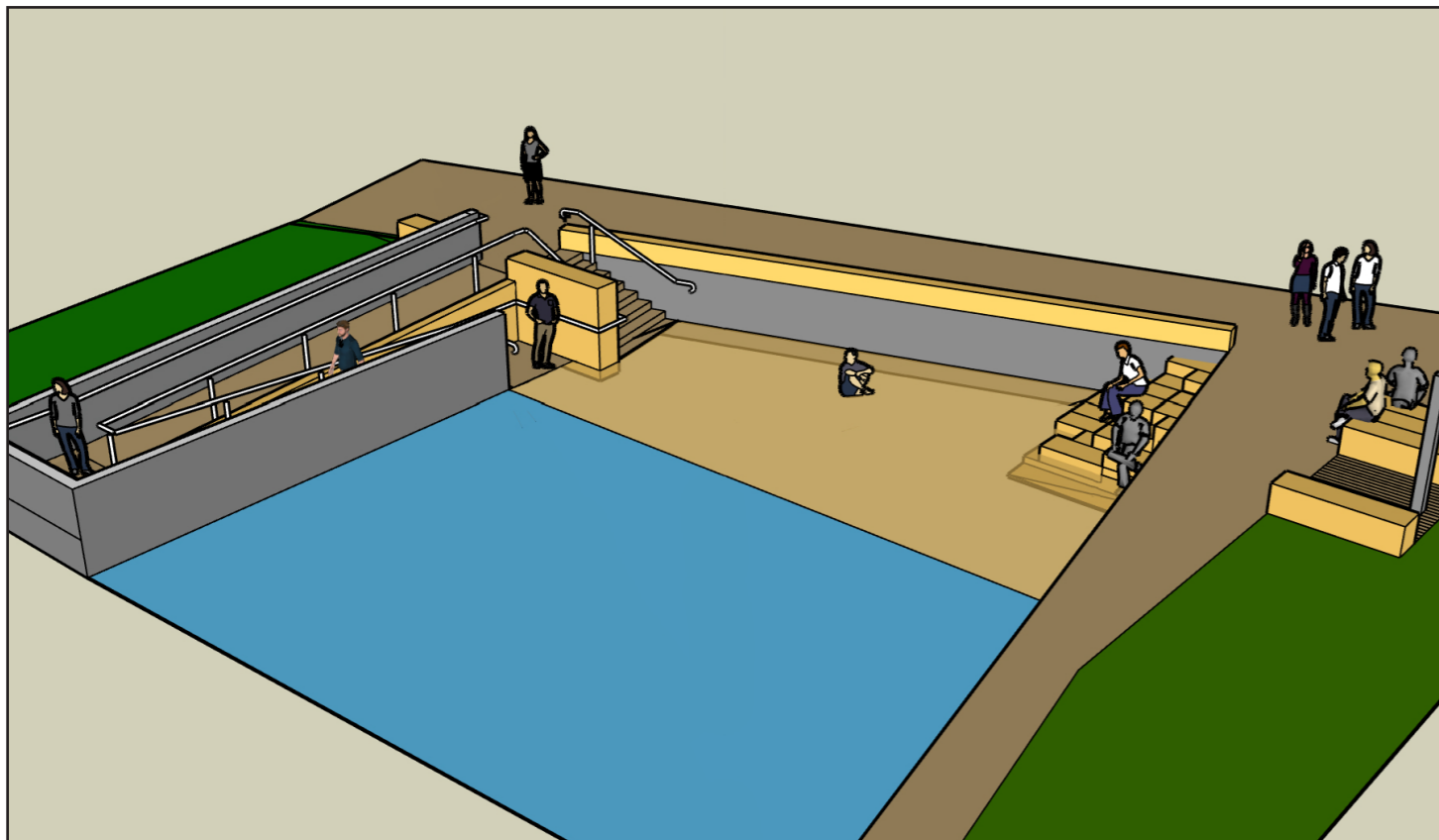
3D IMAGERY



Artist's view of widened walkway to wharf/ outdoor shower area.



Artist's view of informal seating and sandstone stepped access to baths entry.



Artist's view of accessible ramp and stair access to baths from the eastern end and informal stepped access to the western side of baths.

PRECEDENT IMAGERY



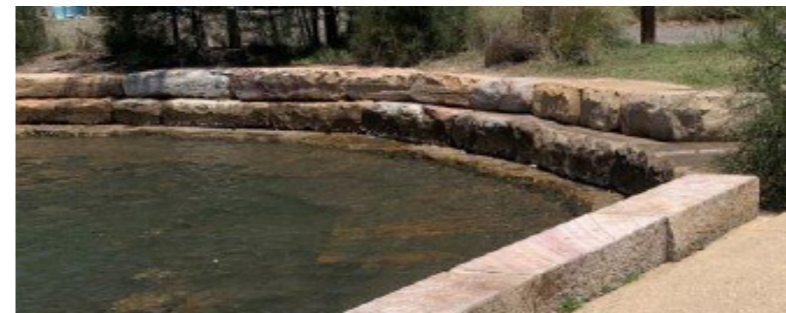
Stepped sandstone courses allow access to baths entry at varying water levels.

The western access to baths is designed to interact with the tidal quality of the baths. The stepped sandstones are intended to extend the available seating area at various tidal levels.

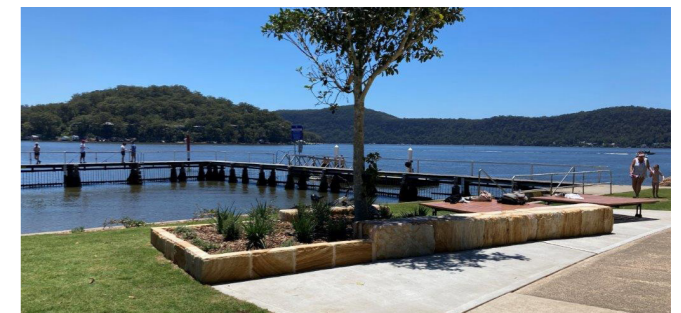
The proposed sandstone is intended to transition from natural finish to more refined finish adjacent to the shower where seating opportunities are proposed.

The sandstone steppers on western edge provide informal access route while the eastern edge provide a more direct, accessible route with the provision of universal access to Brooklyn baths with widened steps and accessible ramp.

CONTINUING MATERIAL PALETTE OF BROOKLYN



Proposed stepped access to Baths tie in with existing stepped access at Parsley Bay.



Proposed informal seating logs tie in with existing informal seating logs at Lower McKell Park.

Parks, Trees and Recreation Branch

Hornsby Shire Council
296 Peats Ferry Road, Hornsby
PO Box 37, Hornsby NSW 1630

Telephone 9847 6666
8.30am - 5pm Mon-Fri

hornsby.nsw.gov.au

LOWER MCKELL PARK, BROOKLYN

STAGE 2
FORESHORE ACCESS IMPROVEMENTS

APRIL 2022

PAGE 3 OF 3

Proudly funded by the
NSW Government in association with
Hornsby Shire Council

