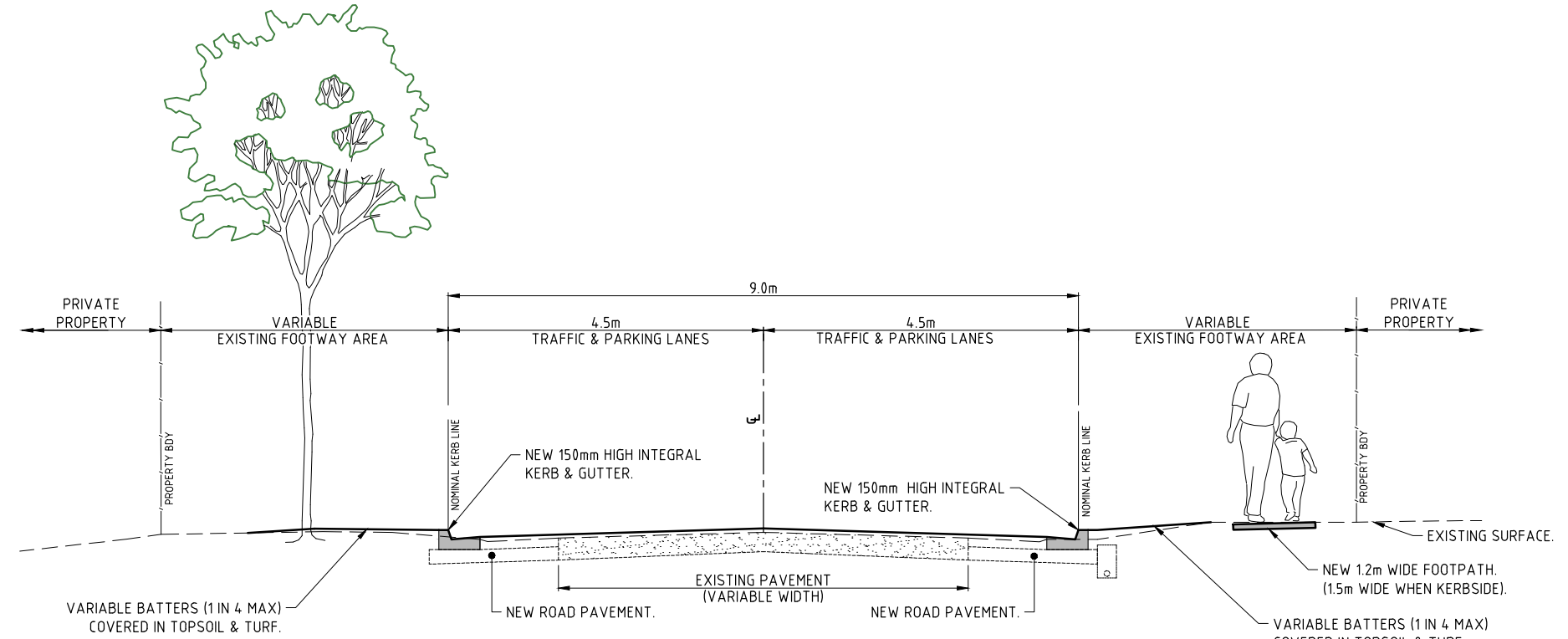


PLAN

**LEGEND**

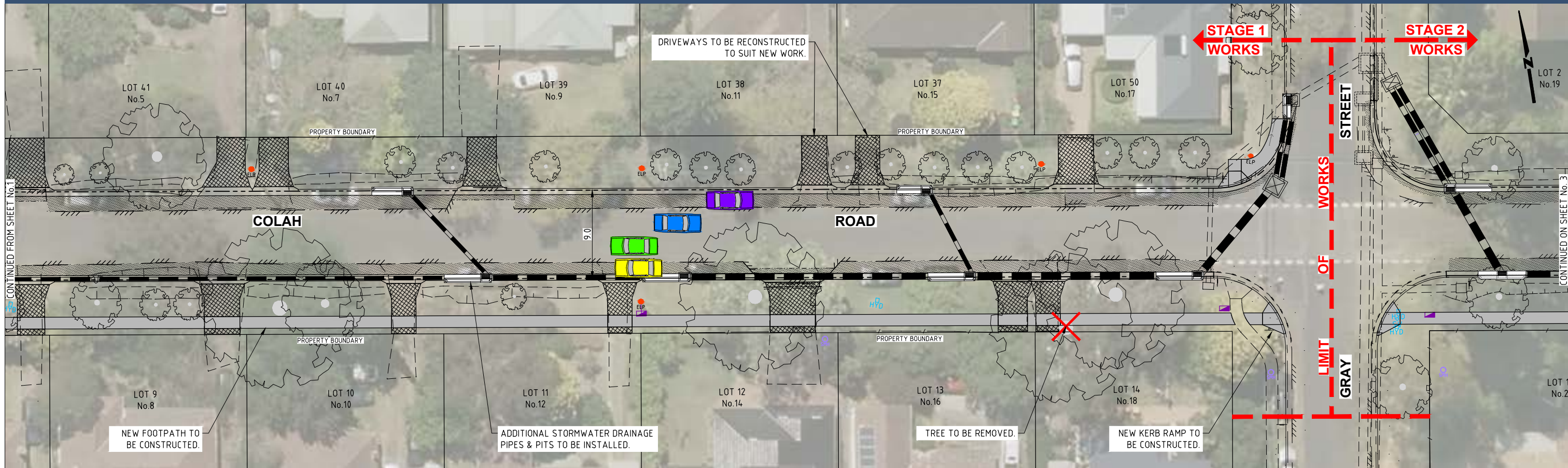
- EXISTING KERB & GUTTER.
- EXISTING FENCE.
- EXISTING CONCRETE PATH EDGE.
- EXISTING STORMWATER PIPE.
- EXISTING TREE.
- EXISTING TREE TO BE REMOVED.
- PROPOSED KERB & GUTTER.
- PROPOSED STORMWATER PIPE.
- PROPOSED STORMWATER INLET PIT.
- EXTENT OF NEW PAVEMENT CONSTRUCTION (REFER TO TYPICAL SECTION ON SHEET No.2 FOR DETAILS).
- EXTENT OF DRIVEWAY RECONSTRUCTION REINSTATED WITH EXISTING OR MATCHING MATERIALS UNLESS NOTED OTHERWISE.
- EXTENT OF NEW FOOTPATH CONSTRUCTION. ALL PATHS N25 CONCRETE 80mm THICK (COLOUR: PLAIN CONCRETE)



**TYPICAL CROSS SECTION**  
NOT TO SCALE

**PRELIMINARY**  
NOT FOR CONSTRUCTION  
ISSUED FOR INFORMATION ONLY





PLAN



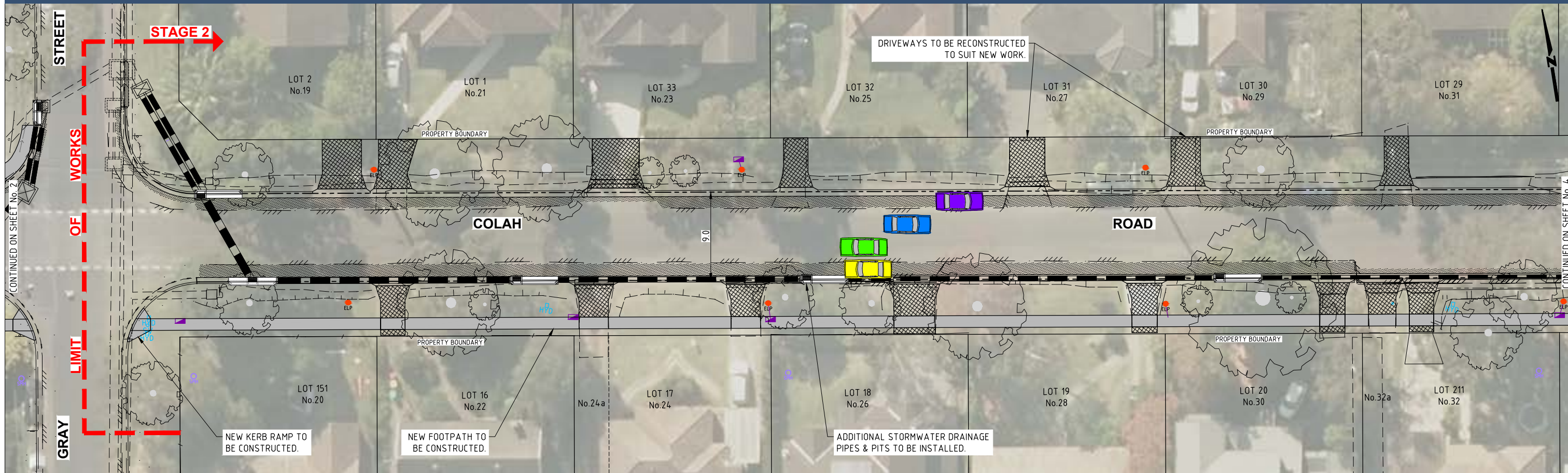
**COLAH ROAD**  
LOOKING EAST FROM OPPOSITE No.3



**COLAH ROAD**  
LOOKING EAST FROM OPPOSITE No.9

**PRELIMINARY**  
NOT FOR CONSTRUCTION  
ISSUED FOR INFORMATION ONLY





PLAN



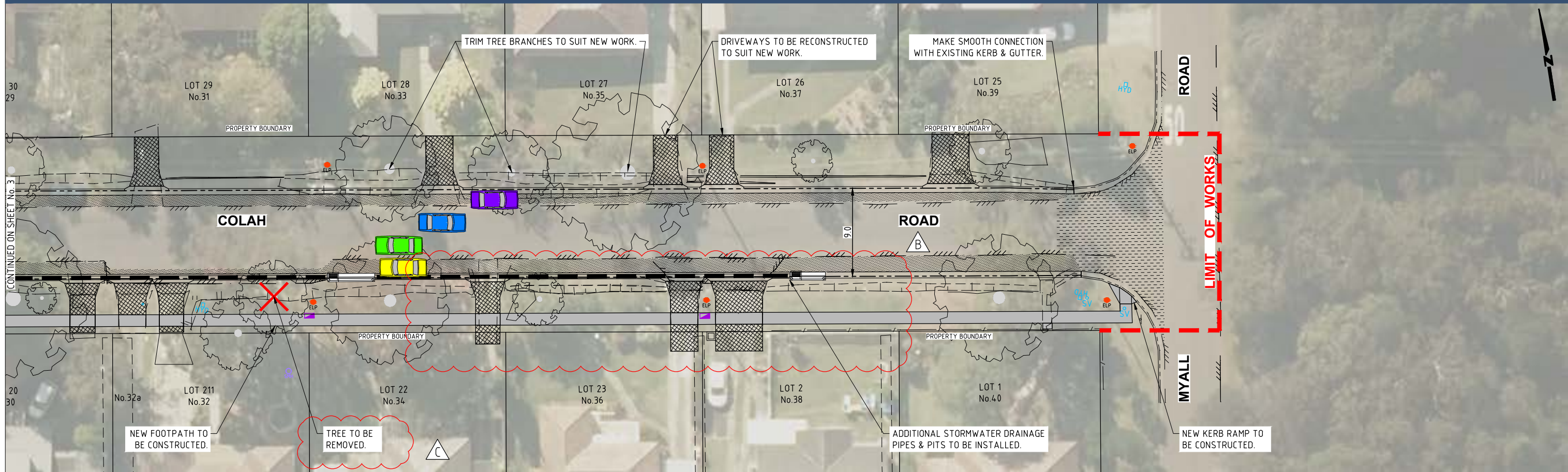
**COLAH ROAD**  
LOOKING EAST FROM OPPOSITE No.15



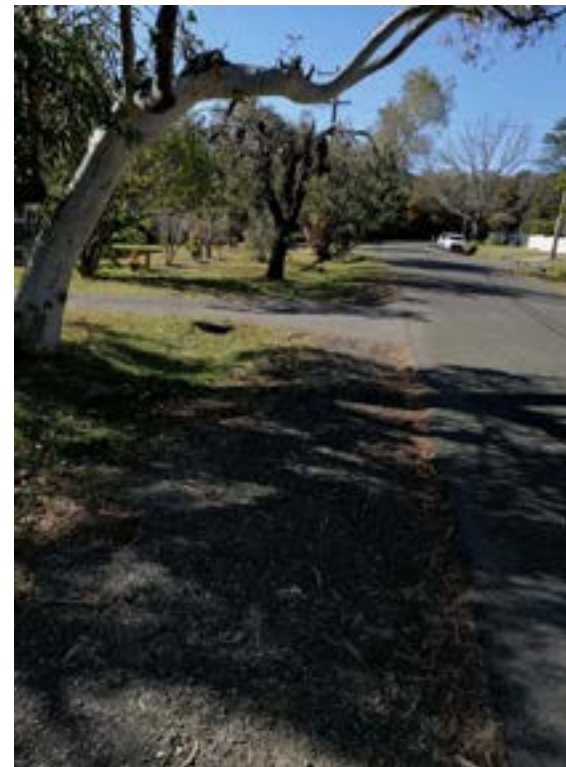
**COLAH ROAD**  
LOOKING EAST FROM OPPOSITE No.19

**PRELIMINARY**  
NOT FOR CONSTRUCTION  
ISSUED FOR INFORMATION ONLY





**COLAH ROAD**  
LOOKING EAST FROM OPPOSITE No.27



**COLAH ROAD**  
LOOKING EAST FROM OPPOSITE No.33

REVISION 30/4/21  
 B. ADJUST PROPOSED FOOTPATH ALIGNMENT.  
 C. PROPOSED TREE REMOVAL AT No.32.

**PRELIMINARY**  
 NOT FOR CONSTRUCTION  
 ISSUED FOR INFORMATION ONLY