

DAVID ROAD, CASTLE HILL PROPOSED RAISED PEDESTRIAN CROSSING

PRELIMINARY
NOT FOR CONSTRUCTION

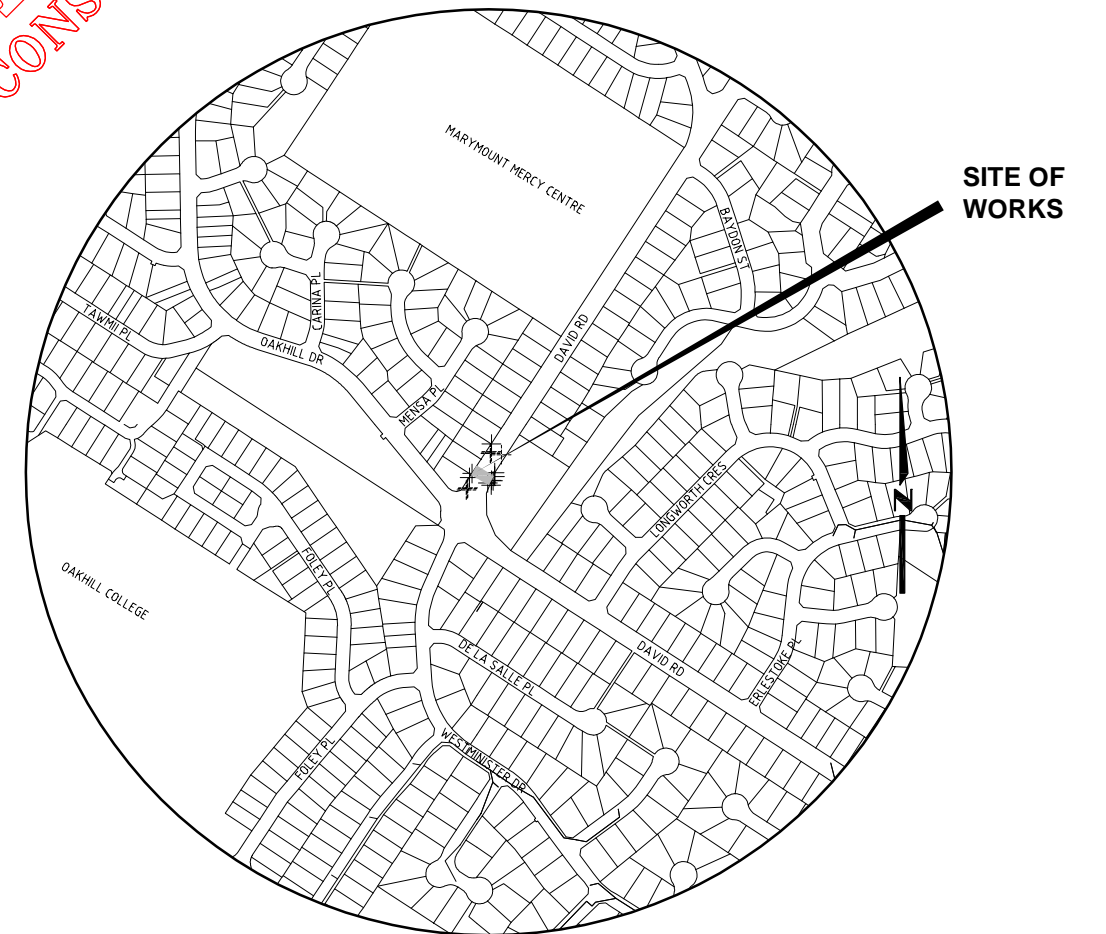
DRAWING SCHEDULE		
SHEET No.	TITLE	ISSUE
1	DRAWING SCHEDULE, LOCALITY PLAN, GENERAL NOTES & LEGEND.	1
2	GENERAL WORKS & SERVICES PLAN & CONCRETE NOTES.	1
3	SETOUT PLAN & CONCRETE JOINT DETAILS.	1
4	SECTIONS A & B & KERB BLISTER ISLAND (EASTERN SIDE) SETOUT PLAN.	1
5	SIGNS & LINE MARKING PLAN.	1

LEGEND

- EXISTING KERB & GUTTER.
- EXISTING STORMWATER PIPE.
- EXISTING CONCRETE PATH EDGE.
- EXISTING POWER POLE.
- EXISTING TELSTRA PIT.
- EXISTING SEWER MAINTENANCE HOLE.
- EXISTING SEWER MAIN.
- EXISTING WATER MAIN.
- EXISTING U/G TELSTRA CABLES.
- EXISTING U/G NBN CABLES.
- EXISTING U/G ELECTRICAL CABLES.
- EXISTING GAS MAIN.
- EXISTING OVERHEAD ELECTRICAL CABLES.
- NEW BROOMED FINISH 25MPa CONCRETE MEDIAN INFILL (COLOUR: TERRACOTTA). REFER TO SHEET No.3 FOR DETAILS.
- EXTENT OF KERB RAMP & FOOTPATH RECONSTRUCTION.
- EXTENT OF RAISED PEDESTRIAN CROSSING. 200mm THICK REINFORCED CONCRETE WITH TWO LAYERS OF SL82 MESH.

GENERAL NOTES:

1. ALL WORKS TO BE CARRIED OUT IN ACCORDANCE WITH THE SPECIFICATIONS & REQUIREMENTS OF HORNSBY SHIRE COUNCIL.
2. EROSION & SEDIMENT CONTROL MEASURES ARE TO BE INSTALLED IN ACCORDANCE WITH THE LANDCOM PUBLICATION:- "MANAGING URBAN STORMWATER, SOILS & CONSTRUCTION" Vol. 1, 4th EDITION.
3. ALL DISTURBED AREAS OF THE SITE INCLUDING FENCES, GATES, DRIVEWAYS ETC. ARE TO BE REINSTATED WITH EXISTING OR MATCHING MATERIALS UNLESS NOTED OTHERWISE (COVERED WITH MULCH) AT THE COMPLETION OF THE WORKS.
4. PROVIDE TRAFFIC MANAGEMENT, LINE MARKING & SIGNAGE IN ACCORDANCE WITH "THE MANUAL OF UNIFORM TRAFFIC CONTROL DEVICES" AS1742 REQUIREMENTS.
5. APPROVED BY LOCAL TRAFFIC COMMITTEE ON TBA REF: TBA.



LOCALITY PLAN
NOT TO SCALE

TRAFFIC & ROAD SAFETY BRANCH		
<small>Senior Traffic Engineer</small>		
<small>Name</small> R.ZARZYCKI		<small>Telephone</small> 9847 6684
<small>Accepted as complying with the general intent of the design brief</small>		
<small>Signed</small>		<small>Date</small>
<small>Project Number</small>		
100629		
<small>Sheet</small>	<small>of</small>	<small>Issue</small>
1	5	1
<small>HSC Drawing Number</small>		
127.22		

**Hornsby Shire Council
Design & Construction
Branch**

TELEPHONE: (02) 9847 6666
FACSIMILE: (02) 9847 6999
Authorised for release - Manager Design & Construction
Name: R. RAJCA Signed: Date:

<small>Designer</small> X ZHENG	<small>Design Checked-Design Team Leader</small>		
<small>Drawn</small> X ZHENG	<small>Signed:</small>		
<small>Surveyor</small> J HART	<small>NA</small>	<small>NA</small>	<small>AHD</small>
<small>Project Identifier\VCAD File Name</small>	<small>Field Book</small>	<small>Level Book</small>	<small>Datum</small>
<small>H:\David_Rd_TR_100629\Design\ACAD\David Rd Ped Crossing 3.dwg</small>			
<small>TRM Document Number</small>	<small>Issue</small>		
F2005/00743	1		

Issue	Description	Name	Initial	Date
1	ISSUED FOR CONSTRUCTION			

Design not to be amended without authorisation by Manager Design & Construction

Bar Scales

NOT TO SCALE

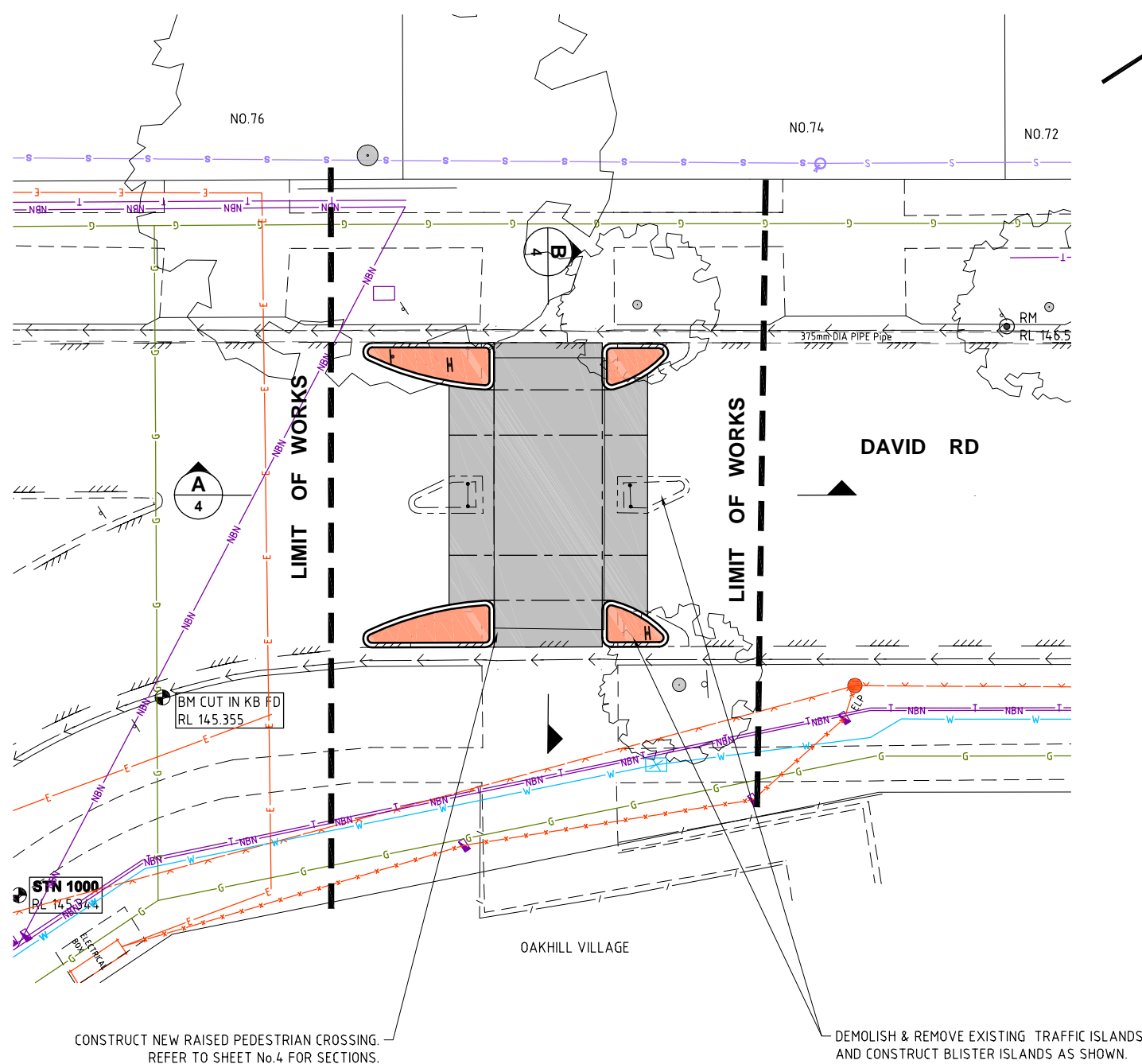
DO NOT SCALE. USE FIGURED DIMENSIONS ONLY

DRAFT
not for construction

**HORNSBY
SHIRE COUNCIL**
PO BOX 37, HORNSBY NSW 1630

**DAVID ROAD, CASTLE HILL
PROPOSED RAISED PEDESTRIAN CROSSING**

DRAWING SCHEDULE, LOCALITY PLAN, GENERAL NOTES & LEGEND



PLAN
SCALE 1:100

WARNING
BEWARE OF UNDERGROUND SERVICES
THE LOCATIONS OF UNDERGROUND SERVICES HAVE BEEN INTERPOLATED FROM KNOWN POSITIONS OF VALVES, MANHOLES ETC. AND/OR INFORMATION SUPPLIED BY SERVICE AUTHORITIES. NO RESPONSIBILITY IS TAKEN FOR THE ACCURACY OF THE INTERPOLATED INFORMATION SUPPLIED. ENSURE ALL SERVICES ARE ACCURATELY LOCATED PRIOR TO COMMENCEMENT OF WORK.

REFER TO SHEET No.3 FOR SETOUT & CONCRETE JOINT DETAILS.

REFER TO SHEET No.5 FOR SIGNS AND LINE MARKING DETAILS.

CONCRETE NOTES:

(USING STEEL REINFORCED CONCRETE U.N.O.)

- MATERIALS & CONSTRUCTION: TO AS 3600, AS 3610.
STEEL REINFORCEMENT MATERIALS: TO AS 4671.
- CONCRETE QUALITY: TO AS 1379
READY MIX CONCRETE: TO AS 1379
a) DO NOT USE ADMIXTURES WITHOUT WRITTEN APPROVAL FROM CONSTRUCTION ENGINEER.
b) CEMENT: TYPE 'GP' OR 'GB' TO AS 3972.
c) MAXIMUM SIZE OF COARSE AGGREGATE: 20mm.
d) CONCRETE SLUMP: 80mm U.N.O.

ELEMENT	CHARACTERISTIC CONCRETE STRENGTH(f'c) AT 28 DAYS	COVER	SPECIAL REQUIREMENTS
PLATFORM AND RAMPS	S 32 (U.N.O.)	AS DETAILED	BROOM FINISH

- VERIFY STRENGTH BY PRODUCTION CONTROL TESTING TO AS 1379.
- NO UNSPECIFIED HOLES, PIPES, CONDUITS OR CHASES ARE PERMITTED WITHOUT WRITTEN APPROVAL FROM CONSTRUCTION ENGINEER.
- STRUCTURAL DIMENSIONS DO NOT INCLUDE TOPPING OR FINISHES.
- FORM CONSTRUCTION JOINTS ONLY AT LOCATIONS SHOWN ON DRAWINGS. DO NOT VARY WITHOUT WRITTEN APPROVAL FROM SUPERVISING ENGINEER.
- PREPARE COLD JOINTS BY LIGHT SCABBLING, REMOVAL OF DEBRIS & WASHING WITH CLEAN WATER.
- FOUNDATION MATERIALS MUST BE CAPABLE OF WITHSTANDING A SAFE BEARING PRESSURE OF 100kPa. VERIFY & RECORD THE BEARING CAPACITY BEFORE ANY CONCRETE IS PLACED.
- DO NOT PLACE CONCRETE UNTIL REINFORCEMENT (IF USED) & FORMWORK ARE INSPECTED BY SUPERVISING ENGINEER.
- THOROUGHLY CLEAN OUT ALL FORMWORK PRIOR TO POURING.
- DO NOT PLACE CONCRETE UNDER THE FOLLOWING CONDITIONS:
a) WHEN THE SURROUNDING OUTDOOR TEMPERATURE EXCEEDS 30°C.
b) WHEN THE SURROUNDING WIND SPEED EXCEEDS 12 KNOTS.
- DO NOT PLACE CONCRETE WHEN THE CONCRETE TEMPERATURE AT THE TIME OF DELIVERY EXCEEDS 35°C.
- IMPLEMENT THE FOLLOWING PROCEDURES TO MITIGATE PREMATURE DRYING & CRACKING OF THE CONCRETE:
a) IN HOT CONDITIONS, PROGRAM CONCRETE PLACEMENT FOR THE COOLER PART OF THE DAY (ie. EARLY MORNING).
b) SPRAY EVAPORATIVE RETARDERS WITH FUGATIVE DYES (eg. ALIPHATIC ALCOHOL) OVER THE SURFACE IMMEDIATELY AFTER SCREEDING & WHILE BLEED WATER IS STILL PRESENT. REAPPLY IF THE SURFACE IS DISTURBED.
c) COMMENCE CURING IMMEDIATELY AFTER FINISHING. CURE FOR 7 DAYS.
- VIBRATE CONCRETE DURING PLACEMENT TO GIVE MAXIMUM COMPACTION WITHOUT SEGREGATION.
- SURFACE FINISH - REFER TO DRAWINGS FOR DETAILS.
- COMMENCE CURING OF ALL CONCRETE SURFACES IMMEDIATELY ON FINISHING & CONTINUE FOR 7 DAYS MIN.
- EXPANSION JOINTS & ISOLATION JOINTS ARE TO BE SEALED TO MANUFACTURER'S SPECIFICATIONS WITH A GUN GRADE POLYURETHANE LOW MODULUS SELF PRIMING SEALANT EQUAL TO 'TREMCO DYMONIC NT' (+100%, -50% MOVEMENT CAPACITY). SEALANT COLOUR AS SPECIFIED IN PROJECT DRAWINGS.

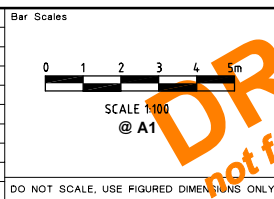
PRELIMINARY
NOT FOR CONSTRUCTION

Hornsby Shire Council
Design & Construction
Branch

TELEPHONE: (02) 9847 6666
FACSIMILE: (02) 9847 6999
Authorised for release - Manager Design & Construction
Name: R. RAJCA Signed: Date:

Designer: X ZHENG
Drawn: X ZHENG
Surveyor: J HART
Project Identifier: \\CAD File Name: H:\David_Rd_TR_100629\Design\ACAD\David Rd Ped Crossing 3.dwg
TRM Document Number: F2005/00743

Design Checked-Design Team Leader	Signed:				
Drawn	Drawn Checked				
Surveyor	Signed:				
Field Book	Level Book	AHD	Datum		
1	ISSUED FOR CONSTRUCTION				
Issue	Description	Name	Initial	Date	
Design not to be amended without authorisation by Manager Design & Construction					



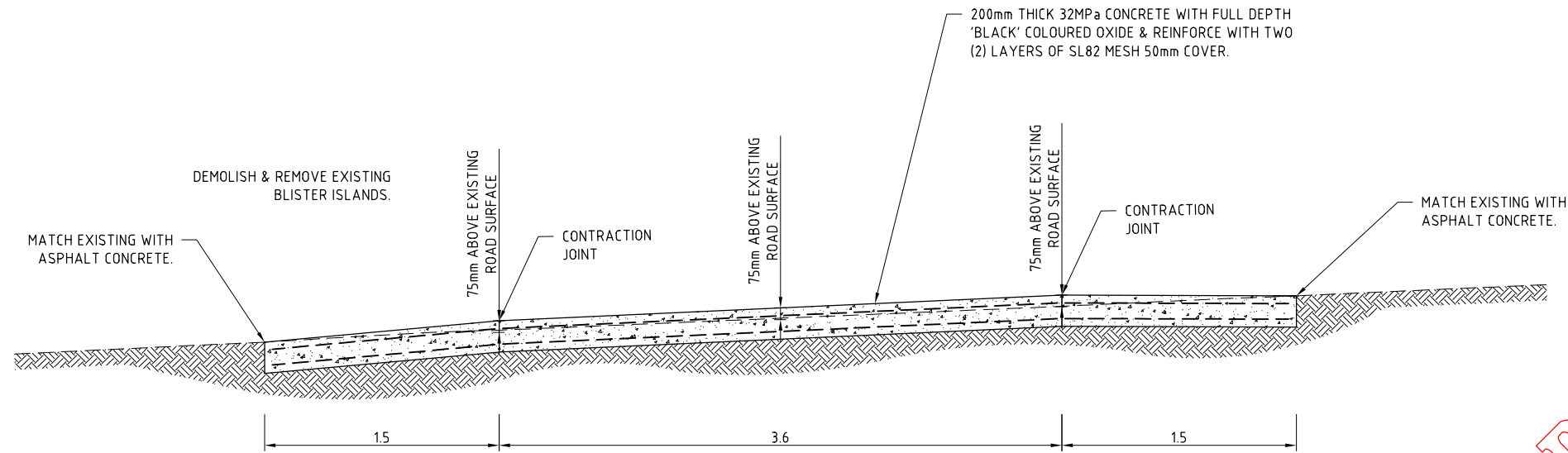
DRAFT
not for construction

HORNSBY
SHIRE COUNCIL
PO BOX 37, HORNSBY NSW 1630

DAVID ROAD, CASTLE HILL
PROPOSED RAISED PEDESTRIAN CROSSING

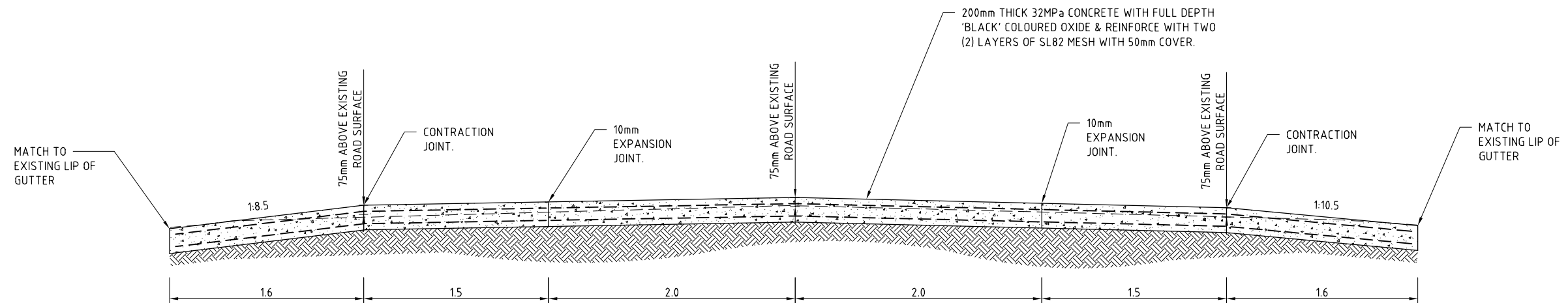
GENERAL WORKS & SERVICES PLAN & CONCRETE NOTES

Project Number	100629		
Sheet	of	Issue	
2	5	1	
HSC Drawing Number	127.22		

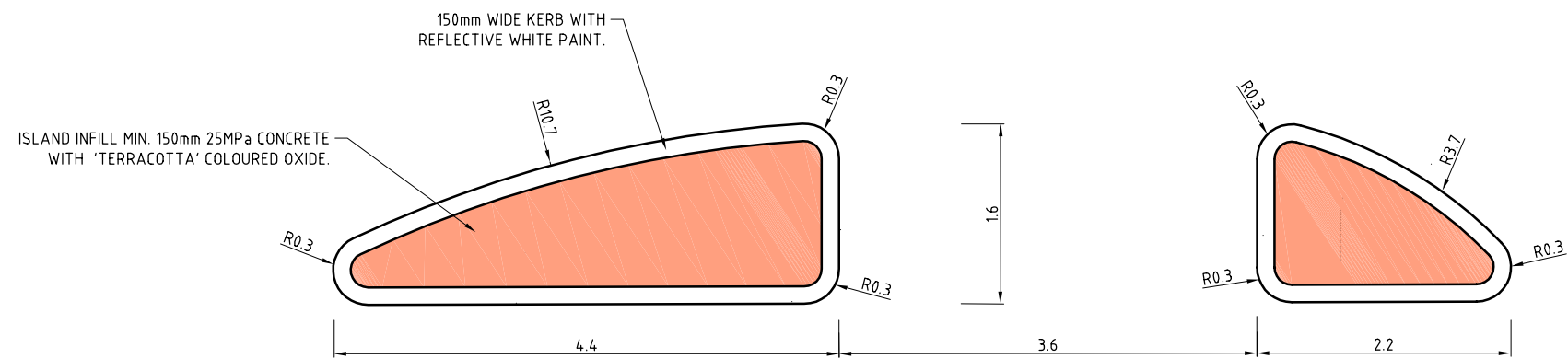


SECTION A
SCALE N.T.S. 2

PRELIMINARY
NOT FOR CONSTRUCTION



SECTION B
SCALE N.T.S. 2



KERB BLISTER ISLAND (EASTERN SIDE) SETOUT PLAN

NOT TO SCALE

**Hornsby Shire Council
Design & Construction
Branch**

TELEPHONE: (02) 9847 6666
FACSIMILE: (02) 9847 6999
Name: R. RAJCA Signed: Date:

Designer X ZHENG	Design Checked-Design Team Leader Signed:		
Drawn X ZHENG	Drawing Checked Signed:		
Surveyor J HART	NA Field Book	NA Level Book	AHD Datum
Project Identifier\VCAD File Name H:\David_Rd_TR_100629\Design\ACAD\David Rd Ped Crossing 3.dwg			
TRM Document Number F2005/00743			

Issue	Description	Name	Initial	Date
1	ISSUED FOR CONSTRUCTION			

Design not to be amended without authorisation by Manager Design & Construction

Bar Scales

NOT TO SCALE

DRAFT
not for construction

**HORNSBY
SHIRE COUNCIL**
PO BOX 37, HORNSBY NSW 1630

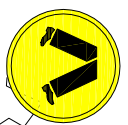
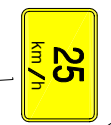
**DAVID ROAD, CASTLE HILL
PROPOSED RAISED PEDESTRIAN CROSSING**

**SECTIONS 1 & B & KERB BLISTER LISAND (EASTERN SIDE)
SETOUT PLAN**

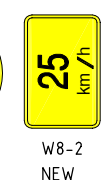
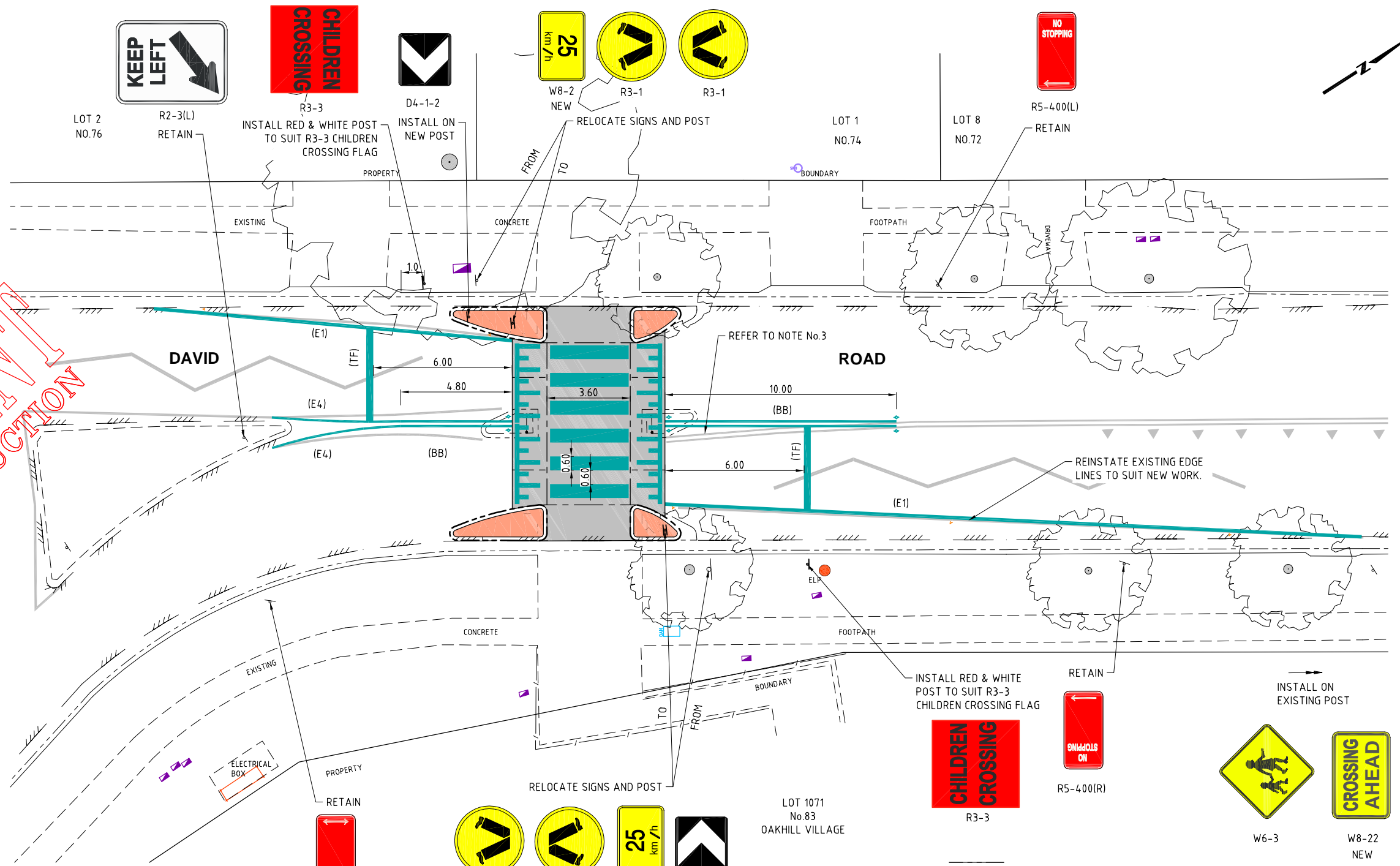
Project Number 100629	
Sheet 4	of 5
Issue 1	
HSC Drawing Number 127.22	



INSTALL ON EXISTING POST



CHECK PRINT
NOT FOR CONSTRUCTION



SIGNS & LINE MARKING PLAN

SCALE 1:100

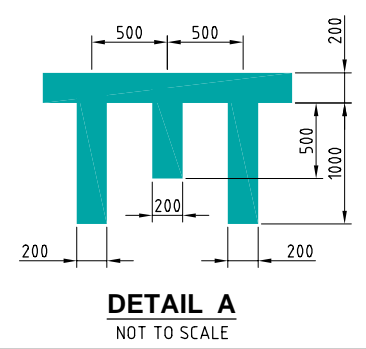
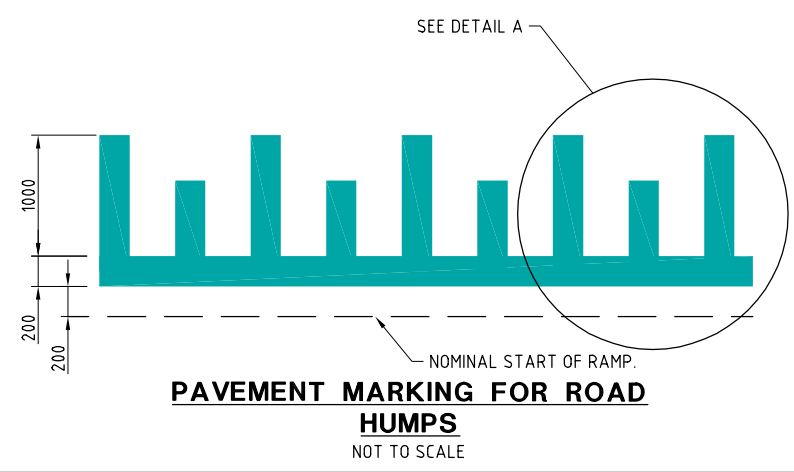
LINE MARKING LEGEND

- PROPOSED LINE MARKING.
- EXISTING LINE MARKING.
- ⊥ EXISTING SIGN.
- ⊥ NEW SIGN.

THIS DRAWING SHALL ONLY BE REPRODUCED AND READ IN COLOUR

LINE MARKING NOTES

1. SIGNS & LINE MARKING TO BE INSTALLED IN ACCORDANCE WITH MANUAL OF UNIFORM TRAFFIC CONTROL DEVICES/ AS1742 REQUIREMENTS.
2. WHERE POSSIBLE EXISTING SIGNAGE IS TO BE CLEANED & REUSED TO SUIT NEW WORK.
3. REMOVE REDUNDANT LINE MARKING.
4. KERB ON MEDIAN ISLANDS SHALL BE PAINTED WITH REFLECTIVE WHITE PAINT.
5. TEMPORARY 'CHANGED TRAFFIC CONDITIONS AHEAD' (T1-23) SIGNS TO BE INSTALLED ON ALL APPROACHES APPROXIMATELY 100m FROM LIMIT OF WORKS (TYPICAL) AT THE COMMENCEMENT OF WORKS & UNTIL 6 MONTHS AFTER COMPLETION.
7. REMOVE REDUNDANT RAISED PAVEMENT MARKERS (RPM) INSTALL 6 YY RPMs AT NEW BB LINES AS SHOWN INSTALL 5 R RPMs AT NEW E1 LINES AS SHOWN
6. THIS PLAN WAS APPROVED BY LOCAL TRAFFIC COMMITTEE IN



**Hornsby Shire Council
Design & Construction
Branch**

TELEPHONE: (02) 9847 6666
FACSIMILE: (02) 9847 6999

Authorised for release - Manager Design & Construction
Name: R. RAJCA Signed: Date:

Designer X ZHENG	Design Checked-Design Team Leader		
Drawn X ZHENG	Signed:		
Surveyor J HART	NA Field Book	NA Level Book	AHD Datum
Project Identifier\VCAD File Name H:\David_Rd_TR_100629\Design\ACAD\David Rd Ped Crossing 7.dwg			
TRM Document Number			
1	ISSUED FOR CONSTRUCTION	M. DRAKE	
Issue	Description	Name	Initial Date
Design not to be amended without authorisation by Manager Design & Construction			

Bar Scales

SCALE 1:100 @ A1

HORNSBY SHIRE COUNCIL
PO BOX 37, HORNSBY NSW 1630

**DAVID ROAD, CASTLE HILL
PROPOSED RAISED PEDESTRIAN CROSSING**

SIGNS & LINE MARKING PLAN

Project Number 100629	Sheet 5	of 5	Issue 1
HSC Drawing Number 127.22			