

# WISEMAN'S FERRY RECREATION RESERVE PLAYGROUND UPGRADE

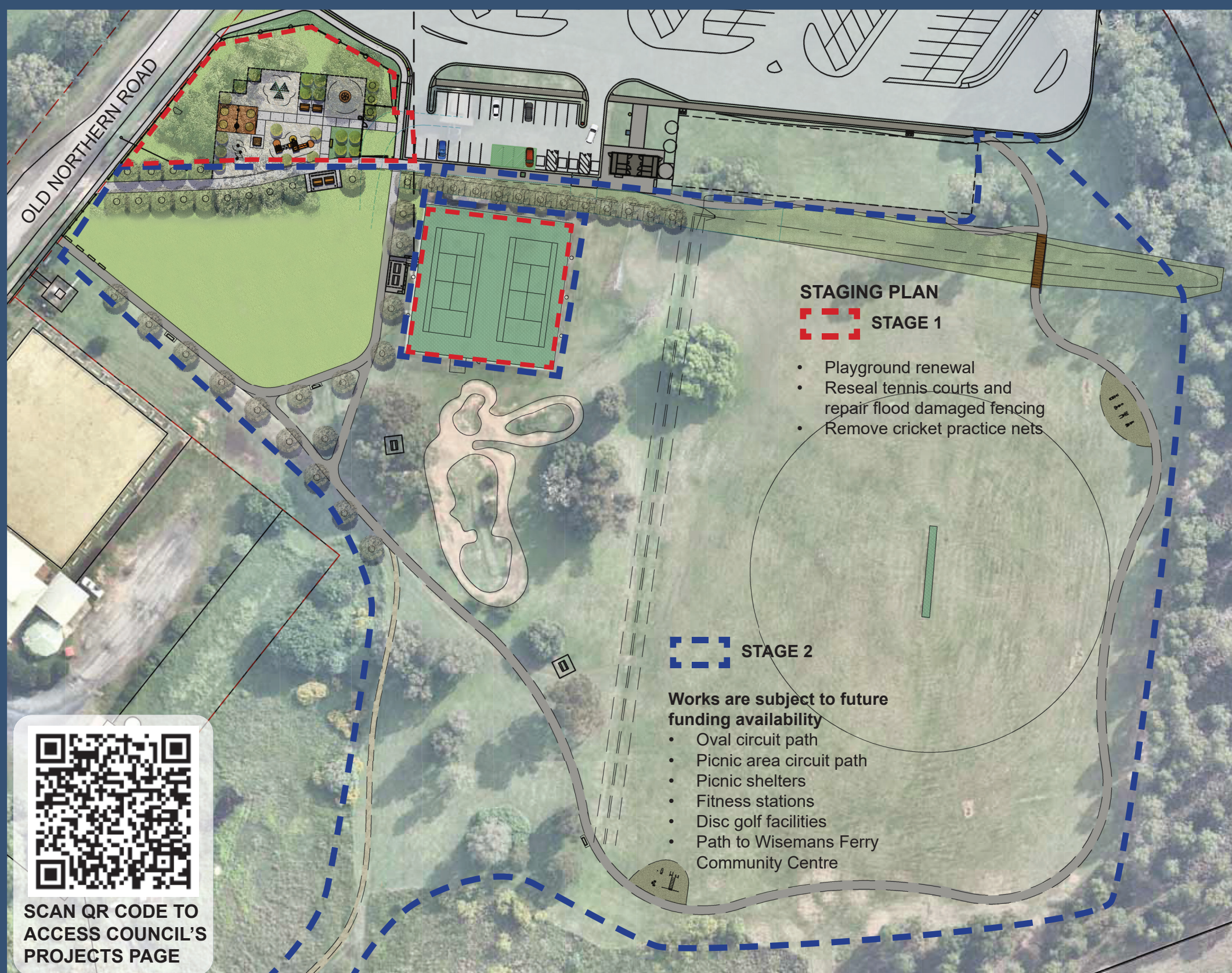
## STAGE 1 OF MASTERPLAN

Commencing in mid August Council will undertake upgrade works at Wiseman's Ferry Recreation Reserve to implement stage 1 of the adopted masterplan that underwent community consultation in August 2021.

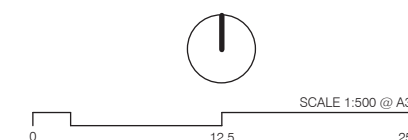
The proposed stage 1 works include:

- Removal of existing playground and cricket nets that were damaged by flooding
- Removal of existing picnic shelter associated with the tennis court (new relocated shelters are proposed in the next stage of works)
- New playground featuring an agricultural theming and aesthetic
- New tree plantings and circulation pathways

Demolition works are programmed for the second half of August and construction works will commence in early September with completion in October. No public access will be available to the Stage 1 construction zone during works.



If you require any further information please contact Council's Landscape Architect / Project Manager Katie Leung on **9847 6893** or visit Council's website at <https://www.hornsby.nsw.gov.au/council/noticeboard/works/park-playspace-projects>



# NEW WISEMAN'S FERRY RECREATION RESERVE PLAYGROUND

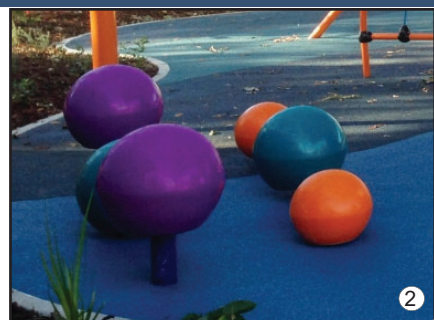
Boat ramp entry / exit



## PLAYGROUND ELEMENTS



Double swings with basket seat



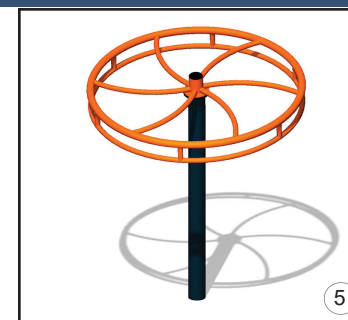
Steppers



Net climbing structure



Climbing structure with double slide



Spin a way



Orchard style tree planting grid

- ⑦ Picnic settings
- ⑧ Seating platform
- ⑨ Post and rail style timber fencing