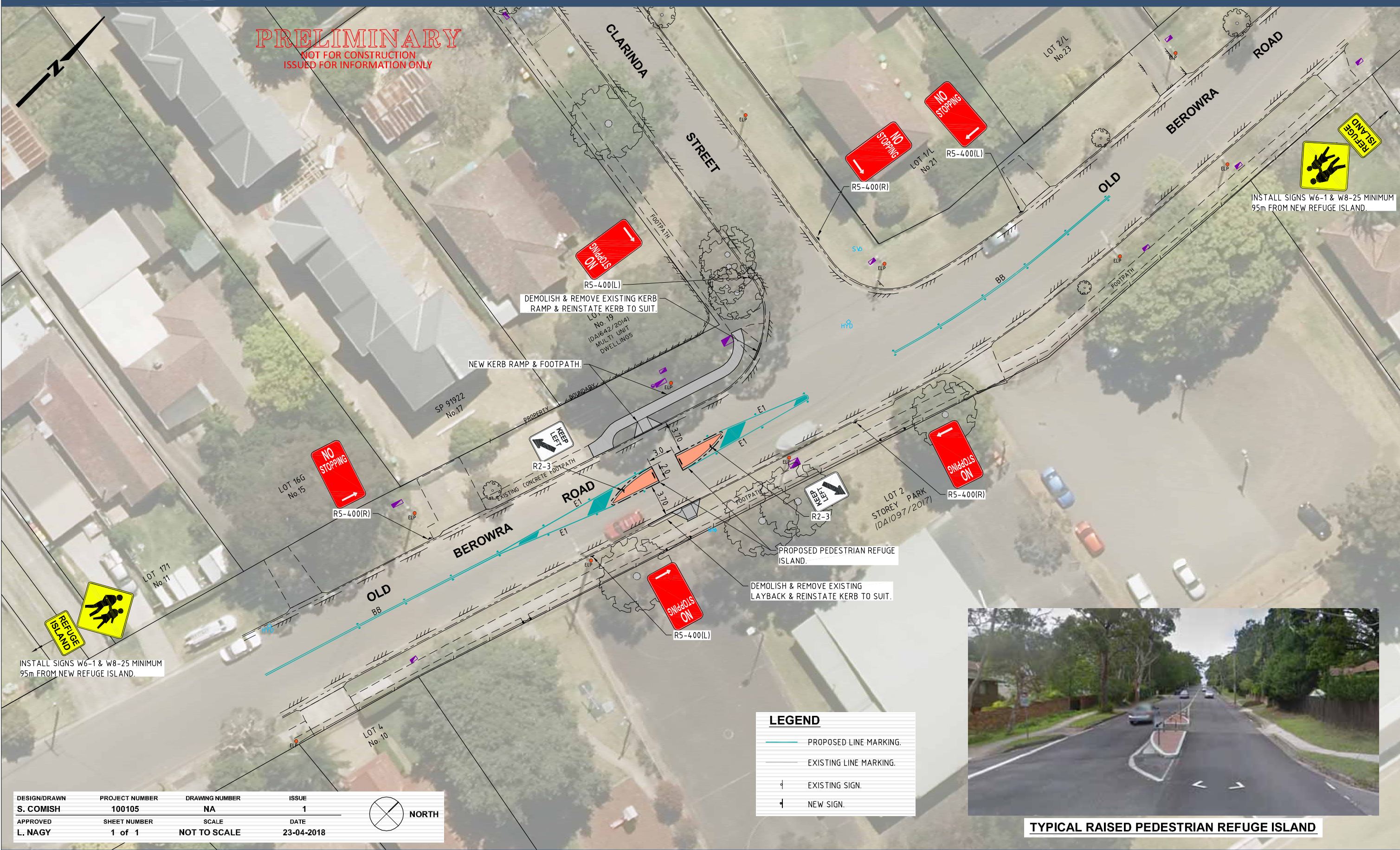


PRELIMINARY
NOT FOR CONSTRUCTION
ISSUED FOR INFORMATION ONLY



DESIGN/DRAWN	PROJECT NUMBER	DRAWING NUMBER	ISSUE
S. COMISH	100105	NA	1
APPROVED	SHEET NUMBER	SCALE	DATE
L. NAGY	1 of 1	NOT TO SCALE	23-04-2018

LEGEND	
	PROPOSED LINE MARKING.
	EXISTING LINE MARKING.
	EXISTING SIGN.
	NEW SIGN.



TYPICAL RAISED PEDESTRIAN REFUGE ISLAND

Design and Construction Branch
Hornsby Shire Council
296 Peats Ferry Road, Hornsby
PO Box 37, Hornsby NSW 1630

Telephone 9847 6666
8.30am-5pm Monday to Friday
hornsby.nsw.gov.au

OLD BEROWRA ROAD, HORNSBY PROPOSED PEDESTRIAN REFUGE ISLAND

CONSULTATION PLAN

