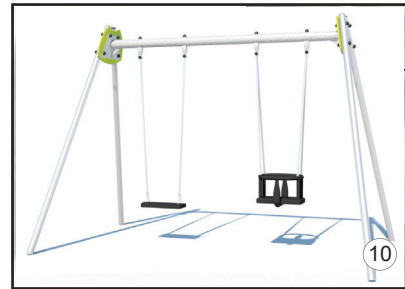
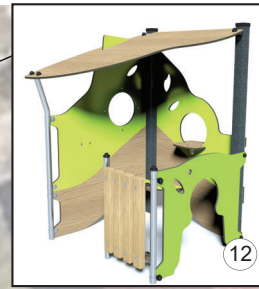


PLAYGROUND ELEMENTS



PROLUDIC SWING - JUNIOR TODDLER J473



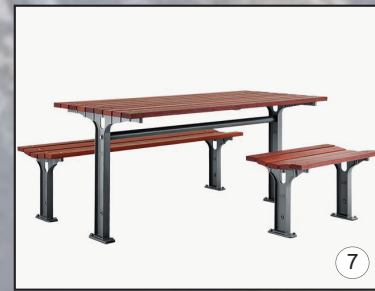
PROLUDIC PLAYHOUSE J222



PROLUDIC DIABOLO BABY J38706-C



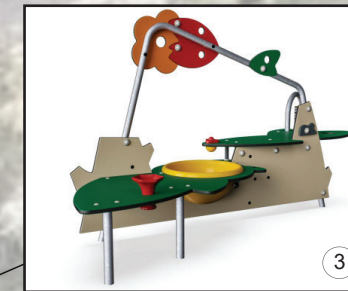
WILLPLAY LITTLE TOWN SERVICE STATION LT-019



STREET FURNITURE AUSTRALIA - DDA TABLE AND BENCH PICNIC SETTING



STREET FURNITURE AUSTRALIA - PLATFORM



KOMPAN - SAND AND WATER WORK STATION MSC5419

PROJECT DESCRIPTION

Hawkins Hall accommodates a number of user groups. Two of the key user groups are playgroups and general park users due to the lack of playground facilities in the local area. Therefore the playground is targeted to focus on the 1-6 age range.

The project celebrates the two existing trees on site ensuring there is enough offset from these items and utilising tree protection measures such as permeable paving and mulched gardenbeds.

The new playground extends the sandpit into a more informal layout with a central sand play table.

Elements within the playground have been selected to ensure sightlines across the park and to provide easy access for the nominated age range.

Imaginative play is encouraged with a non-prescriptive thematic for the playground and opportunities for role playing with the petrol station ptt stop along the extended trike track.

New amenities and a storeroom are to be consolidated to the rear of Hawkins Hall.

The entry experience has been improved with a relocated entry gate and entry walls. Pram parking is located to the right of the entry.

An accessible ramp extends onto a generous deck with built in seating to the front of Hawkins Hall.

Seating platforms have been sited to aid supervision and to double as informal picnic areas

KEY

1. Relocated pedestrian entry gate with entry walls
2. Pram parking on synthetic turf
3. Sandpit with play table. Synthetic turf surround
4. Shade covers retained with new sails
5. Deck with built in seating with backrest and arm rests
6. Seating platforms
7. Picnic table with privacy wall
8. Central lawn
9. Petrol station ptt stop on new trike circuit
10. Swing set with toddler and standard swing
11. Entry wall and signage
12. Cubby house
13. Slide and tunnel play structure
14. New amenity facility and store room
15. Hawkins Hall
16. Permeable pavement around tree



LANDMARK - CUSTOMISED CARETAKER RANGE

Parks, Trees and Recreation Branch

Hornsby Shire Council
296 Peats Ferry Road, Hornsby
PO Box 37, Hornsby NSW 1630

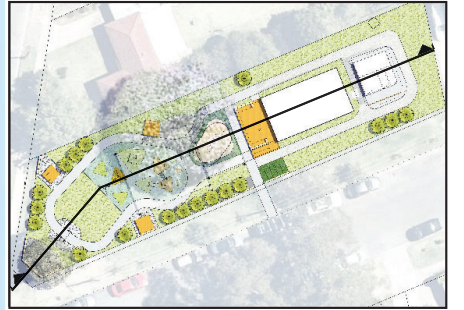
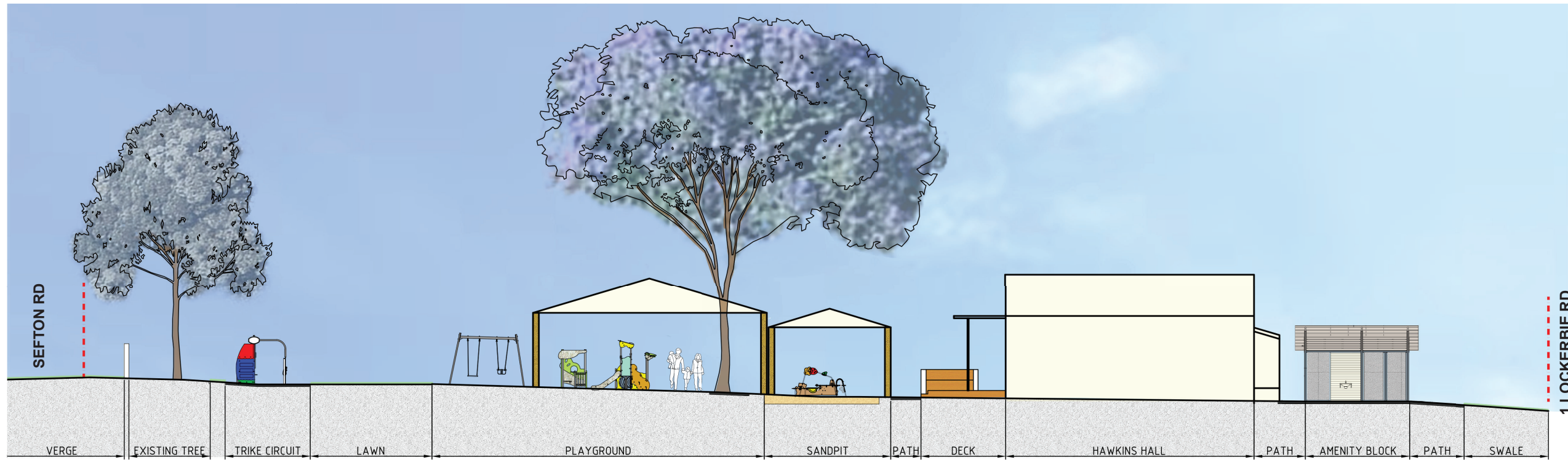
Telephone 9847 6666
8.30am - 5pm Mon-Fri

hornsby.nsw.gov.au

HAWKINS HALL
SEFTON ROAD, THORNLEIGH
LANDSCAPE CONCEPT PLAN
MARCH 1ST 2022



SECTION



SUBMISSIONS

If you wish to provide comments on the Landscape Concept Plan please title your submission 'Hawkins Hall Landscape Concept Plan' and email: hsc@hornsby.nsw.gov.au

Submissions close 5pm Friday 18th March 2022

ENQUIRIES

Please direct enquiries to:

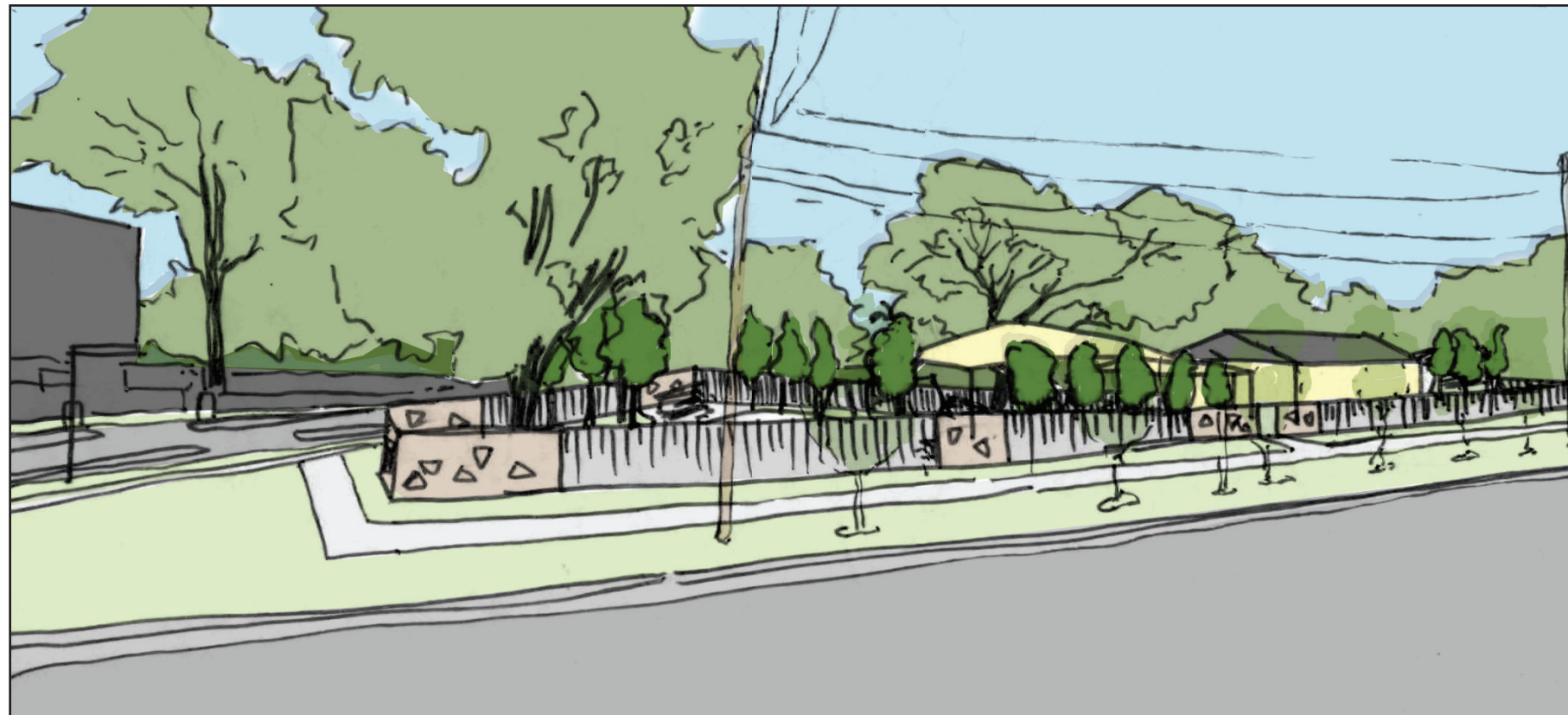
Katie Leung

Project Landscape Architect /
Project Manager

Tel. 02 9847 6893

Email: kleung@hornsby.nsw.gov.au

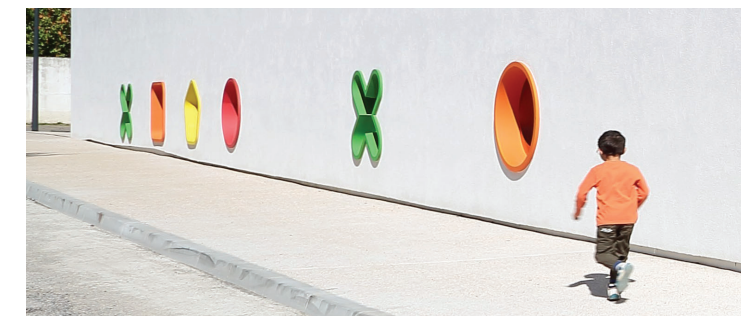
ARTIST IMPRESSION



A new boundary fence will incorporate wall portions to improve the sense of enclosure at seating locations. These portions of the fenceline also provide opportunities for playful window type elements as demonstrated in the precedent images.

The fencing elements inbetween these walls allow for passive surveillance.

Additional tree plantings will improve the microclimate and will define the spaces within the playground.



Parks, Trees and Recreation Branch

Hornsby Shire Council
296 Peats Ferry Road, Hornsby
PO Box 37, Hornsby NSW 1630

Telephone 9847 6666
8.30am - 5pm Mon-Fri

hornsby.nsw.gov.au

HAWKINS HALL
SEFTON ROAD, THORNLEIGH
LANDSCAPE CONCEPT PLAN
MARCH 1ST 2022

