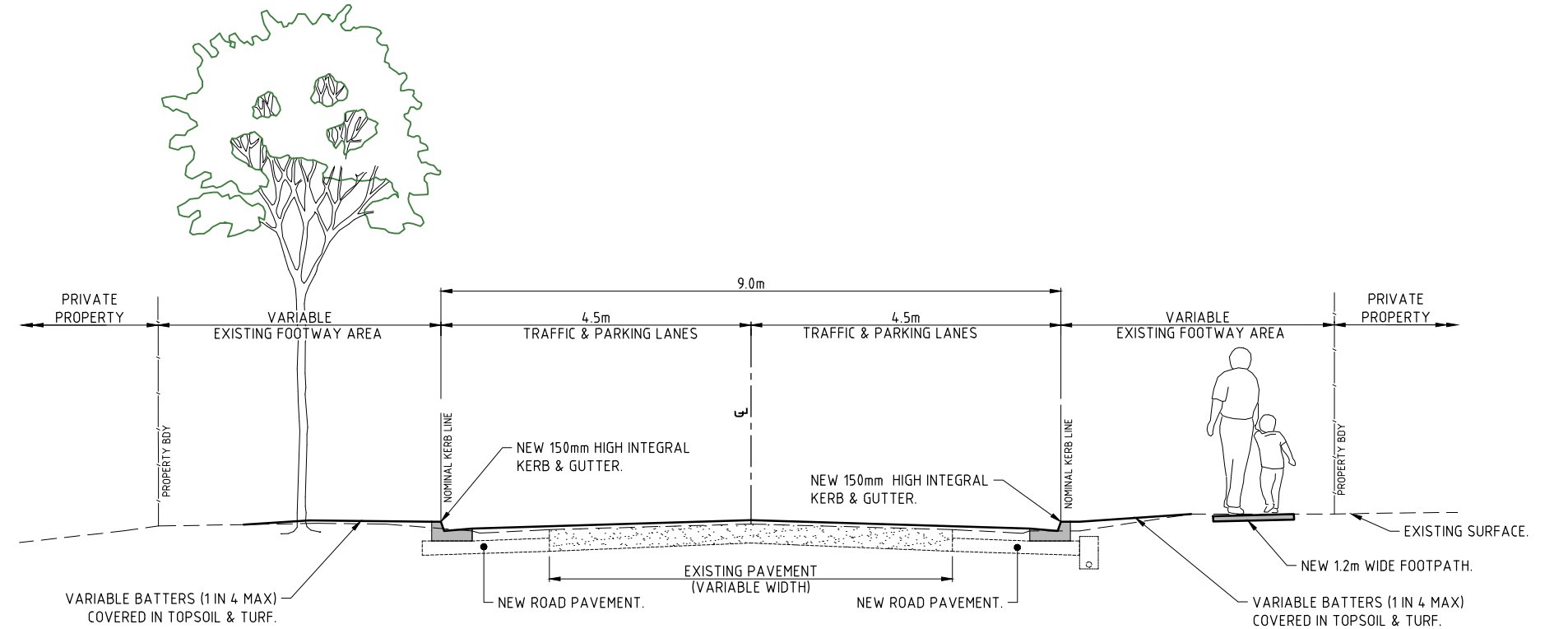


PLAN

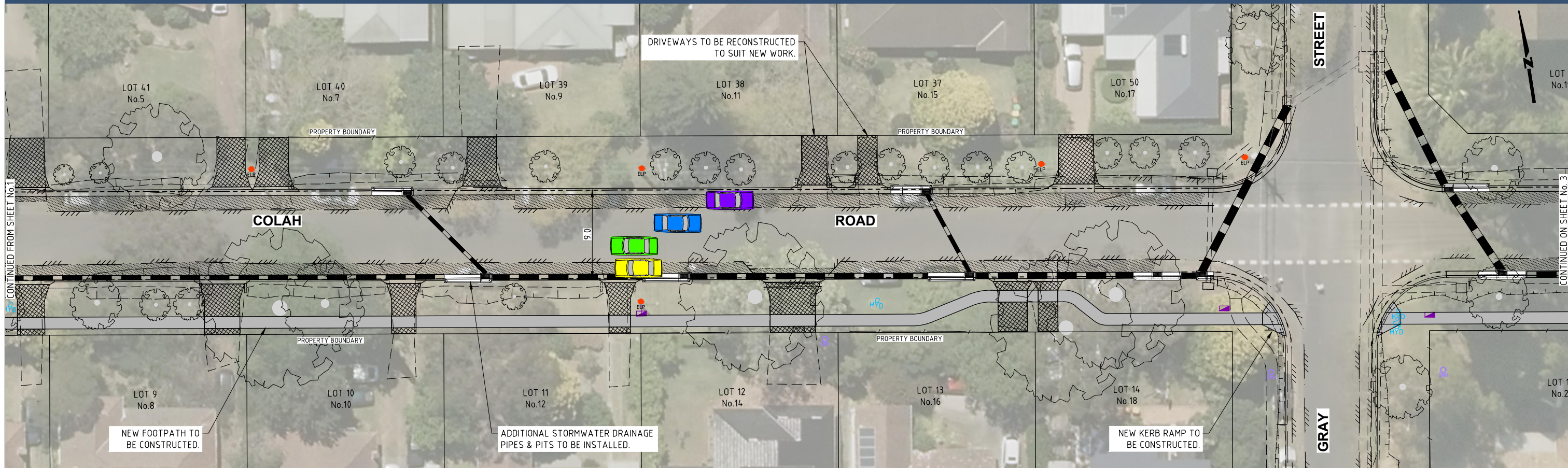
LEGEND

- EXISTING KERB & GUTTER.
- EXISTING FENCE.
- EXISTING CONCRETE PATH EDGE.
- EXISTING 115mm RCP.
- EXISTING TREE.
- EXISTING TREE TO BE REMOVED.
- PROPOSED KERB & GUTTER.
- PROPOSED STORMWATER PIPE.
- PROPOSED STORMWATER INLET PIT.
- EXTENT OF NEW PAVEMENT CONSTRUCTION (REFER TO TYPICAL SECTION ON SHEET No.2 FOR DETAILS).
- EXTENT OF DRIVEWAY RECONSTRUCTION REINSTATED WITH EXISTING OR MATCHING MATERIALS UNLESS NOTED OTHERWISE.
- EXTENT OF NEW FOOTPATH CONSTRUCTION. ALL PATHS N25 CONCRETE 80mm THICK (COLOUR: PLAIN CONCRETE)



TYPICAL CROSS SECTION NOT TO SCALE

PRELIMINARY NOT FOR CONSTRUCTION ISSUED FOR INFORMATION ONLY



PLAN

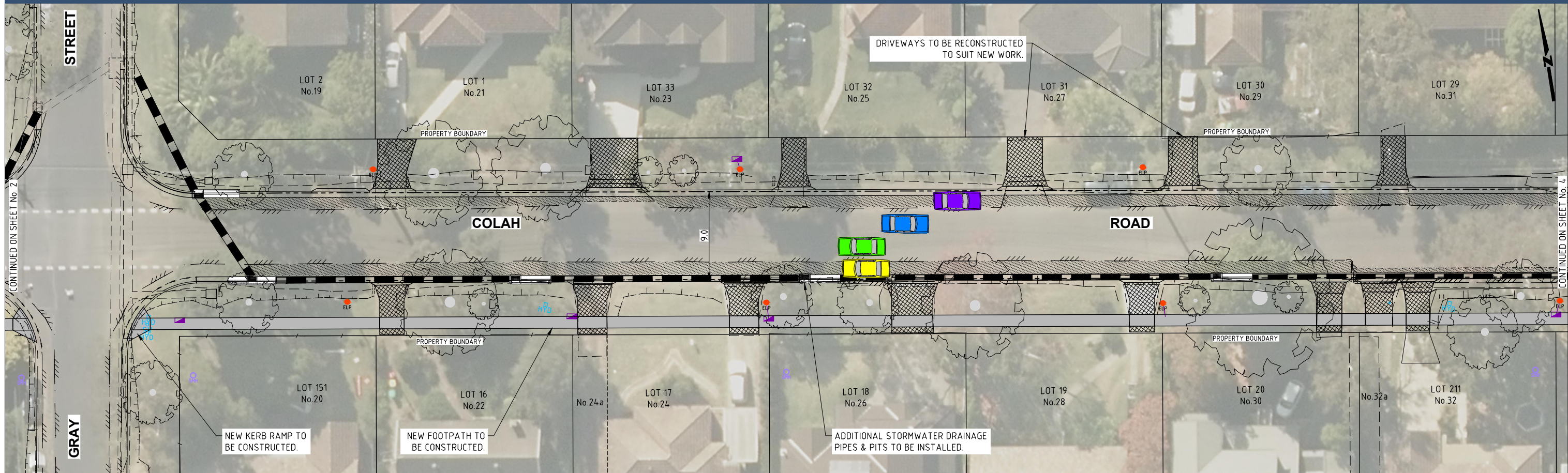


COLAH ROAD
LOOKING EAST FROM OPPOSITE No. 3



COLAH ROAD
LOOKING EAST FROM OPPOSITE No. 9

PRELIMINARY
NOT FOR CONSTRUCTION
ISSUED FOR INFORMATION ONLY



PLAN

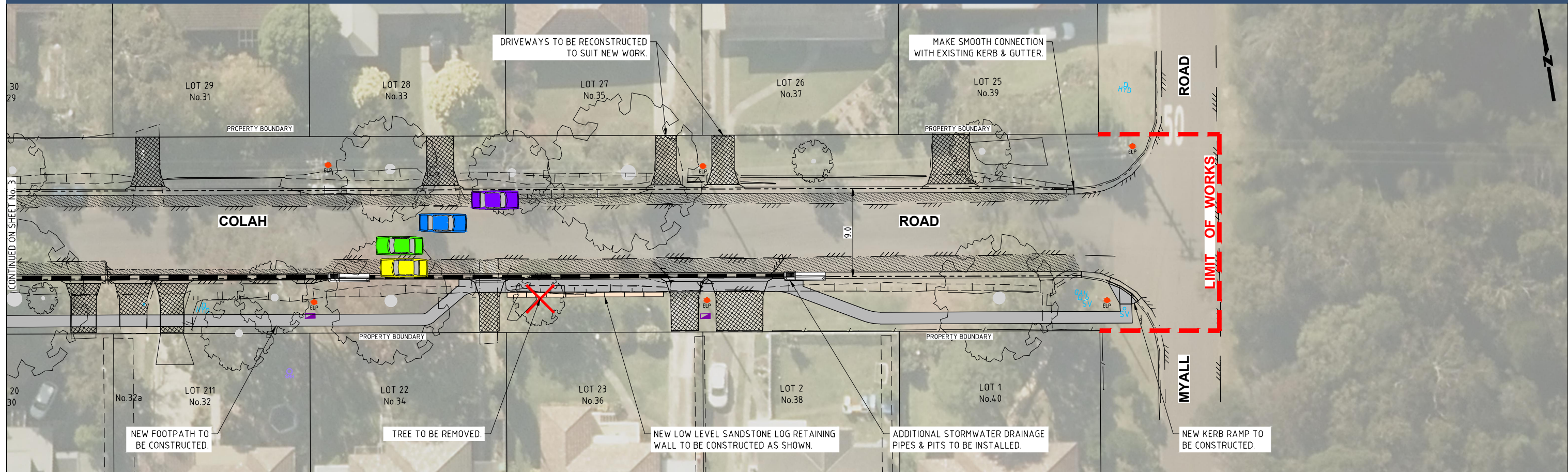


COLAH ROAD
LOOKING EAST FROM OPPOSITE No.15

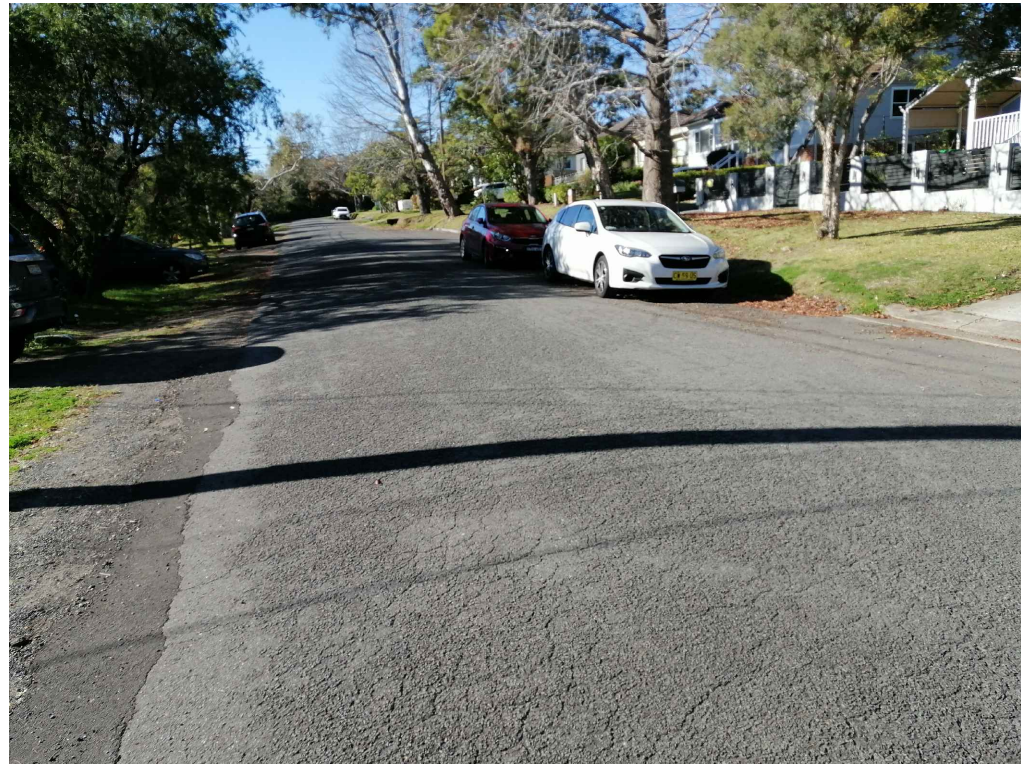


COLAH ROAD
LOOKING EAST FROM OPPOSITE No.19

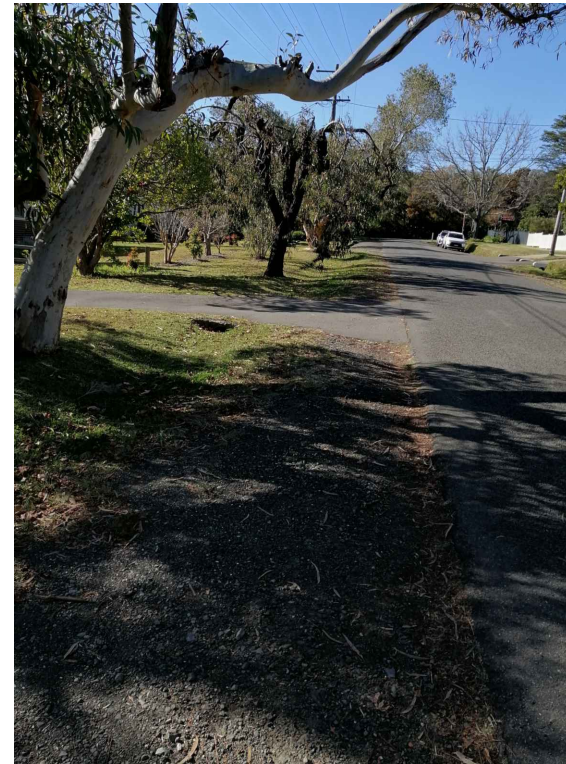
PRELIMINARY
NOT FOR CONSTRUCTION
ISSUED FOR INFORMATION ONLY



PLAN



COLAH ROAD
LOOKING EAST FROM OPPOSITE No.27



COLAH ROAD
LOOKING EAST FROM OPPOSITE No.33

PRELIMINARY
NOT FOR CONSTRUCTION
ISSUED FOR INFORMATION ONLY