

OLD BEECROFT ROAD, CHELTENHAM PROPOSED ROAD RECONSTRUCTION BEECROFT ROAD TO No.26

LEGEND

| | |
|--|--|
| | EXISTING KERB & GUTTER. |
| | EXISTING FENCE. |
| | EXISTING CONCRETE PATH EDGE. |
| | EXISTING DRAINAGE STORM WATER PIPES. |
| | EXISTING POWER POLE. |
| | EXISTING SIGN. |
| | EXISTING TREE. |
| | EXISTING TREE TO BE REMOVED. |
| | SURVEY TRAVERSE STATIONS. |
| | STATE SURVEY MARKS/PERMANENT MARKS. |
| | SURVEY REFERENCE MARKS - DRILL HOLE & WING. |
| | EXISTING FIRE HYDRANT. |
| | EXISTING WATER STOP VALVE. |
| | EXISTING TELSTRA PIT. |
| | EXISTING SEWER MANHOLE. |
| | EXISTING GAS MAIN. |
| | EXISTING U/G TELSTRA CABLES. |
| | EXISTING OVERHEAD ELECTRICAL CABLES. |
| | EXISTING UNDERGROUND ELECTRICAL CABLES. |
| | EXISTING WATER MAIN. |
| | EXISTING SEWER MAIN. |
| | PROPOSED KERB & GUTTER. |
| | NEW BROOMED FINISH 25MPa CONCRETE ISLAND INFILL (COLOUR: TERRACOTTA). |
| | EXTENT OF NEW PAVEMENT CONSTRUCTION. (REFER TO TYPICAL SECTION FOR DETAILS). |
| | NEW CONCRETE FOOTPATH. 100mm THICK N25 (COLOUR: PLAIN CONCRETE) |
| | EXTENT OF PAVEMENT PROFILING TO SUIT FINISHED DESIGN LEVELS. |
| | EXTENT OF DRIVEWAY RECONSTRUCTION REINSTATED WITH EXISTING OR MATCHING MATERIALS UNLESS NOTED OTHERWISE. |

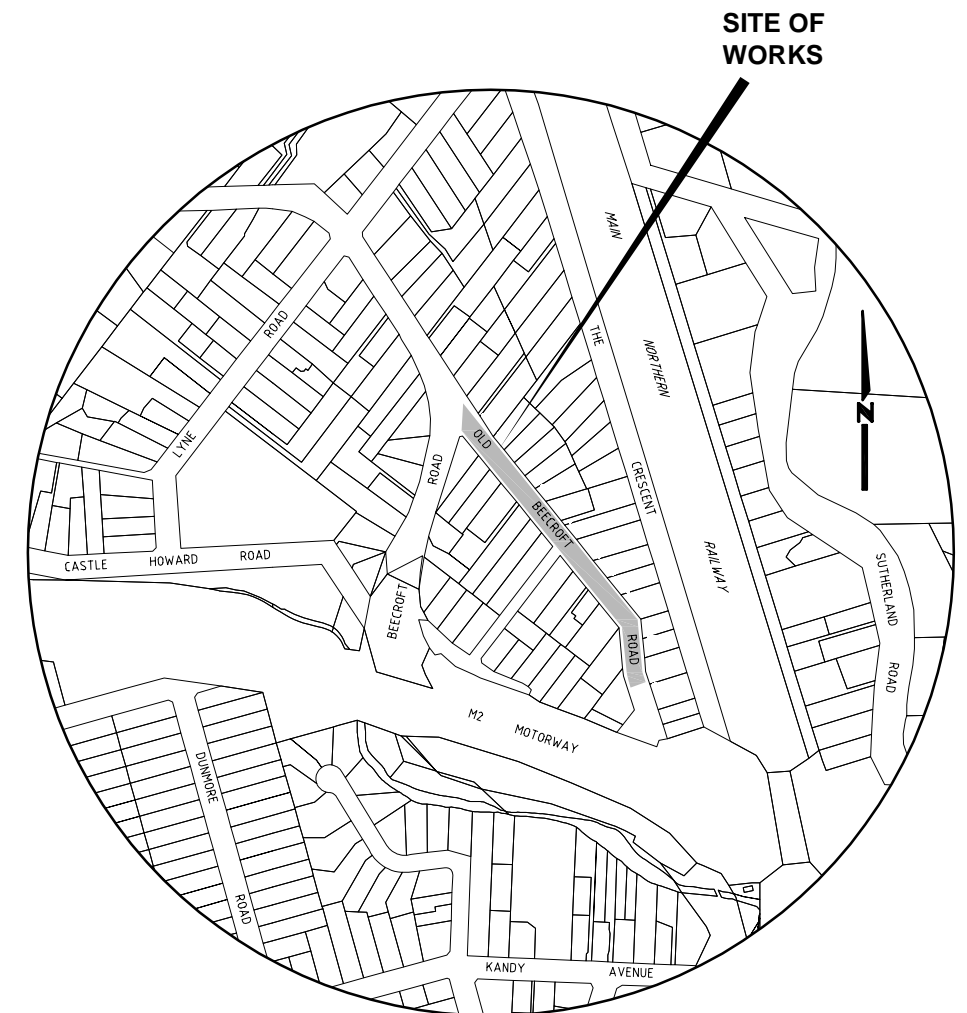
| DRAWING SCHEDULE | | |
|------------------|--|-------|
| SHEET No. | TITLE | ISSUE |
| 1 | DRAWING SCHEDULE, LOCALITY PLAN, LEGEND & GENERAL NOTES. | 1 |
| 2 | TYPICAL SECTION & NEW ROAD PAVEMENT DETAILS & RETAINING WALL DETAIL. | 1 |
| 3 | OVERALL LAYOUT PLAN. | 1 |
| 4 | CONTROL LINE SETOUT DETAILS. | 1 |
| 5 | GENERAL WORKS & SERVICES PLAN & LONG SECTION - SHEET 1 OF 3. | 1 |
| 6 | GENERAL WORKS & SERVICES PLAN & LONG SECTION - SHEET 2 OF 3. | 1 |
| 7 | GENERAL WORKS & SERVICES PLAN & LONG SECTION - SHEET 3 OF 3. | 1 |
| 8 | CROSS SECTIONS - CH10.000 TO CH100.000. | 1 |
| 9 | CROSS SECTIONS - CH110.000 TO CH220.000. | 1 |
| 10 | CROSS SECTIONS PLAN - CH226.852 TO 290.000. | 1 |
| 11 | DRIVEWAY PROFILES - SHEET 1 OF 3. | 1 |
| 12 | DRIVEWAY PROFILES - SHEET 2 OF 3. | 1 |
| 13 | DRIVEWAY PROFILES - SHEET 3 OF 3. | 1 |
| 14 | PEDESTRIAN REFUGE ISLAND SETOUT DETAILS & TYPICAL SECTION. | 1 |
| 15 | SIGNS & LINE MARKING PLAN. | 1 |

GENERAL NOTES:

- ALL WORKS TO BE CARRIED OUT IN ACCORDANCE WITH THE REQUIREMENTS & SPECIFICATIONS OF HORNSBY SHIRE COUNCIL.
- LEVELS SHALL BE OBTAINED FROM ESTABLISHED BENCH MARKS & NOT FROM SURVEY PEGS.
- PROVIDE TRAFFIC MANAGEMENT, LINE MARKING & SIGNAGE IN ACCORDANCE WITH THE ROADS & MARITIME SERVICES "TRAFFIC CONTROL AT WORK SITES" TECHNICAL MANUAL & AS1742.3 REQUIREMENTS.
- SERVICES SHOWN ON THESE PLANS HAVE BEEN LOCATED FROM INFORMATION SUPPLIED FROM THE RELEVANT AUTHORITIES VIA A "DIAL BEFORE YOU DIG" ENQUIRY. THE LOCATION OF SERVICES SHOWN ON THESE DRAWINGS HAVE BEEN PLOTTED AS POSSIBLE FROM DIAGRAMS PROVIDED BY SERVICE AUTHORITIES & FIELD INVESTIGATIONS & ARE TO BE VERIFIED PRIOR TO CONSTRUCTION.
- EROSION & SEDIMENT CONTROL MEASURES ARE TO BE INSTALLED IN ACCORDANCE WITH THE LANDCOM PUBLICATION-- "MANAGING URBAN STORMWATER, SOILS & CONSTRUCTION" Vol. 1, 4th EDITION.
- ALL DISTURBED AREAS OF THE SITE ARE TO BE REINSTATED WITH EXISTING OR MATCHING MATERIALS UNLESS NOTED OTHERWISE AT THE COMPLETION OF THE WORKS.
- ARRANGE SET-OUT BY HORNSBY SHIRE COUNCIL DESIGN & CONSTRUCTION BRANCH SURVEYORS. NOTIFY SENIOR ENGINEERING SURVEYOR A MINIMUM OF 24 HOURS IN ADVANCE.
- WHERE PAVEMENT RESURFACING IS UNDERTAKEN ENSURE ALL BLUE HYDRANT MARKER RRPMS ARE REINSTATED AT THE COMPLETION OF WORKS.

SUBSOIL DRAINAGE NOTES:

- SUBSOIL DRAINAGE TO BE INSTALLED AS DIRECTED BY SUPERVISING CONSTRUCTION ENGINEER.
- SUBSOIL FLUSHING POINTS TO BE INSTALLED AT ALL U/S ENDS OF LINES & AT 60m MAXIMUM CENTRES. CONNECT SUBSOIL PIPES TO STORMWATER PITS & MANHOLES.



LOCALITY PLAN
NOT TO SCALE

**Hornsby Shire Council
Design & Construction
Branch**

TELEPHONE: (02) 9847 6666
EMAIL: hsc@hornsby.nsw.gov.au
Authorised for release - Manager Design & Construction
Name: R. RAJCA Signed: Date:

Designer
D. TAMANG
Signed:
Drawn
D. TAMANG
Signed:
Surveyor
T. PELL
Project Identifier\ACAD File Name
H:\Old Beecroft Road_LR_100188\Design\ACAD\Old Beecroft Rd.dwg
TRM Document Number
XXXXXXXXXXXX

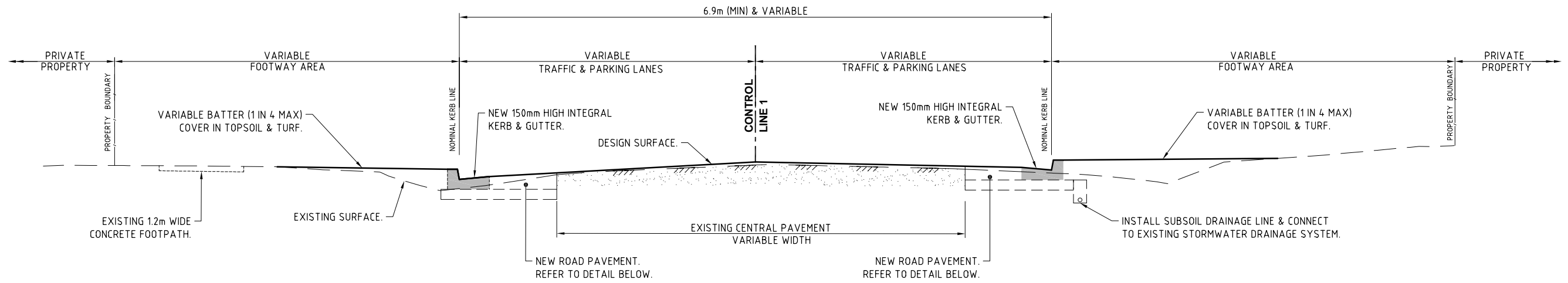
| Design Checked-Design Team Leader | Signed: | Field Book | Level Book | AHD Datum |
|-----------------------------------|-------------------------|------------|------------|-----------|
| | | | | |
| | | | | |
| | | | | |
| 1 | ISSUED FOR CONSTRUCTION | | M. DRAKE | |
| Issue | Description | Name | Initial | Date |
| | | | | |

Bar Scales
NOT TO SCALE
DRAFT
not for construction
HORNSBY SHIRE COUNCIL
PO BOX 37, HORNSBY NSW 1630

**OLD BEECROFT ROAD, CHELTENHAM
ROAD RECONSTRUCTION
BEECROFT ROAD TO No.26**

DRAWING SHCHEDULE, LOCALITY PLAN, LEGEND
& GENERAL NOTES.

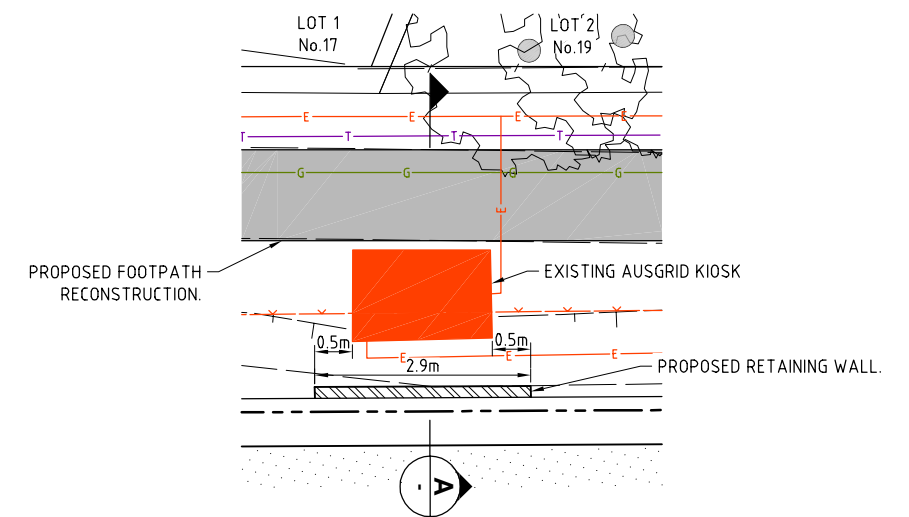
| ASSET MANAGEMENT & MAINTENANCE BRANCH | | |
|---|---------------------|----|
| Senior Maintenance Engineer | | |
| Name A BOYD | Telephone 9847 6672 | |
| Accepted as complying with the general intent of the design brief | | |
| Signed: | Date: | |
| Project Number | 100188 | |
| Sheet of | 1 | 15 |
| Issue | 1 | |
| HSC Drawing Number | 1151.1 | |



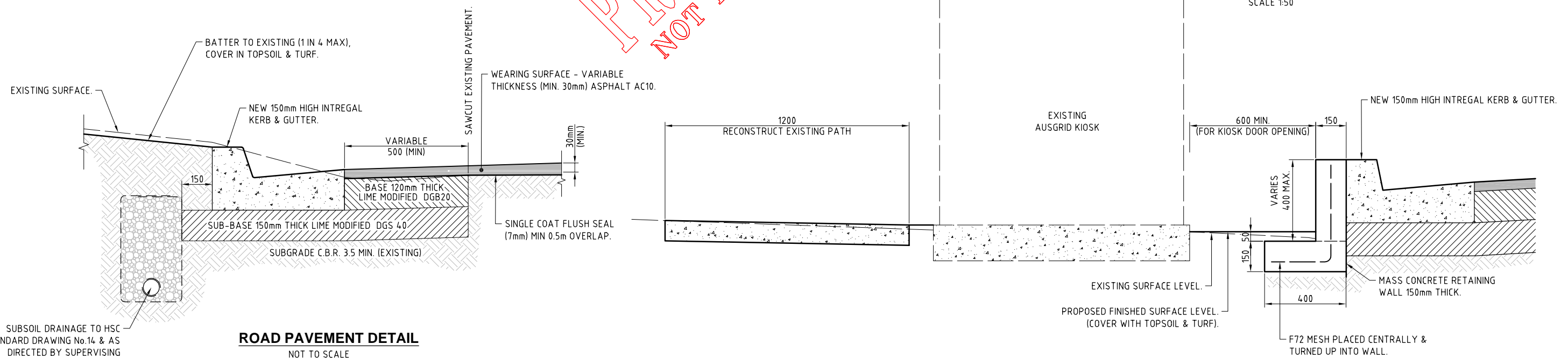
TYPICAL CROSS SECTION - CL1
NOT TO SCALE

ASPHALT COURSE & LAYER THICKNESS TABLE

| NOMINAL SIZE OF ASPHALT (mm) | COMPACTED LAYER THICKNESS (mm) | TYPE OF WORK |
|------------------------------|--------------------------------|-------------------|
| 10 | 30 TO 45 | WEARING COURSE |
| 10 | 20 TO 45 | CORRECTIVE COURSE |
| 14 | 30 TO 55 | CORRECTIVE COURSE |
| 20 | 40 TO 90 | CORRECTIVE COURSE |



DETAIL PLAN-1
SCALE 1:50



ROAD PAVEMENT DETAIL
NOT TO SCALE

RETAINING WALL DETAIL

SECTION A
SCALE 1:10

Hornsby Shire Council
Design & Construction
Branch

| | | | |
|--|-----------------------------------|-------------------------|----------|
| Designer D. TAMANG | Design Checked-Design Team Leader | | |
| Drawn D. TAMANG | Signed: | | |
| Surveyor T. PELL | NA | NA | AHD |
| Project Identifier\CAD File Name | Field Book | Level Book | Datum |
| H:\Old Beecroft Road_LR_100188\Design\ACAD\Old Beecroft Rd.dwg | | | |
| TRM Document Number | 1 | ISSUED FOR CONSTRUCTION | M. DRAKE |
| | Issue | Description | Name |
| | | | Initial |
| | | | Date |

Authorised for release - Manager Design & Construction
Name: R. RAJCA Signed: Date:

Design not to be amended without authorisation by Manager Design & Construction

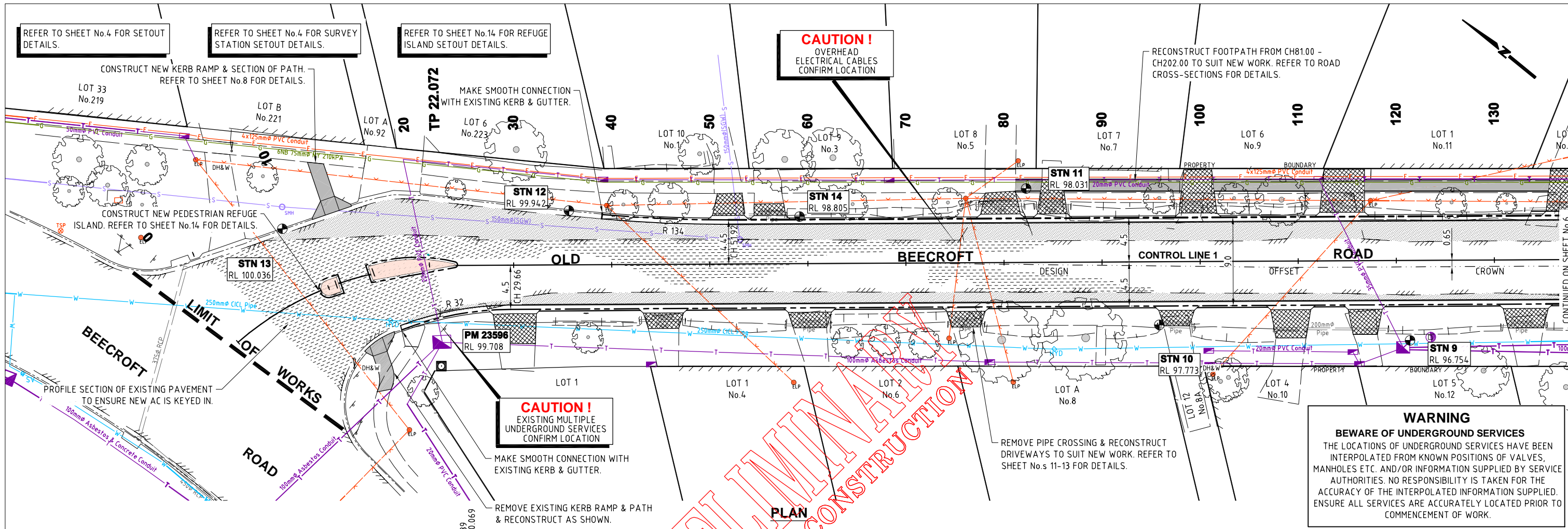
Bar Scales
NOT TO SCALE
DO NOT SCALE. USE FIGURED DIMENSIONS ONLY

DRAFT
not for construction
HORNSBY SHIRE COUNCIL
PO BOX 37, HORNSBY NSW 1630

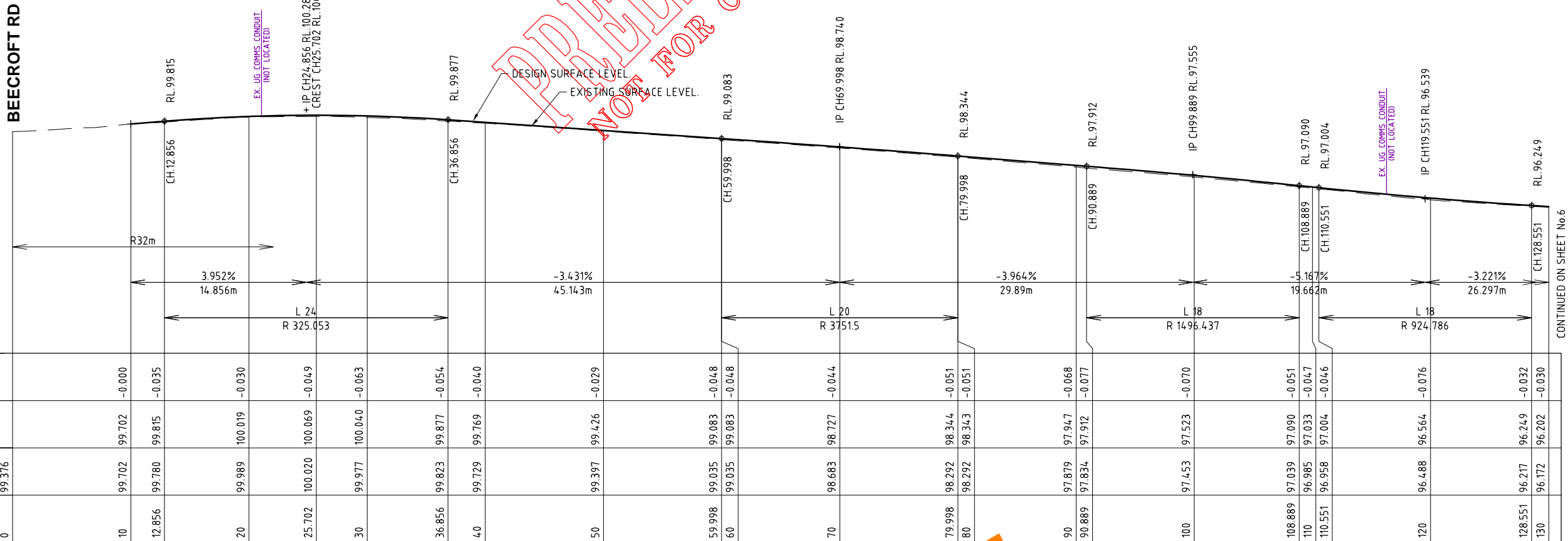
OLD BEECROFT ROAD, CHELTENHAM
ROAD RECONSTRUCTION
BEECROFT ROAD TO No.26

TYPICAL SECTION & NEW ROAD PAVEMENT DETAILS
& RETAINING WALL DETAIL.

| | | |
|--------------------|--------|----|
| Project Number | 100188 | |
| Sheet of | 2 | 15 |
| Issue | 1 | |
| HSC Drawing Number | 1151.1 | |



PLAN



LONGITUDINAL SECTION - CL1

Hornsby Shire Council
 Design & Construction
 Branch

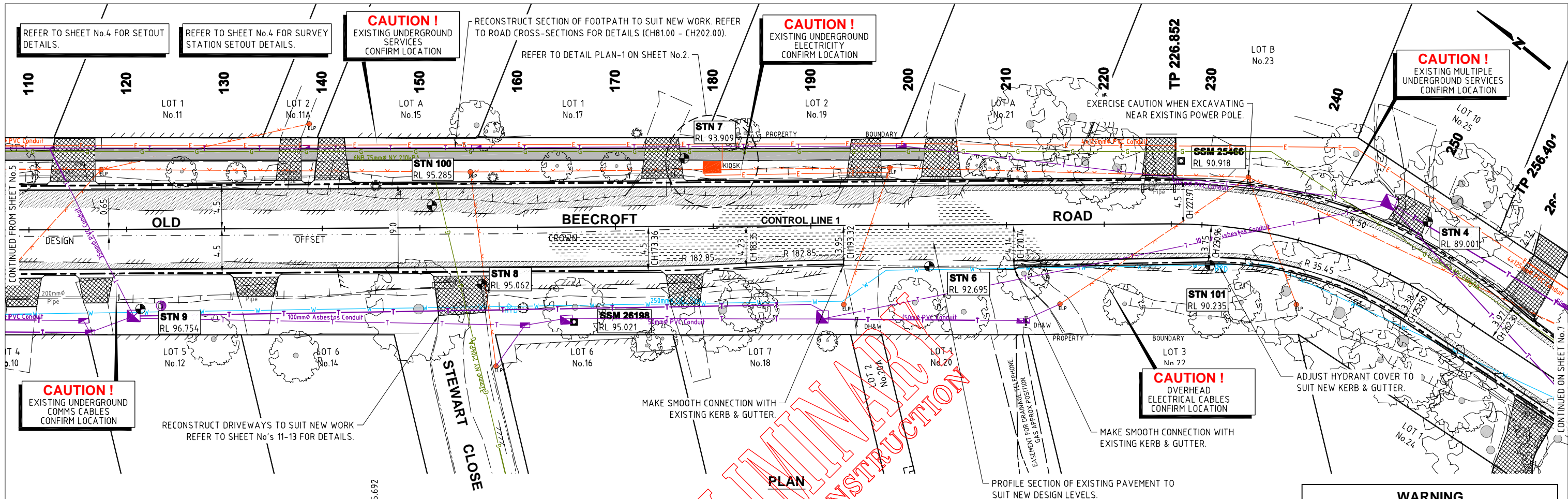
Designer: D. TAMANG
 Drawn: D. TAMANG
 Surveyor: T. PELL
 Project Identifier: \CAD File Name
 H:\Old Beecroft Road_LR_100188\Design\ACAD\Old Beecroft Rd.dwg
 TRM Document Number

| Issue | Description | Name | Initial | Date |
|-------|-------------------------|----------|---------|------|
| 1 | ISSUED FOR CONSTRUCTION | M. DRAKE | | |

Bar Scales
 SCALE 1:200 @ A1
DRAFT
 not for construction
HORNSBY SHIRE COUNCIL
 PO BOX 37, HORNSBY NSW 1630

OLD BEECROFT ROAD, CHELTENHAM ROAD RECONSTRUCTION
 BEECROFT ROAD TO No.26
 GENERAL WORKS & SERVICES PLAN & LONG SECTION.
 SHEET 1 OF 3.

Project Number: 100188
 Sheet of: 5 15 Issue: 1
 HSC Drawing Number: 1151.1



DRAFT
 NOT FOR CONSTRUCTION

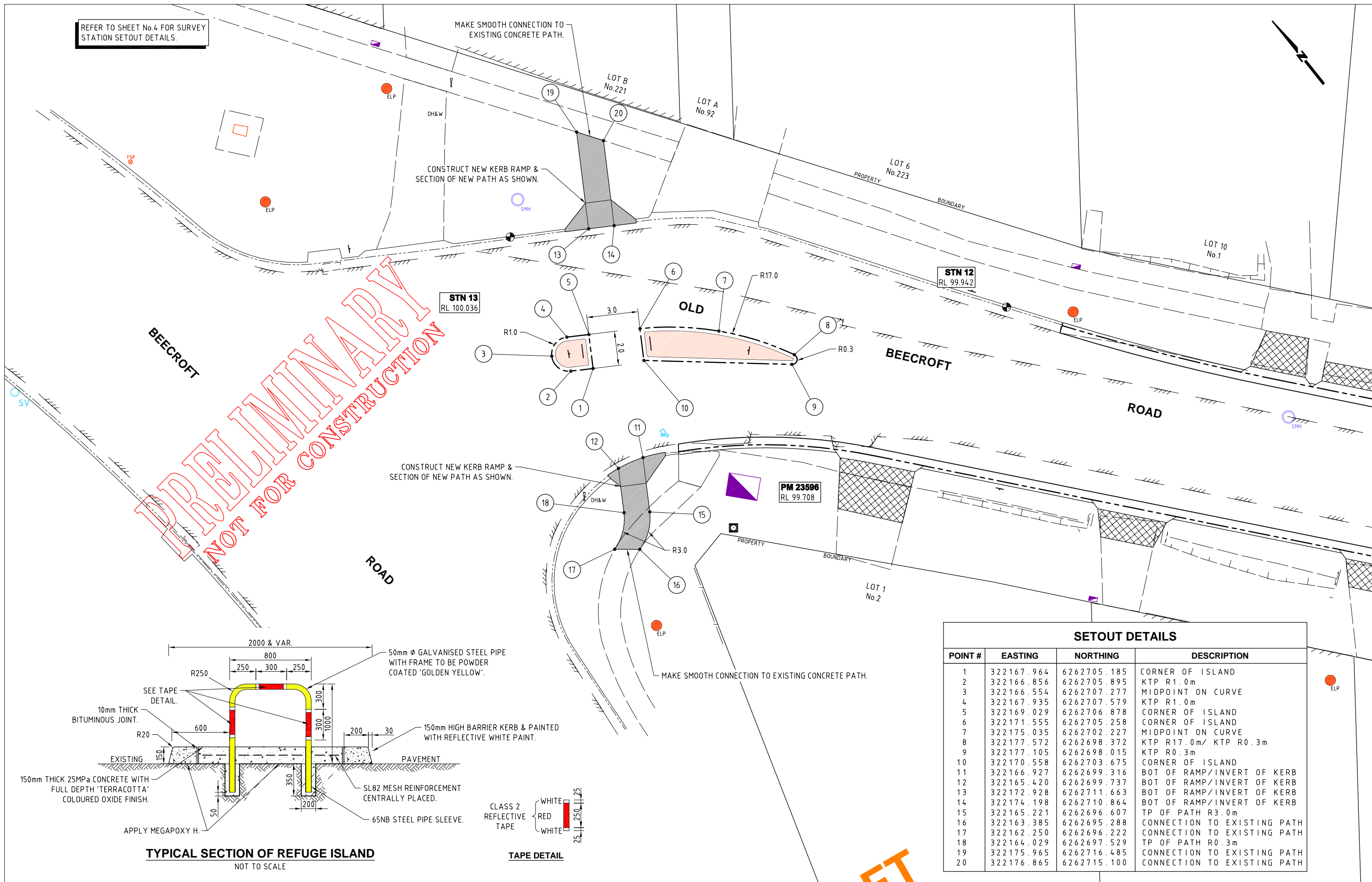
WARNING
BEWARE OF UNDERGROUND SERVICES
 THE LOCATIONS OF UNDERGROUND SERVICES HAVE BEEN INTERPOLATED FROM KNOWN POSITIONS OF VALVES, MANHOLES ETC. AND/OR INFORMATION SUPPLIED BY SERVICE AUTHORITIES. NO RESPONSIBILITY IS TAKEN FOR THE ACCURACY OF THE INTERPOLATED INFORMATION SUPPLIED. ENSURE ALL SERVICES ARE ACCURATELY LOCATED PRIOR TO COMMENCEMENT OF WORK.

| CUT / FILL DEPTH TO EXISTING | CONTROL LINE FINISHED LEVEL | EXISTING SURFACE LEVEL | CONTROL LINE CHAINAGE | Horizontal Geometry Data | | Vertical Geometry Grade (%) | | Vertical Curve Length (m) | | Vertical Curve Radius (m) | |
|------------------------------|-----------------------------|------------------------|-----------------------|--------------------------|------------|-----------------------------|------------|---------------------------|------------|---------------------------|--|
| | | | | Grade (%) | Length (m) | Length (m) | Radius (m) | Length (m) | Radius (m) | | |
| -0.030 | 96.202 | 96.172 | 130 | -3.221% | 26.297m | | | | | | |
| -0.033 | 96.014 | 95.981 | 135.848 | | | | | | | | |
| -0.031 | 95.877 | 95.846 | 140 | | | | | | | | |
| -0.033 | 95.518 | 95.485 | 150 | | | | | | | | |
| -0.048 | 95.289 | 95.241 | 155.848 | | | | | | | | |
| -0.044 | 95.121 | 95.077 | 160 | | | | | | | | |
| -0.035 | 94.753 | 94.718 | 169.126 | | | | | | | | |
| -0.038 | 94.717 | 94.679 | 170 | | | | | | | | |
| -0.031 | 94.231 | 94.200 | 180 | | | | | | | | |
| -0.065 | 93.605 | 93.540 | 190 | | | | | | | | |
| -0.064 | 93.305 | 93.241 | 194.126 | | | | | | | | |
| -0.039 | 92.862 | 92.823 | 200 | | | | | | | | |
| -0.032 | 92.107 | 92.075 | 210 | | | | | | | | |
| -0.084 | 91.352 | 91.268 | 220 | | | | | | | | |
| -0.124 | 90.598 | 90.474 | 230 | | | | | | | | |
| -0.150 | 89.843 | 89.693 | 240 | | | | | | | | |
| -0.158 | 89.088 | 88.930 | 250 | | | | | | | | |

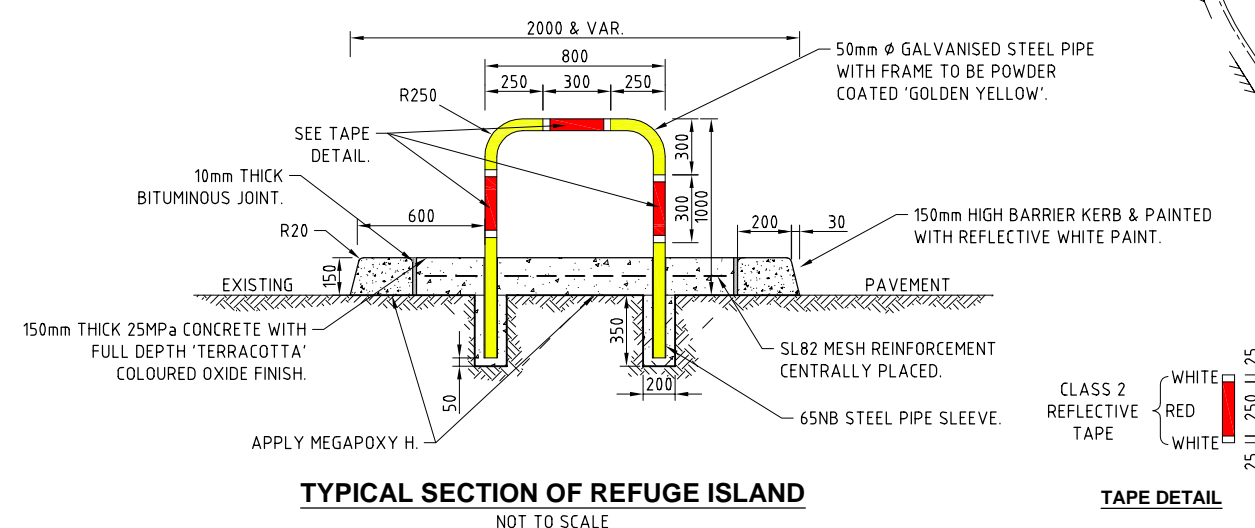
LONGITUDINAL SECTION - CL1

| | | | | | | | | | | | | |
|--|---|---|---|---|--|------------------------------|-------------------------------------|--|-------------------------|------------------|---------------|--|
| Hornsby Shire Council Design & Construction Branch Telephone: (02) 9847 6666 Email: hsc@hornsby.nsw.gov.au Authorised for release - Manager Design & Construction Name: R. RAJCA | Designer D. TAMANG Signed: _____ | Design Checked-Design Team Leader Signed: _____ | Drawn D. TAMANG Signed: _____ | Surveyor T. PELL Signed: _____ | Project Identifier \ CAD File Name H:\Old Beecroft Road_LR_100188\Design\ACAD\Old Beecroft Rd.dwg | TRM Document Number _____ | Issue 1 | Description ISSUED FOR CONSTRUCTION | Name M. DRAKE | Initial _____ | Date _____ | |
| | Bar Scales SCALE 1:200 @ A1 DO NOT SCALE. USE FIGURED DIMENSIONS ONLY. | DRAFT not for construction HORNSBY SHIRE COUNCIL PO BOX 37, HORNSBY NSW 1630 | OLD BEECROFT ROAD, CHELTENHAM ROAD RECONSTRUCTION BEECROFT ROAD TO No.26 GENERAL WORKS & SERVICES PLAN & LONG SECTION. SHEET 2 OF 3. | Project Number 100188 | Sheet of 6 15 | Issue 1 | HSC Drawing Number 1151.1 | | | | | |
| | Design not to be amended without authorisation by Manager Design & Construction | | | | | | | | | | | |
| | Design not to be amended without authorisation by Manager Design & Construction | | | | | | | | | | | |

REFER TO SHEET No.4 FOR SURVEY STATION SETOUT DETAILS.



PRELIMINARY
NOT FOR CONSTRUCTION



| SETOUT DETAILS | | | |
|----------------|------------|-------------|-----------------------------|
| POINT # | EASTING | NORTHING | DESCRIPTION |
| 1 | 322167.964 | 6262705.185 | CORNER OF ISLAND |
| 2 | 322166.856 | 6262705.895 | KTP R1.0m |
| 3 | 322166.554 | 6262707.277 | MIDPOINT ON CURVE |
| 4 | 322167.935 | 6262707.579 | KTP R1.0m |
| 5 | 322169.029 | 6262706.878 | CORNER OF ISLAND |
| 6 | 322171.555 | 6262705.258 | CORNER OF ISLAND |
| 7 | 322175.035 | 6262702.227 | MIDPOINT ON CURVE |
| 8 | 322177.572 | 6262698.372 | KTP R17.0m/ KTP R0.3m |
| 9 | 322177.105 | 6262698.015 | KTP R0.3m |
| 10 | 322170.558 | 6262703.675 | CORNER OF ISLAND |
| 11 | 322166.927 | 6262699.316 | BOT OF RAMP/INVERT OF KERB |
| 12 | 322165.420 | 6262699.737 | BOT OF RAMP/INVERT OF KERB |
| 13 | 322172.928 | 6262711.663 | BOT OF RAMP/INVERT OF KERB |
| 14 | 322174.198 | 6262710.864 | BOT OF RAMP/INVERT OF KERB |
| 15 | 322165.221 | 6262696.607 | TP OF PATH R3.0m |
| 16 | 322163.385 | 6262695.288 | CONNECTION TO EXISTING PATH |
| 17 | 322162.250 | 6262696.222 | CONNECTION TO EXISTING PATH |
| 18 | 322164.029 | 6262697.529 | TP OF PATH R0.3m |
| 19 | 322175.965 | 6262716.485 | CONNECTION TO EXISTING PATH |
| 20 | 322176.865 | 6262715.100 | CONNECTION TO EXISTING PATH |

**Hornsby Shire Council
Design & Construction
Branch**
TELEPHONE: (02) 9847 6666
EMAIL: hsc@hornsby.nsw.gov.au

| | | | | | |
|--|--|------------|-----------|------|--|
| Designer D. TAMANG | Design Checked-Design Team Leader Signed: | | | | |
| Drawn D. TAMANG | Drawing Checked Signed: | | | | |
| Surveyor T. PELL | Field Book | Level Book | AHD Datum | | |
| Project Identifier\CAD File Name H:\Old Beecroft Road_LR_100188\Design\ACAD\Old Beecroft Rd.dwg | | | | | |
| TRM Document Number | | | | | |
| 1 | ISSUED FOR CONSTRUCTION | M. DRAKE | | | |
| Issue | Description | Name | Initial | Date | |
| Design not to be amended without authorisation by Manager Design & Construction | | | | | |

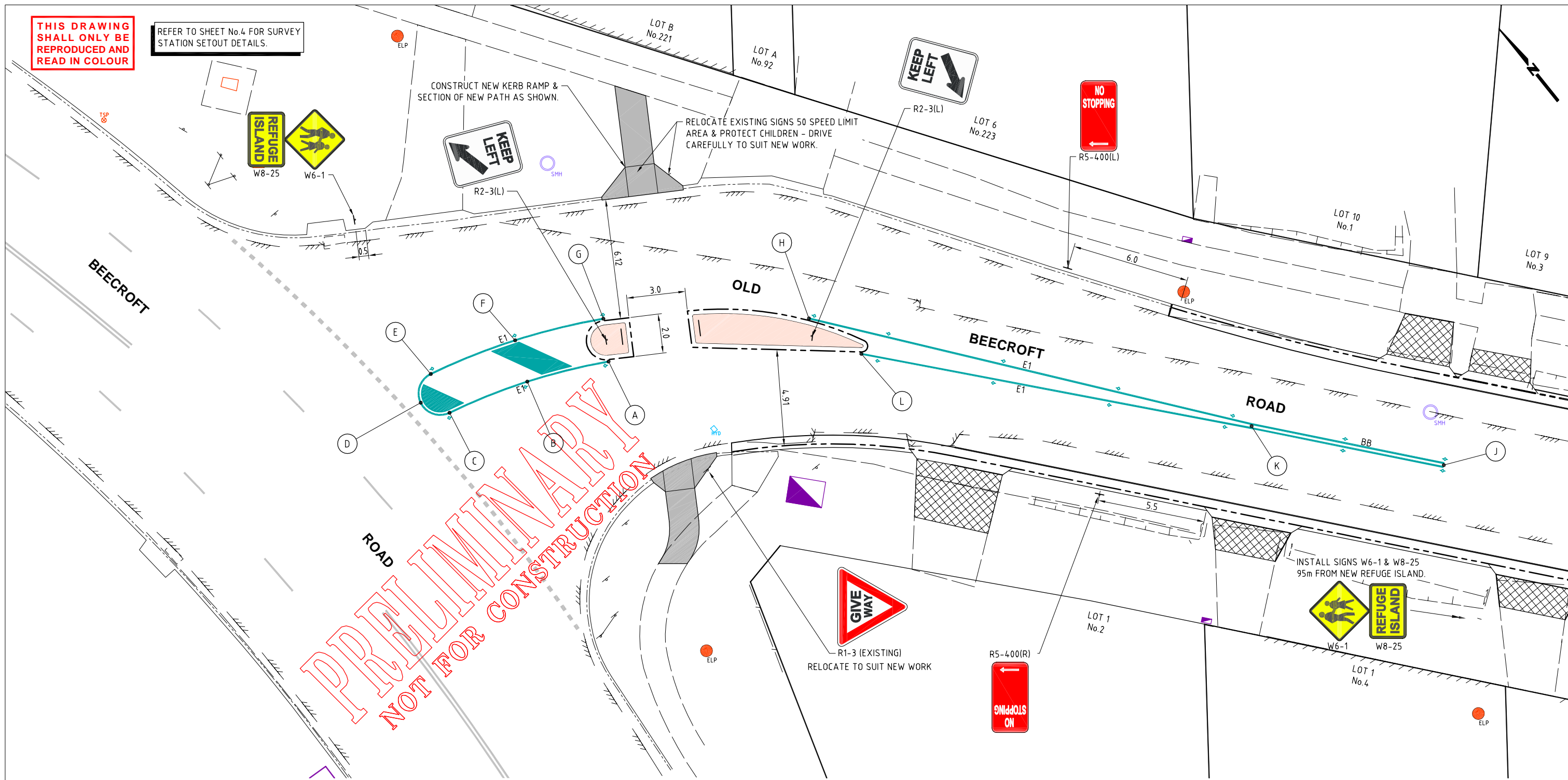
Bar Scales
SCALE 1:100 @ A1
HORNBSBY SHIRE COUNCIL
PO BOX 37, HORNBSBY NSW 1630

**OLD BEECROFT ROAD, CHELTENHAM
ROAD RECONSTRUCTION
BEECROFT ROAD TO No.26**
PEDESTRIAN REFUGE ISLAND SETOUT DETAILS,
& TYPICAL SECTION.

| | | |
|-------------------------------------|--------------------------|-------------------|
| Project Number 100188 | Sheet of 14 15 | Issue 1 |
| HSC Drawing Number 1151.1 | | |

THIS DRAWING SHALL ONLY BE REPRODUCED AND READ IN COLOUR

REFER TO SHEET No.4 FOR SURVEY STATION SETOUT DETAILS.



PRELIMINARY
 NOT FOR CONSTRUCTION

SETOUT DETAILS

| POINT | EASTING | NORTHING | DESCRIPTION |
|-------|------------|-------------|---------------------------|
| A | 322166.807 | 6262705.808 | END EDGE LINE/TP R30.86m |
| B | 322162.950 | 6262707.640 | MIDPOINT ON CURVE |
| C | 322158.877 | 6262708.923 | TP R30.86m/TP R1.10m |
| D | 322158.066 | 6262710.247 | MIDPOINT ON CURVE |
| E | 322159.391 | 6262711.059 | TP R1.10m/TP R33.055m |
| F | 322163.807 | 6262709.664 | MIDPOINT ON CURVE |
| G | 322167.985 | 6262707.666 | END EDGE LINE/TP R33.055m |
| H | 322176.107 | 6262701.038 | END EDGE LINE |
| J | 322196.419 | 6262674.749 | END BB LINES |
| K | 322190.096 | 6262682.492 | END EDGE LINE & BB LINES |
| L | 322177.031 | 6262697.947 | END EDGE LINE |

LINE MARKING LEGEND

- PROPOSED LINE MARKING.
- EXISTING LINE MARKING.
- + EXISTING SIGN.
- + NEW SIGN.
- ◆ YELLOW RRP (BI-DIRECTIONAL).
- ◇ YELLOW RRP (UNI-DIRECTIONAL).

LINE MARKING NOTES:

1. SIGNS & LINE MARKING TO BE INSTALLED IN ACCORDANCE WITH MANUAL OF UNIFORM TRAFFIC CONTROL DEVICES/ AS1742 REQUIREMENTS.
2. WHERE POSSIBLE EXISTING SIGNAGE IS TO BE CLEANED & REUSED TO SUIT NEW WORK.
3. KERB ON MEDIAN ISLAND SHALL BE PAINTED WITH REFLECTIVE WHITE PAINT.
4. TEMPORARY 'CHANGED TRAFFIC CONDITIONS AHEAD' (T1-23) SIGNS TO BE INSTALLED ON ALL APPROACHES APPROXIMATELY 100m FROM LIMIT OF WORKS (TYPICAL) AT THE COMMENCEMENT OF WORKS & UNTIL 6 MONTHS AFTER COMPLETION.
5. REMOVE REDUNDANT SIGNS AND LINE MARKING.
6. APPROVED BY LOCAL TRAFFIC COMMITTEE XXXXXXXX - REFERENCE: XXXXXXXX.

**Hornsby Shire Council
Design & Construction
Branch**

TELEPHONE: (02) 9847 6666
EMAIL: hac@hornsby.nsw.gov.au
Authorised for release - Manager Design & Construction
Name: R. RAJCA Signed: Date:

Designer
D. TAMANG
Signed:
Drawn
D. TAMANG
Signed:
Surveyor
T. PELL
Field Book Level Book AHD Datum
Project Identifier\CAD File Name
H:\Old Beecroft Road_LR_100188\Design\ACAD\Old Beecroft Rd.dwg
TRM Document Number

| | | | | |
|---|---|-------------------------|----------|---------|
| Design Checked-Design Team Leader | | | | |
| Signed: | | | | |
| Drawn | | | | |
| Signed: | | | | |
| Surveyor | | | | |
| Field Book | | | | |
| Level Book | | | | |
| AHD Datum | | | | |
| Issue | 1 | ISSUED FOR CONSTRUCTION | M. DRAKE | |
| Description | | | Name | Initial |
| | | | Date | |
| Design not to be amended without authorisation by Manager Design & Construction | | | | |

Bar Scales
0 1 2 3 4 5m
SCALE 1:100 @ A1
DRAFT
not for construction
HORNSBY SHIRE COUNCIL
PO BOX 37, HORNSBY NSW 1630

**OLD BEECROFT ROAD, CHELTENHAM
ROAD RECONSTRUCTION
BEECROFT ROAD TO No.26**

SIGNS & LINE MARKING PLAN.

| | | | |
|--------------------|---------------|-----------|----------|
| Project Number | 100188 | | |
| Sheet of | 15 | 15 | Issue |
| | | | 1 |
| HSC Drawing Number | 1151.1 | | |