



# ARTS AND CULTURAL PLAN 2024-2029

Art and creativity inspire and connect our community

[hornsby.nsw.gov.au](https://hornsby.nsw.gov.au)



# CONTENTS

Connections to Country .....	3
Message from the Mayor .....	4
Summary.....	6
Overview .....	10
The Role of Council .....	12
Strategy Framework .....	14
Our Creative Community – A Snapshot .....	18
What you told us .....	22
Our Vision .....	26
Focus Areas .....	28
Actions.....	32
Appendices .....	37



# CONNECTIONS TO COUNTRY

The area now known as Hornsby Shire is unique in its placement within the landscape with natural features differing from those that surround and beyond. The meandering ridge lines extending from the south, north-west and north-east, meet here at Hornsby Shire and expose its importance within the cultural landscape as a junction for these once heavily occupied travel routes.

An extremely important resource for all Mobs traversing across Country for business, ceremony or family obligations and responsibilities. From the ocean shores of Brooklyn, abundant in edible sea life and favourably utilised for its tasty treasures, to the rainforest covered gullies with constant supplies of native edible vegetation, grazing marsupials and rock shelters contribute to the uniqueness of this region.

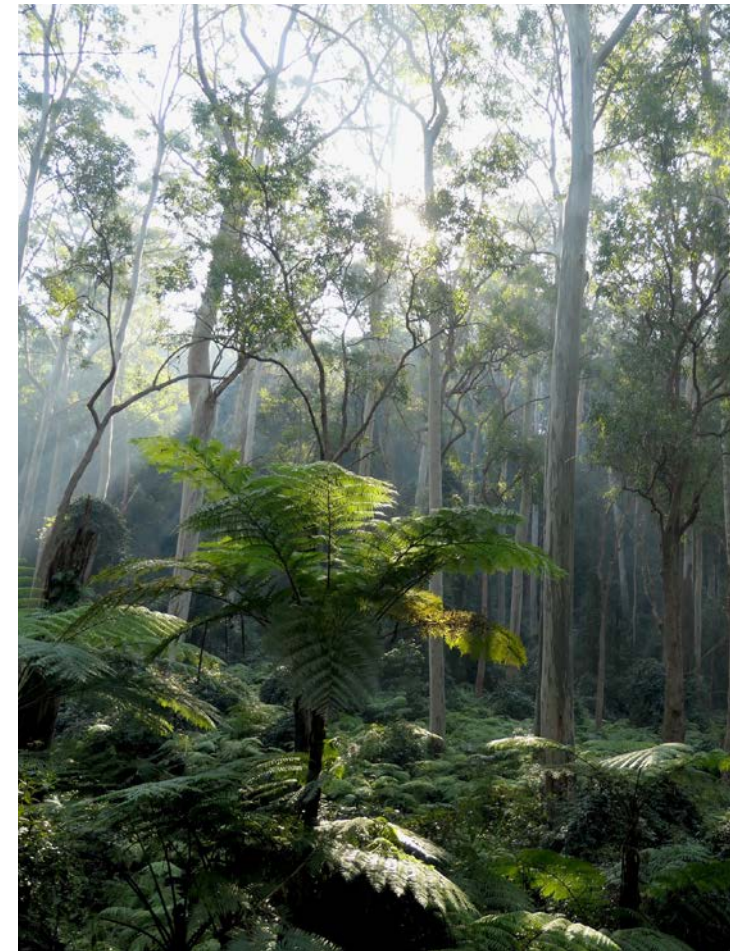
The Dharug and GuriNgai Peoples have protected and respected this area since time began. Sacred sites were etched into the sandstone by our Creator Ancestors about cultural knowledge, lore and law of Country, community, astronomy and weather patterns, to name only a few.

These are scattered strategically throughout this landscape and are still utilised today for ceremonies, celebrations, and Family gatherings and to pass cultural knowledge onto the next generations. For the Dharug and GuriNgai Peoples, this region is still alive and thriving from a cultural perspective. Despite the ever-growing demands for development and community infrastructures, the Hornsby Shire has lush and vibrant bushland areas, fresh and saltwater estuaries and breath-taking visual aspects across Country allowing us the ability to continue cultural practices, share cultural beliefs and expand on our relationship and connection with our Country. The Dharug and GuriNgai Peoples will continue to care for and respect Country.

We invite and encourage you to expand on your own connection to this unique and amazingly beautiful Country. In the early morning hours when the sun is rising and you breathe in the fresh, clean air of a new day, pay homage to Mother Earth and the Aboriginal Mobs that have protected, respected, utilised and honoured these lands for its lifetime, always being mindful of never depleting resources or damaging natural features created by Mother Earth and our Creator Ancestors.

***Tracey Howie,***

*Local bloodline descendant*



**Ana Rubio, *The land that time forgot***

# MESSAGE FROM THE MAYOR



**The arts enrich us as individuals and as a community by contributing to our health and wellbeing as well as to our broader education and emotional understanding of people and the things around us. As our community grows and changes, we must make space for arts and creativity and value our artists and their processes.**

Our aim for the Shire is that the area is not only recognised for its natural environment, but also for its distinct vibrant arts and creative opportunities and unique cultural experiences. By supporting a diverse range of artistic expressions, local government can build a sense of belonging and pride among residents. Cultural events, festivals, and public art installations contribute to the shared identity of a community, fostering social connections and a sense of place.

As a five-year commitment, this Plan is a framework to realise the future we desire and fulfill the creative and cultural potential of the Shire. Our vision is strong: we will foster vibrant and inclusive creative communities, showcasing our diverse stories through cultural events and activations. We will ensure that opportunities abound for our emerging and established talent, and draw inspiration from our stunning landscapes. We will also acknowledge and value the voices, culture and living heritage of the Traditional Custodians upon whose land we stand.

Arts and culture are significant contributors to local employment, community wellbeing, pride of place, tourism and economic development. The Arts and Cultural Plan is a key to realising our vision, and strengthening the Shire's cultural, social, economic and environmental aspirations.

This 2024-2029 Arts and Cultural Plan for Hornsby Shire builds upon our strengths, assets and community aspirations. It will ensure that Council's investment in arts and culture is strategic, prudent and effective.

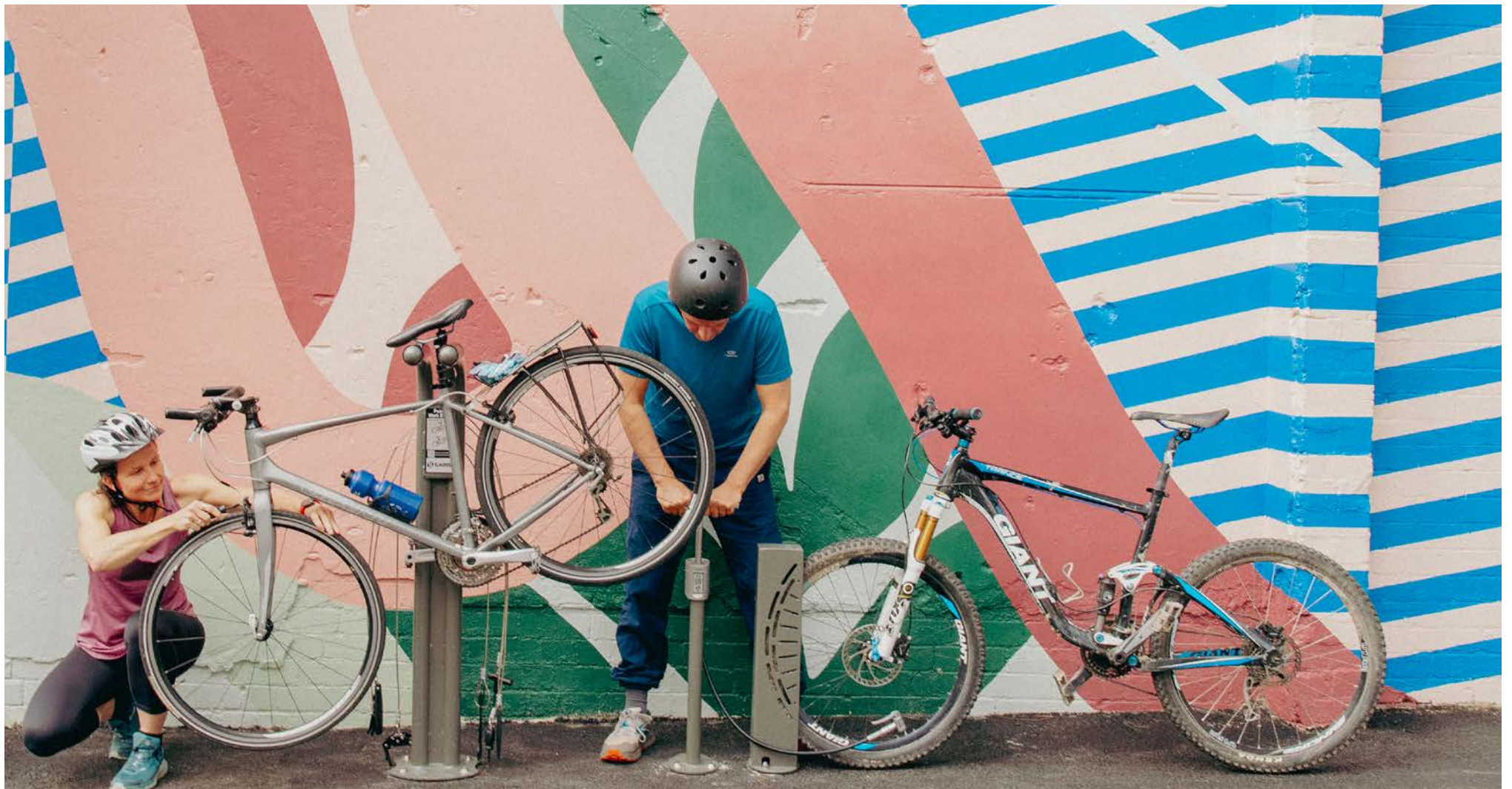
My thanks to the many community members who have supported and contributed to this Plan. Their input has been invaluable.

A handwritten signature in black ink that reads "Philip Ruddock". The script is fluid and cursive.

**Philip Ruddock AO  
Mayor, Hornsby Shire Council**



Elliott Routledge, *Wriggle River*, mural



# SUMMARY

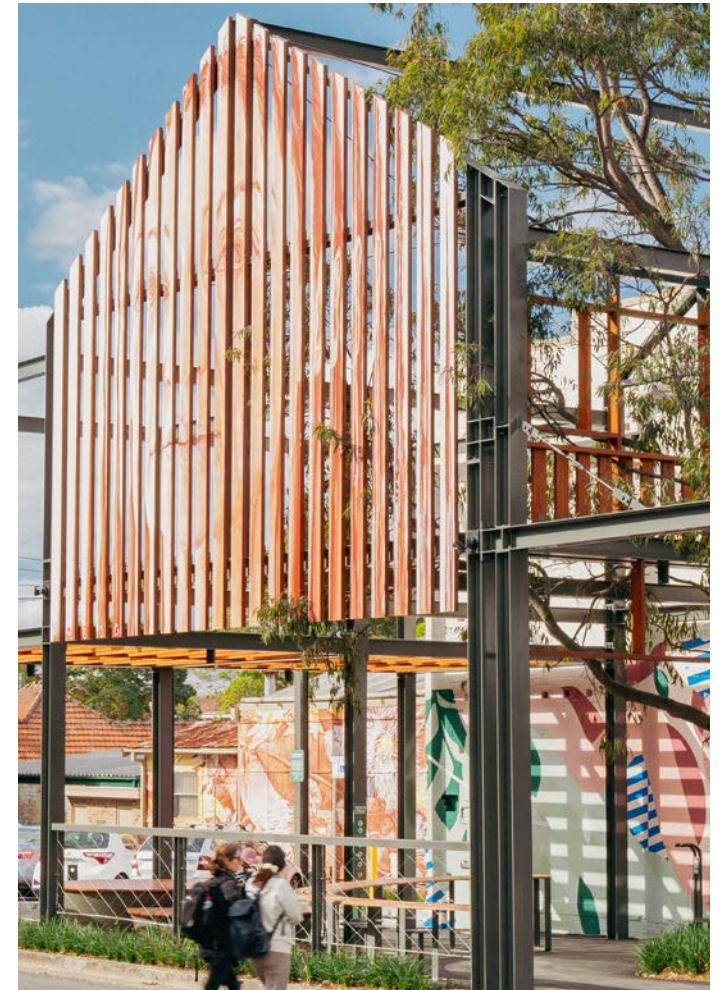
## **The Arts and Cultural Plan provides a framework and a set of actions to build a rich cultural life in the Hornsby Shire and maximise the community's engagement with arts and culture.**

The Plan was developed through broad community consultation, and through reviewing Council's current priorities and plans to ensure strong alignment. Interviews and group discussions were supplemented with a community-wide survey. There were 500 responses to the survey – including over 100 from individuals who are actively involved in the arts and creative industries in the Hornsby Shire. A number of clear messages emerged from the community consultation.

- The need for spaces for the arts to flourish, and for the community to engage with arts and cultural activity
- Opportunities to activate the Hornsby Shire through arts and culture
- The importance of supporting our creative and cultural community
- The need to support arts and cultural activity with strong communications and promotion
- The value placed on the Hornsby Shire's diverse, multicultural nature and rich heritage

The Plan was also informed by reviewing the arts and cultural plans of neighbouring local governments, and considering the current priorities of State and Federal Government in cultural planning.

The Arts and Cultural Plan presents a summary of key findings from the consultation, followed by a high-level Vision, and a set of focus areas to fulfil the Vision. A five-year Action Plan illustrates how the strategies can be implemented.



**Coronation Street, Fintan Magee, *untitled*, mural**



---

## From Arts to Culture

**The Arts** are the physical results of our creative impulse. The various art forms represent an outlet for creative expression which is both influenced by our culture and, in turn, influences it.

**Culture** is how we express who we are, as a member of a group. Through arts activities, festivals and events, through food and traditions - our culture makes us feel connected and welcome, and proud of our home and Hornsby Shire.



Performer, Westside Vibe event





Fintan Magee, untitled, mural



---

**71% BELIEVE THAT THE ARTS  
ARE INTEGRAL TO HORNSBY'S  
COMMUNITY LIFE**

# OVERVIEW

The Arts and Cultural Plan aims to encourage a high level of community engagement with arts, culture and creativity; and to support our creative sector.



## OUR VISION

**Art and creativity inspire and connect our community**



## FOCUS AREAS

1. Creating places and spaces for the arts to flourish
2. Activating the Hornsby Shire through arts and creativity
3. Supporting our creative community
4. Communicating and connecting to engage our community
5. Celebrating our cultural heritage, identity and diversity



## PRINCIPLES

- A strong relationship with the GuriNgai and Dharug traditional owners
- Connecting with our natural environment, our urban areas, and neighbourhoods
- Advancing the role of artists
- Nurturing our local identity and heritage, connecting to our stories
- Activating our places and spaces
- Valuing diversity, equality of access, and inclusion.





Glenda Kent, *Quirky*, 2023 Remagine Art Prize finalist

# THE ROLE OF COUNCIL

Hornsby Shire Council has a key part to play in providing leadership and momentum for the implementation of this five-year Arts and Cultural Plan, via partnerships, programs and services, and advocacy. Council has several roles to play.

Figure 1 | Council's role in supporting arts and culture









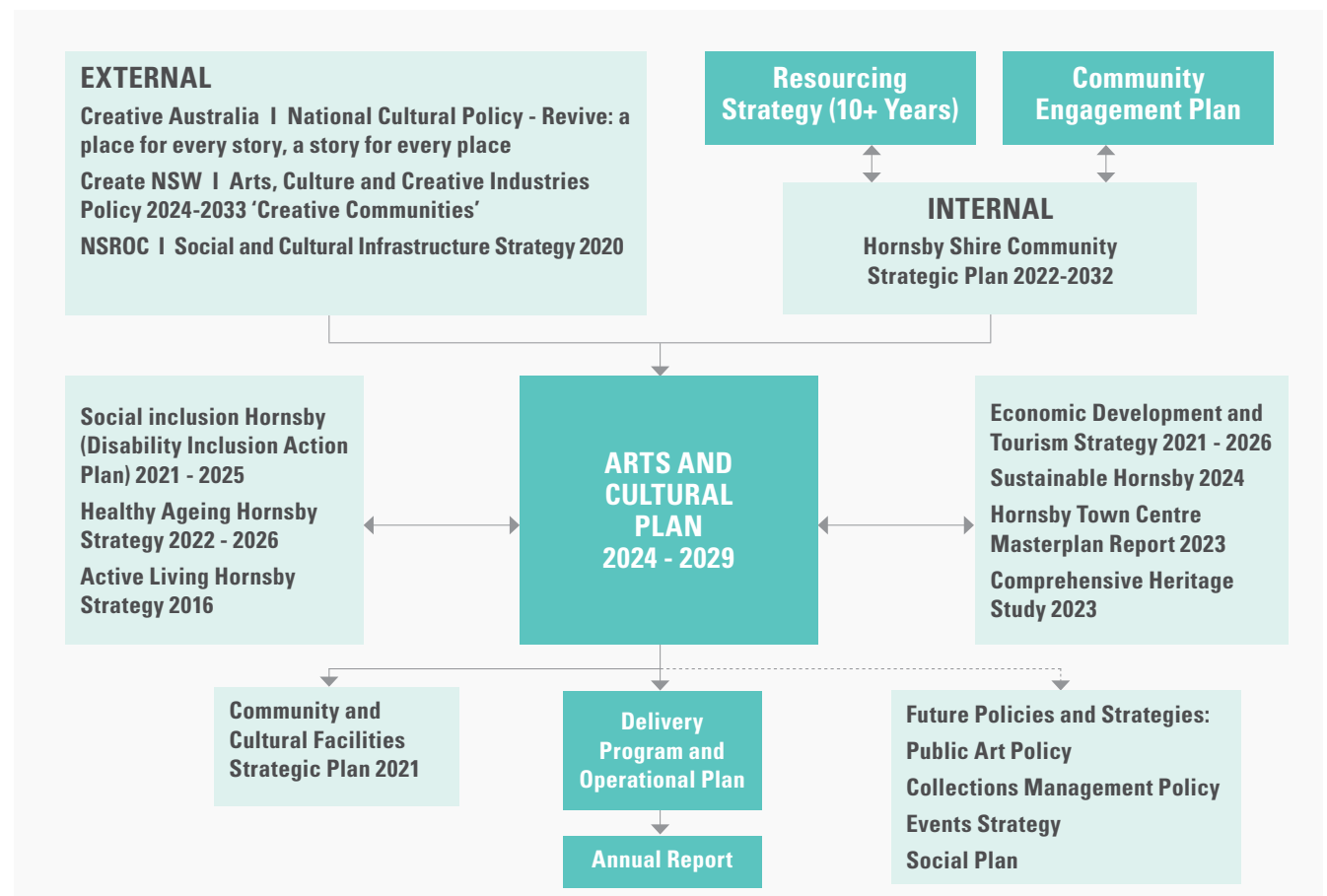
# STRATEGY FRAMEWORK

**The Arts and Cultural Plan provides a framework and a set of actions to build a rich cultural life in the Hornsby Shire and maximise the community's engagement with arts and culture.**

It has been shaped by consultation with the Hornsby community, and by consideration of broader State and Federal Government policies, such as 'Creative Communities', the NSW Government's Arts, Culture and Creative Industries Policy 2024-2033.

The Plan is also aligned to Hornsby Shire's Community Strategic Plan 2022-2032, and has links to a range of other Council plans and strategies.

Community consultation, a review of Council's existing plans and strategies, and comparison with provision in other LGAs identified a range of strengths, weaknesses, opportunities and challenges for arts and cultural development in the Hornsby Shire. These inform the priorities for the Arts and Cultural Plan.





# STRATEGY FRAMEWORK

## Hornsby Shire Community

### Strategic Plan 2022-2032

- Advocates for the celebration of Aboriginal heritage, and promotion of Indigenous art
- Advocates for a diverse, welcoming, inclusive, and resilient community
- Highlights community enjoyment of outdoor recreation opportunities
- Identifies 'Community facilities and cultural events' and 'Diverse, inclusive and accessible communities' in the top 10 issues
- Identifies priority action of developing a night-time economy in Hornsby Town Centre
- Underscores the synergy between the natural beauty of the area and its arts and cultural offerings
- Recognises that the Hornsby Shire's arts and creative industries may represent a local competitive strength

## Community and Cultural Facilities

### Strategic Plan 2021

- Notes the need for more flexible spaces for hire, bespoke storage solutions, and a clear policy approach to the use of community facilities
- Recognises community centres as spaces where the community comes together, and a perceived need for a high-quality performance venue.
- Notes the need for a new masterplan for the Wallarobba Arts and Cultural Centre cluster of facilities, and the clear delineation of the creative role of Wallarobba from other creative spaces

## Active Living Hornsby Strategy 2016

- Highlights opportunity for public art in landscape design as contributing to a sense of place and local identity
- Highlights the need to recognise and preserve indigenous connections, promoting cultural diversity, inclusivity and paying homage to the region's rich history.
- Highlights the emergence of a new market at Hornsby TAFE offering a mix of fresh food, craft, clothing and art – opportunities for enhancing the Hornsby Shire's appeal as a cultural destination

## Economic Development and Tourism

### Strategy 2021-2026

- Notes the importance of developing vibrant and connected places, with a focus on CBD revitalisation and a stronger night-time economy in the Hornsby Town Centre.
- Highlights potential for a co-working space or business hub facility to support home-based businesses and start-ups
- Identifies potential for growth in the arts and creative industries
- Recommends development of a regional events strategy with signature food and wine and culture-based events

---

**78% OF THE COMMUNITY  
AGREED THAT THEY PERSONALLY  
VALUE THE ARTS**





Scott Nagy and Krimson, *Reduce/Reuse/Recycle*, mural



# OUR CREATIVE COMMUNITY — A SNAPSHOT

**The Arts and Cultural Plan provides a framework and a set of actions to build a rich cultural life in the Hornsby Shire and maximise the community's engagement with arts and culture.**

## HORNSBY SHIRE

Hornsby Shire, a region of scenic beauty and rich history, is home to the traditional landowners, the Dharug and GuriNgai peoples. The Hornsby Shire, covering 460 square kilometres, is a tapestry of two distinct characters. To the north, it boasts large areas of national park, semi-rural landscapes, quaint villages, and the serene Hawkesbury River. In contrast, the south is largely urban, housing all major town centres.

Nearly two-thirds of the Hornsby Shire's land is dedicated to national parks and reserves, contributing to its well-deserved reputation as the "Bushland Shire". Hornsby Shire encompasses two major centres, Hornsby and Pennant Hills, and is home to notable attractions such as Ku-ring-gai Chase National Park, Marramarra National Park, and Berowra Valley Regional Park.

Hornsby Shire has experienced challenges related to a growing and aging population and increased densification. The cultural landscape has also been enriched by a growing Southeast Asian community, which has contributed to new traditions, cuisine, and centres of faith. This cultural shift has led to repurposing old centres of faith, adding a new layer of heritage, and reflecting the evolving beliefs within the Hornsby Shire.

Hornsby Shire has been identified as one of the 'Top Eight' locations for accommodating the State's growing population. The 2023 population of 156,000 is anticipated to increase to 175,000 by 2036.

As the population expands, new or improved community and cultural facilities will be needed to cater to the evolving needs of the residents. This entails exploring opportunities for inclusive

facilities that serve as social, cultural, and economic hubs.

The Hornsby Town Centre Review Project presents an exciting opportunity to discover innovative alternatives for community facilities, further enhancing the Hornsby Shire's appeal as a key growth zone and public transport hub.

## PARTICIPATION IN ARTS AND CULTURE

Residents of the Federal Electorate of Berowra, which largely overlaps with Hornsby Shire, are active participants in arts and culture<sup>1</sup>. Residents attend cultural events and venues, spanning art galleries, theatre, dance, and music performances.

In Berowra, during 2021-22 63% of the population attended cultural events. Children under 15 years showed even higher involvement, with an average of 82% attending cultural venues or events. The comparative NSW data indicates that Berowra's cultural engagement exceeded average NSW levels in more than half of the activity types assessed<sup>2</sup>.

## OUR CREATIVE SECTOR

A total of 4,344 businesses in the Hornsby LGA fall within the creative industries. Creative businesses range from sole traders (70% of the total) to private companies and partnerships. The following chart provides detail of local creative businesses for the top five sectors.

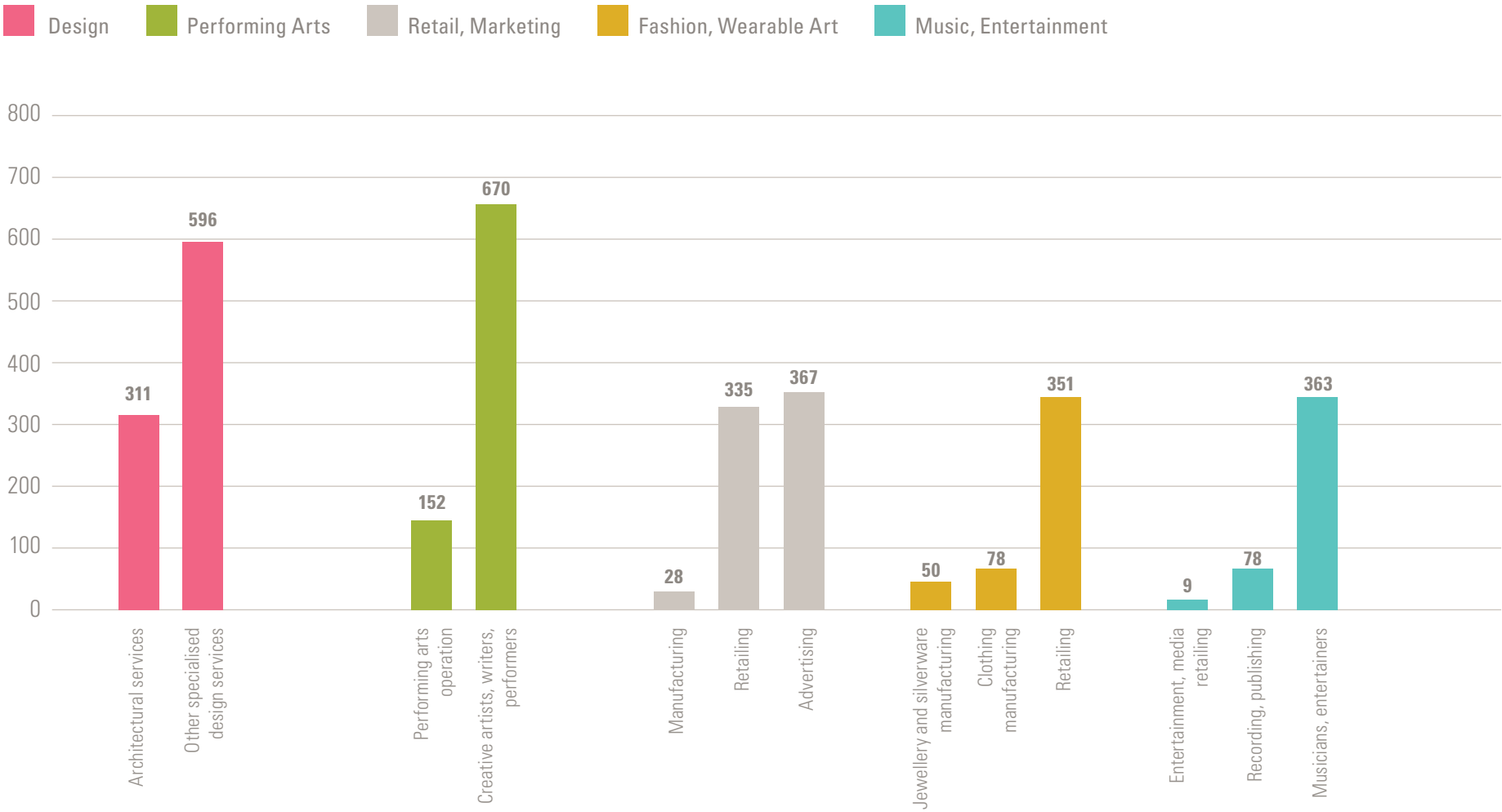


**Amara Zenteno, *Little worlds in the waterways*, 2023 Hornsby Art Prize finalist**



# OUR CREATIVE COMMUNITY – A SNAPSHOT

Figure 2 | Creative practitioners and businesses in Hornsby Shire LGA



# OUR CREATIVE COMMUNITY — A SNAPSHOT

## CURRENT FACILITIES AND ACTIVITIES

From libraries, to community and cultural centres, scout and guide halls<sup>4</sup>, Hornsby Shire Council hosts a range of community and cultural facilities and activities. Some of these include:

### Visual Arts

- The Hornsby Art Society plays a significant role in promoting arts in the Hornsby Shire, and assists Council with events such as the Remagine Art Prize and the Hornsby Art Prize
- The Arcadian Artists – based in the rural district of Arcadia, formed over 30 years ago by a small group of local artists, now responsible for the Arcadian Artists Annual Arts Trail
- Ferry Artists – a community-run art gallery in Wisemans Ferry, where local artists can exhibit and sell their work.
- The Cottage in Brooklyn – a community/volunteer run art space
- Wallarobba Arts and Cultural Centre

### Arts Education

- Hornsby TAFE – offering specialisations in graphic design, information technology, visual arts, and ceramics.
- Sydney Art School and Hamley Studio – offering fine art classes and workshops for students of all experience levels
- Studio ARTES – a unique environment for adults with disabilities, offering creative and life programs – a place where individuals can learn a variety of skills, from cooking and gardening to painting, drawing, sculpting, dancing, and playing music.

## Performing Arts

- Hornsby Musical Society – which has been staging musicals since 1958
- Theatre in the Park – dedicated to delivering a quality theatre experience to a diverse audience
- The Gangshow – a theatrical performance by members of Scouts and Guides, providing a performing arts learning opportunity for young people
- Berowra Musical Society

## Cultural

- Aknoon – an Iranian Australian Cultural Centre based in Hornsby

## WHERE WE CAN IMPROVE

The Wallarobba Arts and Cultural Centre (Wallarobba) is a dedicated arts facility – offering a community art studio, a purpose-built printmaking room, art classes and multiple gallery spaces. While Wallarobba does not have exhibition spaces that meet the accepted standards of a Regional Art Gallery resources have recently been allocated to overall site improvements. There is no professional standard public art gallery in the Hornsby Shire, and an absence of facilities and fewer active organisations in other areas of the arts and creative industries – such as theatre, music, dance, screen and digital arts. Plans are in place to implement suggested rates of provision for various facilities as outlined in the Northern Sydney Regional Organisation of Councils (NSROC) Social and Cultural Infrastructure Strategy.





**“ A thriving Arts and Culture sector is essential for the health and well-being of any community...The Arts teach us to know ourselves and reveal to us things about life we may feel but are unable to articulate ”**

John Bell, AO, OBE

Performer, Westside Vibe

# WHAT YOU TOLD US

## WHAT YOU TOLD US

In October 2023, community engagement was undertaken to help us understand the nature of the community's engagement with the arts, gather views on current and future arts provision in the Hornsby Shire and increase Council's knowledge of local artists and arts organisations. A community wide survey was issued, with 500 responses received, of which 110 were from individuals closely involved with the arts and creative industries. The survey was supplemented with interviews and group discussions.

- Many residents are unaware of galleries, exhibitions and cultural activities taking place in the Hornsby Shire
- A need for better marketing, promotion, and communication about these locations and events

### **Creative practitioners identified a range of barriers to growth in their business:**

- 50% noted financial constraints as a key barrier: the rising cost of living, increased expenses, public liability insurance, energy bills
- Several specified the lack of suitable or affordable studio/performance space as a significant barrier

### **Connection to and preservation of our 'Bushland Shire':**

- Over 50% of respondents mentioned the importance of a strong connection to the natural environment, including bushland, national parks, and waterways.
- You expressed concerns about the impact of ongoing developments in high-density living on shared community spaces and our local environment.
- You want to see tree canopies protected and ensure continued value of 'our Bushland Shire', key to local tourism.

### **A Hornsby Shire proud of its diversity and Indigenous heritage:**

- You identified cultural inclusivity as a strength of our Hornsby Shire
- You expressed a shared aspiration to fully integrate our expanding new and migrant communities into our cultural fabric, including our Chinese, Indian, and Korean populations.
- You expressed pride in the strong GuriNgai and Dharug heritage of our Hornsby Shire and a desire that this continue to be recognised and celebrated.

### **Improving our facilities and broadening our events:**

- The three top-nominated improvements Hornsby's residents would like to see are:
  - A dedicated, purpose-built, central performing arts venue
  - More concerts, bands, and musical events
  - Enhancements to the visual arts, public art, and galleries.

### **A Vibrant Hornsby:**

- You want to feel proud of where you live.
- You envisage murals and sculpture celebrating arts and culture, bringing colour and life to our Hornsby Shire – in the streets, and on Council and other buildings.
- You are keen to see Hornsby Town Centre enlivened with art.
- You believe there are opportunities for more outdoor events and festivals.
- You raised concerns about the lack of restaurants and the limited night-time activities on offer in the Hornsby Shire
- You suggested working to create opportunities close to home for work in the creative sector and for locals to attend more local events, avoiding the need to travel to Sydney.



# WHAT YOU TOLD US

## Communicating and listening:

- You commented on insufficient promotion resulting in low public awareness of arts and cultural events.
- You would like to see us harness the possibilities of social media and digital platforms to connect with audiences and improve accessibility to arts and cultural events in our Hornsby Shire.

## We value the Arts:

- You acknowledged local arts and cultural groups for their contribution to the vibrant arts scene.
- You expressed a desire for increased focus on celebrating arts and culture in the Hornsby Shire, and improving the skills devoted to marketing and audience development.
- You want to see an expansion of arts development and programming beyond the visual arts to the performing arts and music.

## And we value our artists:

- You acknowledged the strengths of many committed organisations and individuals
- You also highlighted the need to support those who are building their creative practice locally.

## Participation:

Venues attended outside the Hornsby Shire include:

- The Concourse at Chatswood (54% visited in the last few years)
- Parramatta Riverside Theatres (36%).

Venues attended in the Sydney CBD include:

- 61% have visited the Sydney Opera House in the last few years
- 52% the Art Gallery of NSW
- 46% the State Theatre
- 44% The Capitol Theatre



Gillian Hodes, *Fossil*, 2023 Remagine Art Prize finalist

---

**ONLY 21% FELT THERE WAS  
ADEQUATE PROVISION OF  
ARTS AND CULTURE IN THE  
HORNSBY SHIRE**





Jamie Eastwood, *Caring for Dyarubbin Hawkesbury River Nura Country*, mural



# OUR VISION

Arts and culture are enablers of diversity, creativity, healthy and resilient communities, environmental leadership, and strong economies. We will foster vibrant and inclusive creative communities, showcasing our many stories through cultural events and activation.

Artists are intrinsic and fundamental to our Hornsby Shire's future. We will build opportunities for our emerging and established creative talent, and draw inspiration from our stunning natural environment.

A creative environment attracts people, businesses and organisations to invest, create and connect. Our Hornsby Shire will be a lively and welcoming place to participate in arts and culture, and a centre for the emerging and professional creative sector.

We will acknowledge and value the voices, culture and living heritage of the traditional custodians upon whose land we live.


The arts and cultural strengths of our Hornsby Shire will be inspired by the beauty of our natural environment and celebrated in the lifestyles we cherish.

**Art and creativity inspire and connect our community**



**Jennifer Rosnell, *On the way to Dangar Island*,  
2023 Hornsby Art Prize finalist**





*“Hornsby Shire has a rich history of creatives being drawn here to live near the bush. It’s been home to many prolific artists such as Margaret Preston, with her native garden in Berowra, and artist Margaret Woodward who invited her contemporaries such as Guy Warren, Judy Cassab, and John Coburn to her home in Hornsby. The highly regarded Cicada Press operates out of Hornsby, and Dangar Island is home to a community of well-respected artists. There is even a local poet, Martin Langford, living in my street”*

Stephen Hall, local artist.

Elliott Routledge, *Wriggle River*, mural



# FOCUS AREAS

Our consultation with the community, and benchmarking of regional developments in the arts and creative sector, have highlighted five key focus areas for Hornsby Shire's Arts and Cultural Plan:

1. **Creating places and spaces for the arts to flourish**
2. **Activating the Hornsby Shire through arts and creativity**
3. **Supporting our creative community**
4. **Communicating and connecting to engage our community**
5. **Celebrating our cultural heritage, identity and diversity**

## CREATING PLACES AND SPACES FOR THE ARTS TO FLOURISH

Both in our urban areas and our beautiful bushland and parks there is a need to develop a range of facilities and spaces where art and cultural activity can flourish. This includes facilities for making and for presenting – in the visual and performing arts, in new media and interdisciplinary work. It ranges from modest adaptations of existing infrastructure to new, customised facilities.

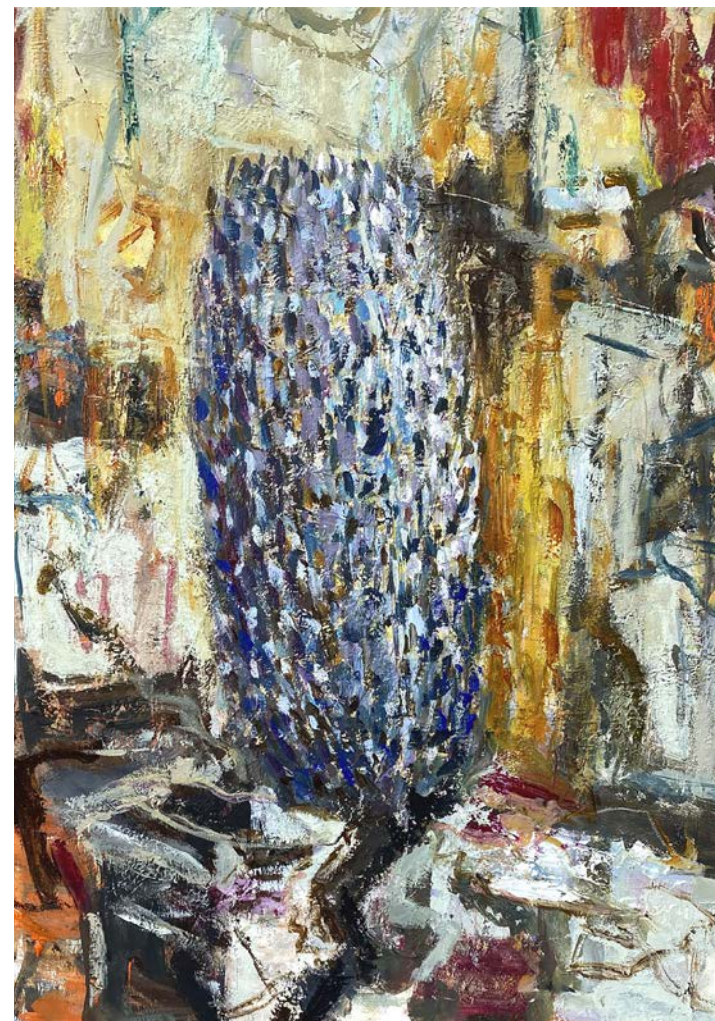
All of our investment in facilities needs to reflect the Hornsby Shire's unique situation. Large-scale facilities will not be required when our community has access to such facilities in the Sydney CBD or in neighbouring areas. But small and medium-scale facilities will nurture local creative practice – and provide much-needed opportunities for community interaction and celebration through cultural activity.

## SHORT TERM

In the short-term upgrading the Wallarobba Arts and Cultural Centre site and fully exploiting its potential will support the arts. With modest investment several of our community halls can better support performance and presentation – notably Berowra and Cherrybrook. With improved car parking, power supplies, and adequate amenities Fagan Park and possibly other outdoor spaces can become regular features of our cultural calendar. As well as pop up venues, artist in residence programs and mural walls.

## MEDIUM TERM

In the medium-term the development of Hornsby Town Centre presents an exciting, once-in-a-generation opportunity to address arts infrastructure needs, which will energise our arts and creative sector and enhance cultural life of our community. Both the short and medium-term developments will be informed by detailed feasibility studies to ensure best-value for the community.



Viola Dominello, *Banksia*, 2023 Hornsby Art Prize finalist



# FOCUS AREAS

## ACTIVATING HORNSBY SHIRE THROUGH ARTS AND CULTURE

Public art and integrated artwork can animate our streets and buildings, and add points of interest and focus to our parks and our bushland trails. Well-curated public art enhances the urban aesthetic, contributing to a pleasant, welcoming, up-beat environment. We will seek opportunities to enhance Council buildings and sites, and to encourage commercial developers and others to include artwork in their developments. We will develop a public art policy to provide a clear and consistent framework for future artwork. We will engage closely with our First Nations community to understand site-specific cultural contexts and to identify ways in which Aboriginal artwork can be highlighted.

Urban areas can be enlivened at night-time through formal and informal events and performances, through night-time markets, cafes and restaurants. Such activities can also enhance individuals' sense of safety. Through zoning, licensing, occasional grant support – and close coordination with arts and other organisations – we will facilitate the development of an evening economy and a vibrant Hornsby.

Complementing this we will encourage family-focused day-time and holiday-time programs, working in partnership with our creative and cultural organisations. The Hornsby Shire is blessed with an increasingly diverse community – presenting opportunities for cultural festivals and events, and for the engagement of our whole community.

## SUPPORTING OUR CREATIVE COMMUNITY

The development of facilities will help our creative practitioners to make and to present. Public art and the presentation of events, festivals and programs will all provide opportunities to commission or engage our creatives, improving their capacity to earn a living from their practice.

We will also support our creative practitioners through targeted grants and funding, and through highlighting them on Council communications. We will celebrate the creative life of Hornsby and make the Hornsby Shire a welcoming place for artists. Our proximity to Sydney – a major hub for the creative industries – combined with our beautiful bushland environment presents great opportunities to attract creatives to live and work in the Hornsby Shire

## COMMUNICATING AND CONNECTING, TO ENGAGE OUR COMMUNITY

As our arts and cultural activities expand we will support Council, community and commercial events with strategic marketing and communications, to reach all sections of our community. We will increase awareness of our facilities and activities through proactive use of social media and community organisations.

We will facilitate connections between community cultural organisations, and encourage networking to share knowledge, facilities and program planning.

Research and consultation have informed the Arts and Cultural Plan. Regular consultation will continue to inform the implementation of the Plan. We will listen to the community, to our creatives, to our First Nations representatives to ensure our future actions and investments in arts and culture are responsive, targeted and effective.

## CELEBRATE OUR CULTURAL HERITAGE, IDENTITY AND DIVERSITY

The Dharug and GuriNgai Peoples have protected and respected this area since time began. Sacred sites were etched into the sandstone relating to cultural knowledge, lore and law of Country, community, astronomy and weather patterns. These sites are scattered throughout the landscape and are still utilised today. For the Dharug and GuriNgai Peoples, the region is alive and thriving from a cultural perspective.

In recent times the cultural landscape has been enriched by a growing Southeast Asian community, which has contributed to new traditions, cuisine, and centres of faith. This cultural shift has led to repurposing old centres of faith, adding a new layer of heritage.

The Traditional Owners, European settlers and more recent migrants contribute to a multi-layered cultural fabric which is shaping Hornsby Shire as a distinctive, evolving community. Our Arts and Cultural Plan will support recognition and celebration of the breadth and diversity of the community.

---

**OUR RIVER, WATERWAYS AND  
PRISTINE UNTOUCHED BUSHLAND  
PROVIDE ENDLESS INSPIRATION  
FOR CREATIVE PURSUITS.**





Dyarubbin Hawkesbury River



# ACTIONS

## FOCUS AREA 1

### CREATING PLACES AND SPACES FOR THE ARTS TO FLOURISH

**OUTCOME:** Cultural asset planning is integrated into our local planning and decision-making

#### PERFORMANCE MEASURES:

■ Increased arts and cultural usage of our community assets | Increased availability of places for making and presenting.

Actions	2024/25	2025/26	2026/27	2027/28	2028/29
1.1 Investigate the potential for upgrading of Council-owned community facilities for enhanced arts and cultural usage	▲	▲			
1.2 Upgrade selected Hornsby Shire community halls to increase their functionality for performance		▲	▲		
1.3 Commission a feasibility study and site options study into the development of a performing arts and cultural facility in Hornsby Shire		▲			
1.4 Commission the development of a master plan for the Wallarobba site to optimise its benefit to the community	▲				
1.5 Review suitability of the Shire's parks and outdoor spaces (e.g. Fagan Park) for cultural activities, and identify infrastructure improvements that will support their greater usage	▲				
1.6 Encourage pop-up and temporary use of spaces (e.g. end-of-lease) for art exhibitions	▲	▲	▲	▲	▲
1.7 Hold one or more forums with private schools locally to optimise access to their facilities and support collaborative arts delivery	▲				
1.8 Develop a coordinated strategy to generate a lively, activated streetscape both day and night, through outdoor performance and festival programming, street art and mural installations		▲	▲		
1.9 Investigate potential suitable sites for art making including temporary art studios and warehouse space. A range of spaces for creative practice, ranging from hobby to professional.		▲	▲		
1.10 Investigate potential sites throughout the Shire to accommodate murals – mural mapping project		▲	▲		



# ACTIONS

## FOCUS AREA 2

### ACTIVATING THE HORNSBY SHIRE THROUGH ARTS AND CREATIVITY

**OUTCOME:** The Hornsby Shire has a strong reputation for cultural vibrancy

**PERFORMANCE MEASURES:**

■ Visibility of arts and cultural expression throughout the Hornsby Shire | Levels of community participation in arts and cultural activities | Enhanced skills and collaboration within our creative community

Actions	2024/25	2025/26	2026/27	2027/28	2028/29
2.1 Develop and implement a Public Art Policy and a Collection Policy		▲			
2.2 Develop a Council venues hiring policy that facilitates regular arts and cultural usage	▲				
2.3 Harness the opportunities for commissioned work to be integrated into new public and private developments		▲	▲	▲	▲
2.4 Undertake mural mapping project		▲			
2.5 Open studios and art trails			▲		
2.6 Curated exhibitions at Wallarobba Arts and Cultural Centre, investigate an annual EOI for potential exhibitions by local artists		▲	▲	▲	▲
2.7 Establish artist in residence program		▲	▲	▲	▲
2.8 Increase Council staffing resources to enable implementation of the Arts and Cultural Plan		▲	▲		
2.9 Cultivate and celebrate creative leadership through facilitation of professional development, and through awards and bursaries		▲	▲	▲	▲
2.10 Review the current delivery of Hornsby's two Art Prizes		▲			
2.11 Provide selective merit-based funding to creative practitioners and leaders to encourage the development of new work in the Shire			▲	▲	▲
2.12 Develop and implement a management plan for Wallarobba Arts and Cultural Centre		▲	▲		

# ACTIONS

## FOCUS AREA 3

### SUPPORTING OUR CREATIVE COMMUNITY

**OUTCOME:** Strong recognition of our creative community and retention and growth of our creative sector.

**PERFORMANCE MEASURES:**

- Increased number of creatives based in the Hornsby Shire
- Greater breadth of creative sub-sectors
- Heightened economic impact from cultural and creative activity

Actions	2024/25	2025/26	2026/27	2027/28	2028/29
3.1 Investigate grant funding – Arts and Cultural Grants to support volunteer led organisations (eg. 10 groups x \$3000 = \$30,000)		▲	▲		
3.2 Investigate grant funding on merit basis for local artists to develop bodies of work		▲	▲		
3.3 Creatives mapping project – to better understand the creatives that live in Hornsby Shire		▲	▲		
3.4 Mentoring for young creatives – there is a wealth of knowledge amongst senior creatives that live in the Hornsby Shire		▲	▲		
3.5 Facilitate networking and communication between arts and cultural groups	▲	▲	▲	▲	▲
3.6 Facilitate networking activities between our creatives and our education and business communities to encourage partnerships and create mutually beneficial opportunities		▲	▲		
3.7 Hold periodic forums to maintain close understanding of the evolving creative community		▲		▲	
3.8 Survey creative practitioners and cultural groups periodically to learn more about their needs and aspirations		▲			▲
3.9 Support local arts and cultural activities with Council marketing resources		▲	▲	▲	▲
3.10 Increase Council's arts and cultural resources to reflect the increase in arts related activities, projects and engagement	▲	▲			



# ACTIONS

## FOCUS AREA 4

### COMMUNICATING AND CONNECTING TO ENGAGE OUR COMMUNITY

**OUTCOME:** Arts and Cultural programs that reflect and evolve with our community's needs

**PERFORMANCE MEASURES:**

- Range and frequency of consultation processes
- Community engagement with consultation processes
- Levels of community participation in arts and cultural activities
- Visibility of arts and culture in Council's communications and social media

Actions	2024/25	2025/26	2026/27	2027/28	2028/29
4.1 Feature arts and creativity regularly through Council's social media platforms	▲	▲	▲	▲	▲
4.2 Investigate new communications methods such as a dedicated Arts and Culture Instagram account or develop a Hornsby "Arts and Culture What's On" App			▲	▲	
4.3 Produce a monthly or quarterly arts and culture e-newsletter			▲	▲	
4.4 Upgrade the Council's website art and culture pages to reflect the increase in activities			▲	▲	
4.5 Increase engagement with educational colleges e.g. Hornsby TAFE, Sydney Art School		▲	▲		
4.6 Increase engagement with commercial and school galleries within Hornsby Shire		▲	▲		
4.7 Provide periodic internal briefings to integrate arts and cultural planning across Council's activities	▲	▲	▲	▲	▲
4.8 Develop an Arts and Culture dashboard to report on our progress in implementing this Plan	▲				

# ACTIONS

## FOCUS AREA 5

### CELEBRATING OUR CULTURAL HERITAGE, IDENTITY AND DIVERSITY

**OUTCOME:** Hornsby is known as a welcoming and richly diverse community

**PERFORMANCE MEASURES:**

- Community feedback
- Visibility of our First Nations culture
- Breadth of cultural events

Actions	2024/25	2025/26	2026/27	2027/28	2028/29
5.1 Celebrate and highlight the culture of our First Peoples including through commissioning, presenting and showcasing their work including visible public art installations		▲	▲	▲	▲
5.2 Interpret and communicate our heritage – tangible and intangible - through signage, through Council communications, and through other digital media platforms			▲	▲	▲
5.3 Develop and implement innovative cultural education programs, with diverse communities, designed to increase community cultural participation and understanding.		▲	▲	▲	▲
5.4 Undertake ongoing cultural mapping, data collection and research to identify, track and understand the needs, talents and behaviours of our community, as well as barriers to cultural participation	▲	▲	▲	▲	▲
5.5 Support a wide range of accessible cultural events – such as food markets, lantern festival, carnival		▲	▲	▲	▲
5.6 Investigate developing a signature annual or biennial arts event – Uniquely Hornsby				▲	▲
5.7 Investigate developing arts and cultural trails in our bushland			▲	▲	▲



# APPENDICES

---

**APPENDIX 1: ARTS AND CULTURAL PARTICIPATION CHART**

---

**APPENDIX 2: FACILITIES COMPARISON BY LGA**

---

**NOTES**

---



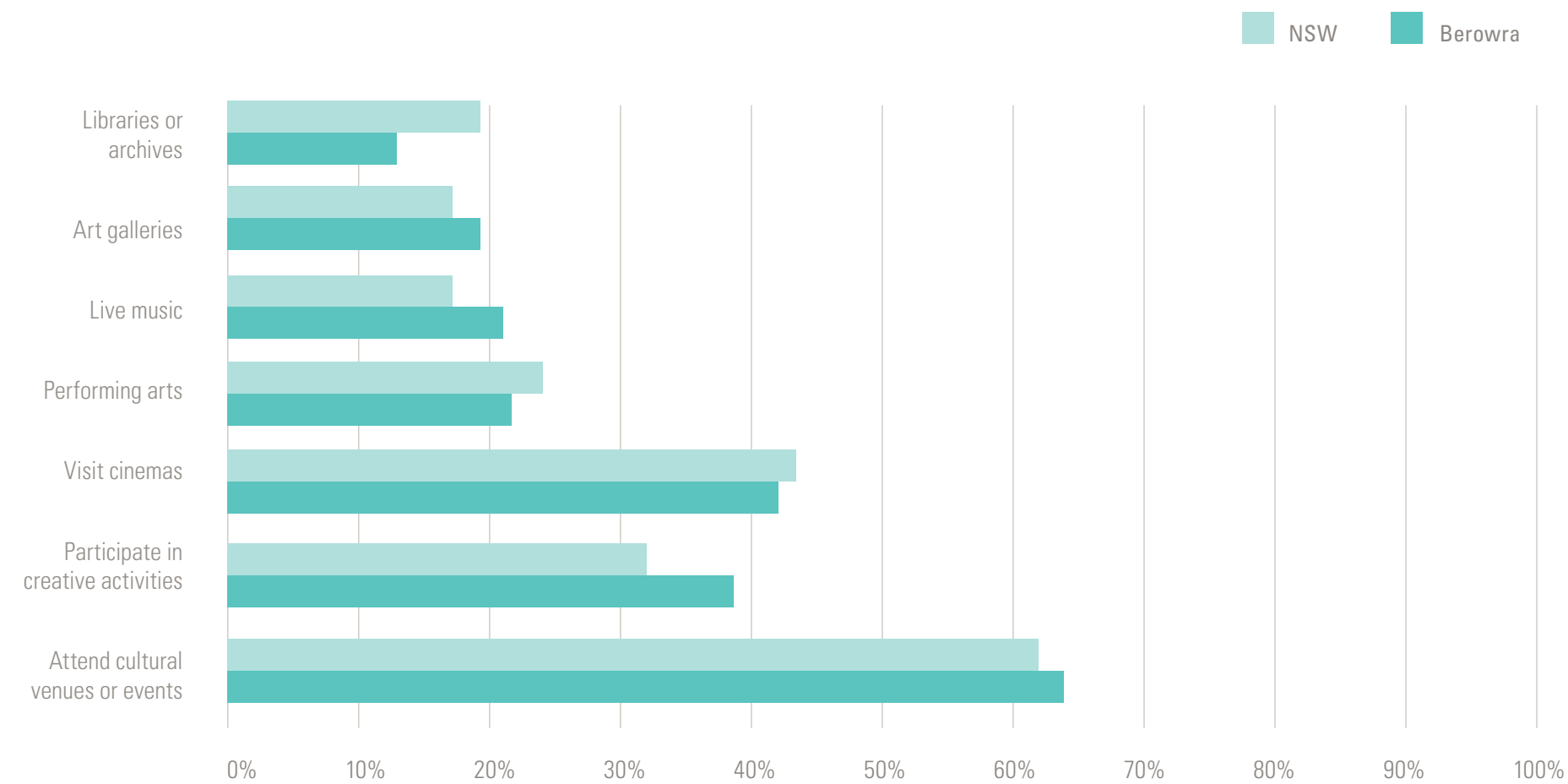
Performer, Westside Vibe

# APPENDIX 1

## ARTS AND CULTURAL PARTICIPATION CHART

ABS data indicates that in the Federal Electorate of Berowra residents have arts and cultural participation levels similar to the average for NSW as a whole.

Figure 3 | Engagement with Arts and Culture - Adults 15 years +





# APPENDIX 2

## FACILITIES COMPARISON BY LGA

The following table identifies facilities which are significant for arts and cultural development and delivery. Some are not in local government ownership. The data is as at December 2023.

FACILITIES COMPARISON BY LGA				
Hornsby Shire Council	Ryde City Council	Northern Beaches Council	The Hills Shire Council	Ku-ring-Gai Council
Population 151,757	Population 131,122	Population 263,298	Population 199,244	Population 124,172
<b>Major cultural infrastructure</b>	<b>Major cultural infrastructure</b>	<b>Major cultural infrastructure</b> Manly Art Gallery and Museum	<b>Major cultural infrastructure</b>	<b>Major cultural infrastructure</b>
<b>Performing Arts</b>	<b>Performing Arts</b> North Ryde RSL Youth Club	<b>Performing Arts</b> Glen Street Theatre Mona Vale Performance Space at Mona Vale High School Newport and Seaforth Bowling Clubs St Matthews Anglican Church Auditorium  Plus school operated theatre spaces at Barrenjoey High School and Stella Maris College	<b>Performing Arts</b> Pioneer Theatre Bella Vista Farm	<b>Performing Arts</b> Marian Street Theatre, Killara
<b>Visual Arts and Craft</b> Wollarobba Arts and Cultural Centre The Arcadian Artists Ferry Artists The Cottage, Brooklyn	<b>Visual Arts and Craft</b> See Street Gallery, Meadowbank TAFE Macquarie University Art Gallery  Willandra (small exhibition space and houses City of Ryde Art Society)  Into Arts Studio and Gallery Brenda Colahan Fine Art - Putney  Plus small library gallery spaces including; Ryde Library Digital Display, Ryde, West Ryde and Eastwood Library Display Cabinets and community exhibition space at Brush Farm House	<b>Visual Arts and Craft</b> The Creative Library – Level 1 Manly Library Diversarty Art Gallery on Palm Beach Sydney Road Gallery Yaw Way (Narrabeen RSL) Sydney Art Space Be Brave Artspace Curl Curl Creative Space Avalon Creative Space Pittwater Artist Trail	<b>Visual Arts and Craft</b> Castle Hill Art Society  Dural Galleries The Arthouse Pavilion Gallery Apollon Gallery	<b>Visual Arts and Craft</b> Ku-ring-Gai Art Centre and Gallery  KAB Gallery Sydney Grace Cossington Smith Gallery Wright Gallery Fine Art

# APPENDIX 2

## FACILITIES COMPARISON BY LGA

FACILITIES COMPARISON BY LGA				
Hornsby Shire Council	Ryde City Council	Northern Beaches Council	The Hills Shire Council	Ku-ring-Gai Council
<b>Heritage and Libraries</b> Hornsby Central Library Berowra Library Pennant Hills Library Galston Library	<b>Heritage and Libraries</b> NSW Schoolhouse Museum of Public Education Willandra (small museum and houses Ryde District Historical Society) Eastwood Library Gladesville Library North Ryde Library Ryde Library West Ryde Library Plus street libraries throughout the LGA	<b>Heritage and Libraries</b> Brookvale Library Dee Why Library Forestville Library Manly Library Mona Vale Library Belrose Library Plus volunteer-run Community Libraries at Avalon, Balgowlah Seaforth, Harbord and Terrey Hills North Head Quarantine Station Museum and Collection Council is also custodian of the Northern Beaches Cultural Collections including: <ul style="list-style-type: none"> <li>■ Manly Art Gallery &amp; Museum Collection</li> <li>■ Local Studies Collections (Manly, Warringah and Pittwater)</li> <li>■ Community Art Collections (Warringah, Pittwater)</li> <li>■ Public Art Collections and Civic Collections (Manly, Warringah, Pittwater)</li> </ul>	<b>Heritage and Libraries</b> Castle Hill Arts Society Hills Craft Markets Castle Hill Library Baulkham Hills Library Vinegar Hill Memorial Library Dural Library Aberdoon House Balcombe Heights Estate Castle Hill Heritage Park Cropley House Roughley House and 'The Pines'	<b>Heritage and Libraries</b> Gordon Central Library Turramurra Branch Library Lindfield Library St Ives Branch Library  Rose Seidler House Eryldene Historic House and Garden Aboriginal Heritage Office



# APPENDIX 2

## FACILITIES COMPARISON BY LGA

FACILITIES COMPARISON BY LGA				
Hornsby Shire Council	Ryde City Council	Northern Beaches Council	The Hills Shire Council	Ku-ring-Gai Council
<b>Co-working Spaces</b>	<b>Co-working Spaces</b>	<b>Co-working Spaces</b> La Crème Creative Sun Suites Sydney Christie Spaces North Sydney	<b>Co-working Spaces</b> Various within Norwest Business Park	<b>Co-working Spaces</b>
<b>Education</b> TAFE NSW Hornsby Hornsby Ku-ring-Gai Community College Sydney Art School art classes at Hornsby Studio	<b>Education</b> Meadowbank TAFE Macquarie University Clement Art School Eastwood	<b>Education</b> Northern Beaches Ceramics at Brookvale TAFE Community College North Narabeen Point Break Drama C3 College Oxford Falls Northern Beaches and Mosman College	<b>Education</b> TAFE NSW, The Hills has campuses in both Baulkham Hills and Castle Hill Sydney Art School classes at Baulkham Hills Arts Studio Blackout Theatre Company	<b>Education</b> Hornsby Ku-ring-Gai Community College

# APPENDIX 2

## FACILITIES COMPARISON BY LGA

FACILITIES COMPARISON BY LGA				
Hornsby Shire Council	Ryde City Council	Northern Beaches Council	The Hills Shire Council	Ku-ring-Gai Council
<b>Community Halls</b> Arcadia Community Centre Baden Powell Hall Beatrice Taylor Hall Beecroft Community Centre Berowra Community Centre Berowra District Hall Brooklyn Community Meeting Room Cherrybrook Community and Cultural Centre Cherrybrook – Gumnut Community Centre Cowan Community Centre Dangar Island Community Centre Galston Community Centre Glenorie Community Centre Hawkins Hall Hornsby Heights Community Centre Hornsby Leisure and Learning Centre Hornsby Youth and Family Centre Mount Colah Community Centre Mount Kuring-gai Community Centre Pennant Hills Community Centre Pennant Hills Leisure and Learning Centre Storey Park Community Centre Thornleigh Community Centre Wallarobba Arts and Cultural Centre Wisemans Ferry Community Centre	<b>Community Halls</b> Eastwood Community Centre Eastwood Women’s Rest Centre Forster Hall (Brush Farm House) Gladesville Meeting Room Lachlan’s Line Auditorium Marsfield Community Centre North Ryde School of Arts Shaftsbury Place Shepherds Bay Community Centre Station Street Hall and Meeting Room West Ryde Community Centre	<b>Community Halls</b> Collaroy Swim Club Community Centre Forest Community Arts Centre Newport Community Centre North Balgowlah Community Centre North Narrabeen Community Centre Cromer Community Centre Seaforth Village Community Centre Tramshed Arts and Community Centre Avalon Annexe PCYC Dee Why Plus over 30 other Council-managed multi-use centres	<b>Community Halls</b> Balcombe Heights Estate Buildings Dural Memorial Hall Harvey Lowe Pavilion South Maroota Hall Baulkham Hills Community Centre Winston Hills Community Centre Wrights Road Community Centre Village Green Community Centre, Bella Vista Crestwood Community Centre Vinegar Hill Memorial Community Centre. Plus over 20 other Council-managed centres across the Shire	<b>Community Halls</b> Turramurra Senior Citizens Centre Old School Building and AWL Youth Hub Ku-ring-Gai Town Hall West Pymble Community Centre East Lindfield Community Hall Blair Wark VC Community Centre Lindfield Senior Citizens Centre St Ives Community Centre and Fitz Youth Centre Caley’s Pavilion West Lindfield Community Hall East Roseville Community Hall Turramurra Youth Centre (The Dungeon)



# NOTES

- 
1. The Australia Council for the Arts 2021-2022. The analysis was based on ABS 2017-18 Multipurpose Household Survey. For the first time, the survey included both children (aged 5-14 years) and adults (aged 15 years and over). Detailed information about the results of the cultural attendance and participation surveys can be found on the ABS website [here](#). Further details on the methodology for the survey can be found [here](#)
  2. Ibid, ABS Cultural Attendance and Participation Surveys, data downloads available [here](#)
  3. REMplan Business data, ANZSIC codes: 90029; 90010; 90030, exported on Monday, 8 January 2024, REMPLAN™ Copyright 2024.
  4. Hornsby Shire Council. "Community and Cultural Facilities Strategic Plan." Fiton Consulting, 2021, p.39
  5. 85% of respondents were Hornsby Shire residents, among whom 78% have resided in the area for six or more years. Females accounted for 62% of respondents. The largest age cohort was 35-49 years old (29%).
  6. Ibid, ABS Data technical notes available here; 'For children's attendance and participation, values of 100% should be interpreted as representing a very high participation rate. It does not necessarily reflect that all children with this characteristic participated in the selected activity'
  7. Ibid, p.7
  8. Ibid, p.76
  9. Ibid, p.92-93
  10. Northern Sydney Regional Organisation of Councils (NSROC). "Social and Cultural Infrastructure Strategy." 2020, p.37-38

---

## Hornsby Shire Council

ABN 20 706 996 972

### Contact us

PO Box 37

Hornsby NSW 1630

Phone: **(02) 9847 6666**

Fax: **(02) 9847 6999**

Email: **[hsc@hornsby.nsw.gov.au](mailto:hsc@hornsby.nsw.gov.au)**

**[hornsby.nsw.gov.au](http://hornsby.nsw.gov.au)**

### Visit us

Hornsby Shire Council Administration Centre at Hornsby Library  
28-44 George St, Hornsby NSW 2077

### Office hours

Please check the website for the latest opening hours for the  
Customer Service Centre and Duty Officer.

## Disclaimer

Every effort has been made to provide accurate and complete information. However, the authors assume no responsibility for any direct, indirect, incidental, or consequential damages arising from the use of information in this document.

## Copyright Notice

No part of this publication may be reproduced in any form, or stored in a database or retrieval system, or transmitted or distributed in any form by any means, electronic, mechanical photocopying, recording, or otherwise without written permission from Hornsby Shire Council. All rights reserved.

*Copyright © 2024 Hornsby Shire Council*



