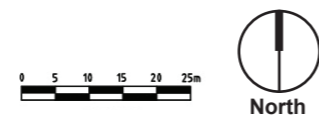




Note proposed district level playground shown as concept and further community consultation will occur when the design is further developed

**LANDSCAPE MASTERPLAN**



**KEY**

1. Upper water treatment and storage basin
2. Lower water treatment and storage basin
3. Sandstone seating wall
4. Upper circuit path over mound
5. 2m wide lower circuit path
6. Informal fitness steps amongst groundcovers and decorative grasses
7. Boardwalk
8. Existing Eucalypt grove along boundary
9. Fitness interval trail up mound featuring ropes and rock work
10. Fitness stations
11. Edward Bennett Oval
12. Sandstone seating wall
13. Stairs
14. 1.2m verge footpath
15. Expanded nature play area
16. Interactive play element
17. New prefabricated amenities block
18. Expanded picnic area hardstand
19. Existing loop track
20. Upgraded signage

**PROJECT DESCRIPTION**

This landscape masterplan introduces a number of elements into the park including a 2m wide circuit path, fitness stations and fitness trail, boardwalk through existing stands of Eucalypts, water treatment and harvesting basins, sandstone seating walls, verge footpath upgrades, a new amenities block and playground upgrades.

The proposed concrete circuit path (approx. 390m long) is planned to run around the perimeter of the park. A series of secondary paths and stairs will assist in navigating level changes into the park from Edward Bennett Drive.

The existing mound to the north of the oval will feature biofiltration basins and stormwater harvesting storage. The biofiltration basin will be a soil-plant based filtration system that will provide treatment to stormwater flows through a combination of physical screening and biological treatment. The soil media and plants will provide pollutant removal capabilities by supporting microbial processes that utilise nutrients amongst other pollutants. The treated stormwater will then be stored and reused to irrigate the park, these works will be funded by the catchment remediation program.

A boardwalk around the existing mound will showcase the existing mature trees along the boundary and a fitness interval circuit will navigate the level change on the rear of the mound. This area to the north of the oval will form a major highlight along the circuit path and will provide a point of difference to the largely flat path network.

A series of fitness pods, with a mix of fixed and moving items activate the northern tip of the park and are to be used in conjunction with the fitness trail that features a rock scramble track, ropes and informal steps.

The existing playground will be developed to incorporate an interactive play item (item 16). The north western edge of the playground will expand on the existing nature play. Additional native planting will frame the play area. At this stage the playground upgrade is only shown as concept and further community consultation will occur when the design is further developed

**CHARACTER IMAGERY**



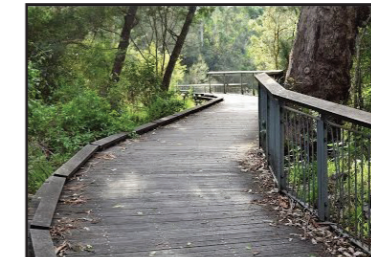
Fitness pods (item 10)



Informal fitness trail steps (6)



Rock scramble up mound (item 9)



Boardwalk showcasing gumtrees



Sandstone terraces



Rope to mound (item 9)



Mound fitness interval elements



Sandstone edge to basins



Interactive play (item 16)

**Parks, Trees and Recreation Branch**

Hornsby Shire Council  
296 Peats Ferry Road, Hornsby  
PO Box 37, Hornsby NSW 1630

Telephone 9847 6666  
8.30am - 5pm Mon-Fri

hornsby.nsw.gov.au

**EDWARD BENNETT OVAL**

EDWARD BENNETT DRIVE, CHERRYBROOK  
LANDSCAPE MASTERPLAN CONCEPT  
NOVEMBER 2022



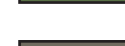
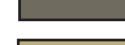

Proudly Funded By the  
NSW Government in association with  
Hornsby Shire Council

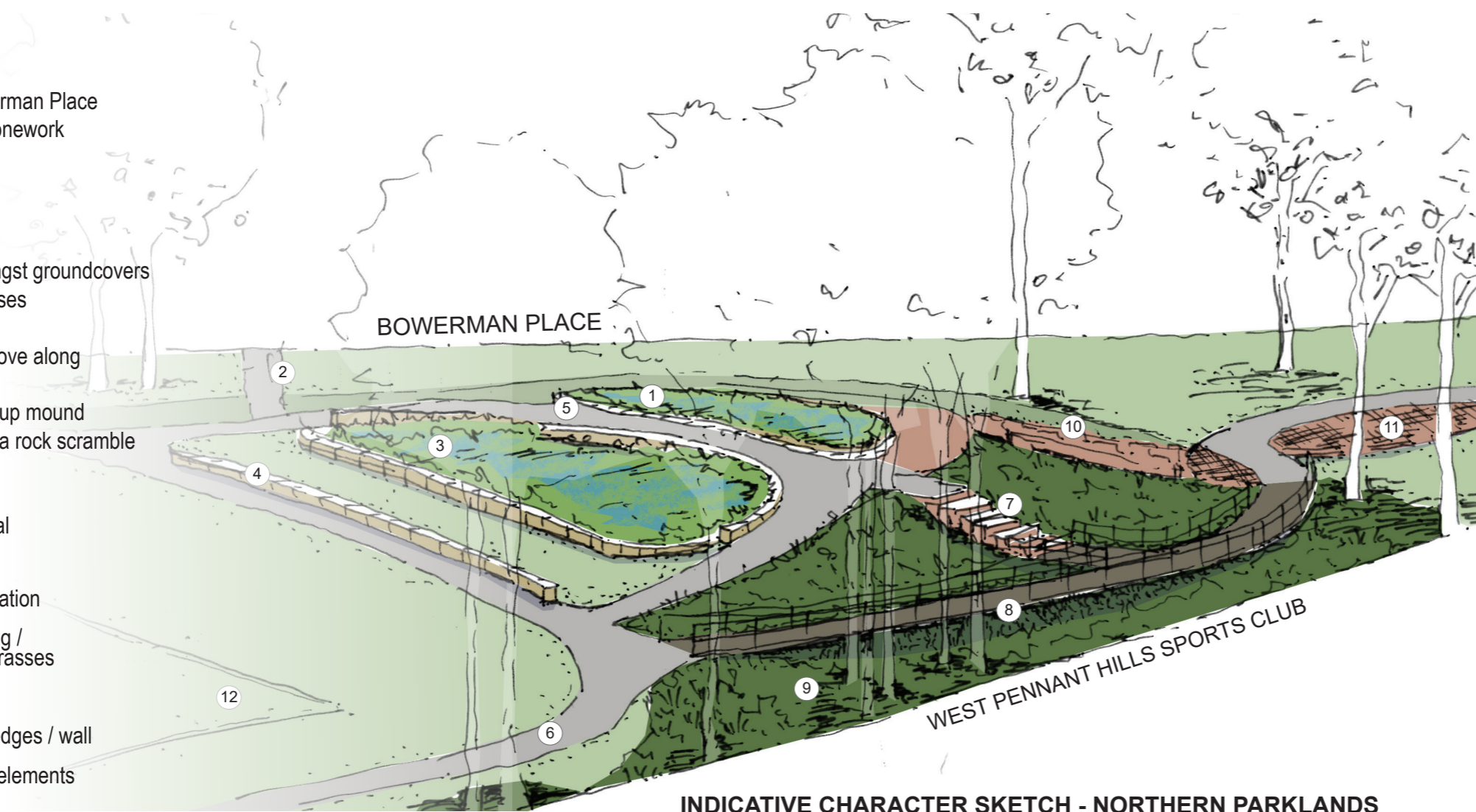


**KEY**

1. Upper basin
2. Connection to Bowerman Place
3. Lower basin with stonework perimeter
4. Sandstone seating
5. Upper circuit path
6. Lower circuit path
7. Informal steps amongst groundcovers and decorative grasses
8. Boardwalk
9. Existing Eucalypt grove along boundary
10. Fitness interval trail up mound featuring ropes and a rock scramble track
11. Fitness station
12. Edward Bennett Oval

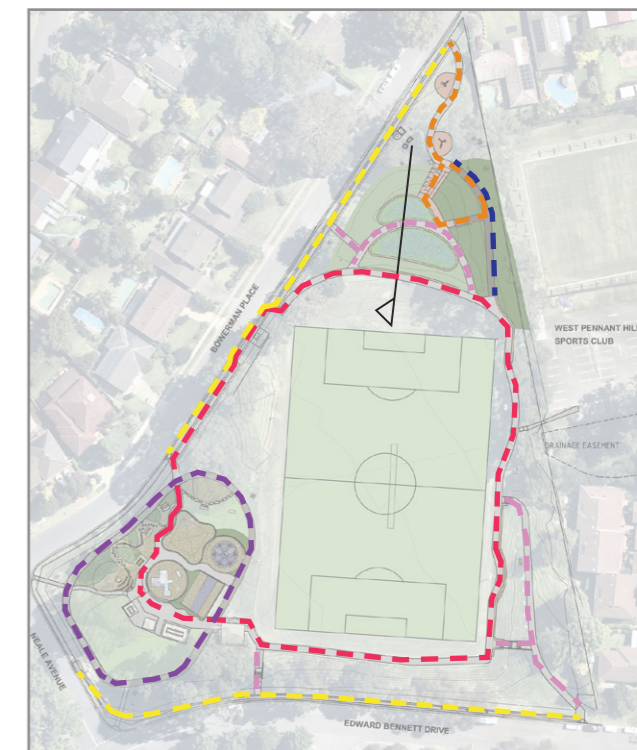
**LEGEND**

-  Basin/ vegetation
-  Mass planting / decorative grasses
-  Boardwalk
-  Sandstone edges / wall
-  Fitness trail elements









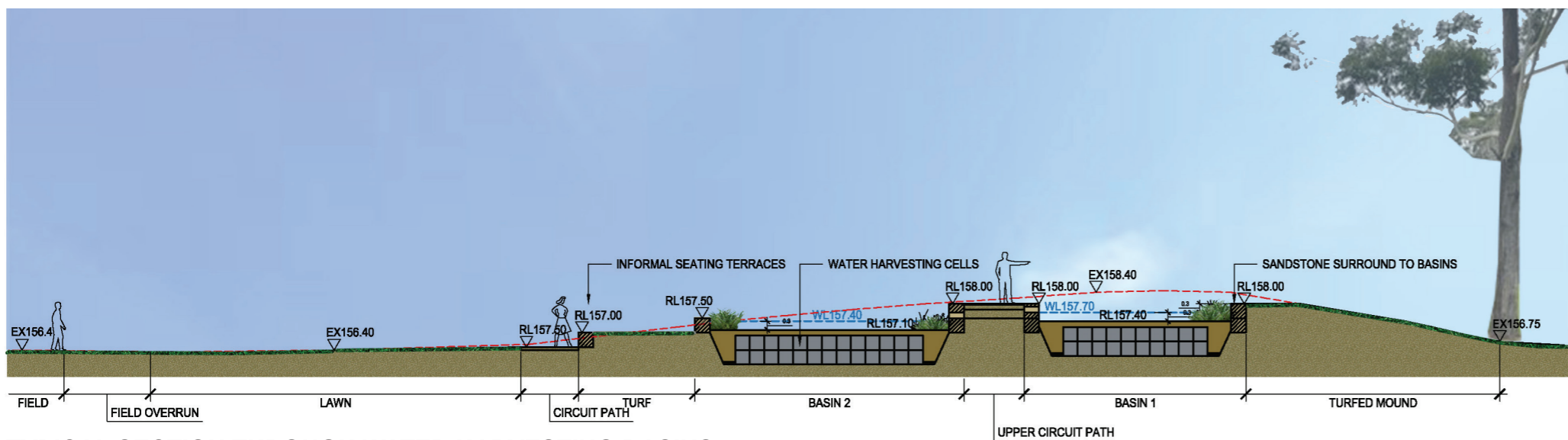
**INDICATIVE CHARACTER SKETCH - NORTHERN PARKLANDS**

**CIRCULATION DIAGRAM**



**LEGEND**

-  2m wide pedestrian circuit path
-  Fitness trail
-  Existing playground loop track
-  New 1.2m verge footpaths
-  Upper secondary paths
-  Boardwalk



**TYPICAL SECTION THROUGH WATER HARVESTING BASINS**

**EXISTING CHARACTER**



Northern mound where fitness elements are proposed Existing playground and picnic area

**Parks, Trees and Recreation Branch**

Hornsby Shire Council  
296 Peats Ferry Road, Hornsby  
PO Box 37, Hornsby NSW 1630

Telephone 9847 6666  
8.30am - 5pm Mon-Fri

[hornsby.nsw.gov.au](http://hornsby.nsw.gov.au)

**EDWARD BENNETT OVAL**

EDWARD BENNETT DRIVE, CHERRYBROOK  
LANDSCAPE MASTERPLAN CONCEPT  
NOVEMBER 2022

Proudly Funded By the  
NSW Government in association with  
Hornsby Shire Council

