



Implementing the Study

The Study will recommend amendments to the planning controls that apply to the Epping Town Centre. Both Hornsby Shire Council and Parramatta City Council will be required to prepare a new local environmental plan (LEP) and development control plan (DCP) to reflect the planning controls recommended by the Study.

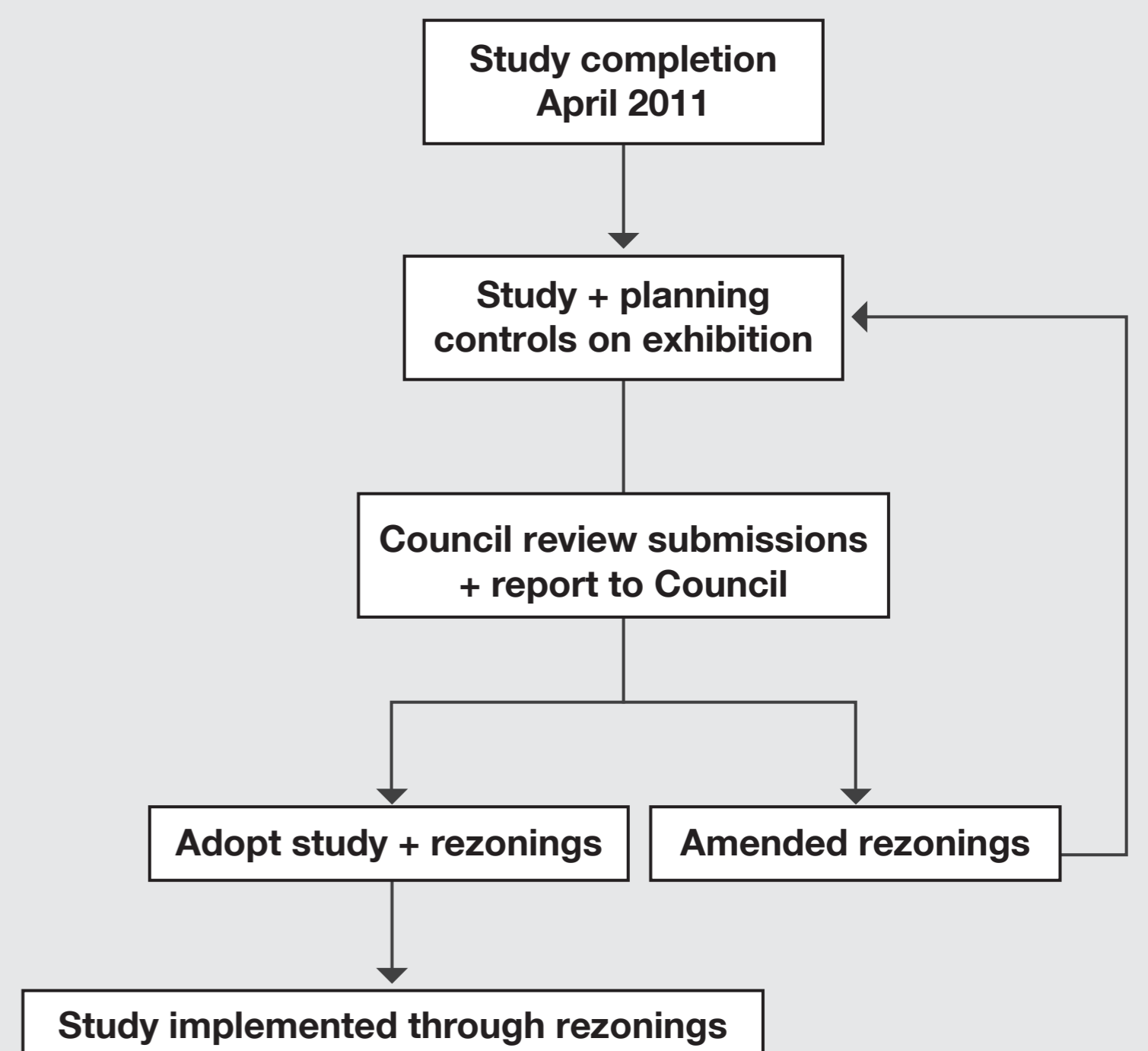
Community Input

- Stakeholder Reference Group
- Community Street Stall feedback
- Community input to previous studies
- Project email address eppingtowncentre@kjassoc.com.au

All comments for this stage of the project must be received by 10 December 2010.

The Study is a key input to a larger planning process. Inputs to the study include all previous studies carried out for the Epping Town centre area. Further opportunities to contribute to the planning outcomes will be available to the community as the project progresses. The flow chart below identifies the process to be undertaken to implement the Study, including further opportunities for consultation.

Steps to Implement the Study



Epping Town Centre Study

