

development applications



sediment control, watercourses
+ stormwater treatment



Hornsby Shire Council is the 'Bushland Shire'. Preserving the biodiversity of the area is critical in ensuring the survival of the ecosystems which exist in and around our properties. The complete assessment of Development Applications encompasses sediment control, watercourses and stormwater treatment to ensure developments are sensitive to these environmental constraints.

◇ erosion and sediment control plans

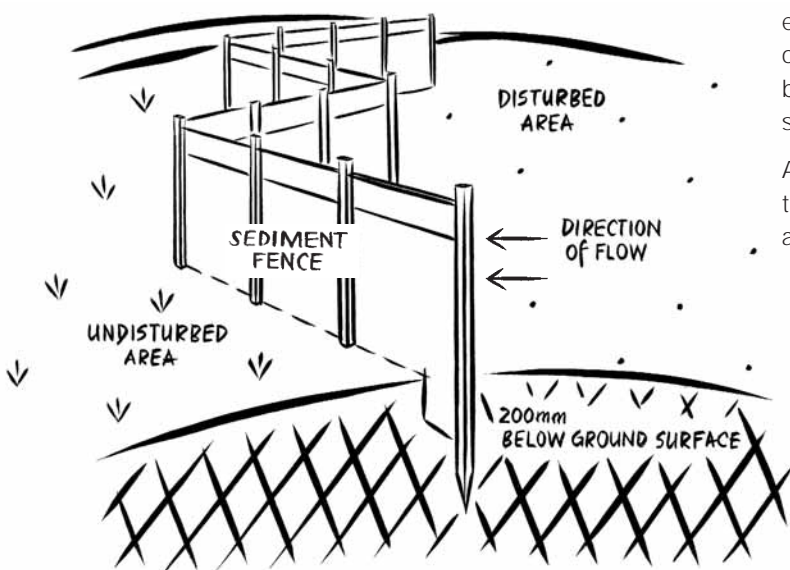
For proposals involving site disturbance of areas between 250 – 2500m² in size, an Erosion and Sediment Control Plan (ESCP) is required. The ESCP must be prepared by a qualified or experienced consultant and must detail the sediment and erosion control measures to be implemented during construction of the proposed development. The ESCP is to be submitted with a plan at 1:500 scale or larger plus supporting information.

A checklist available at www.hornsby.nsw.gov.au outlines the information that must be addressed and, where applicable, included in the ESCP.

◇ soil and water management plan

For proposals involving the site disturbance of greater than 2500m² in area, or where necessary, to protect the adjoining land and downstream water quality from sedimentation, a Soil & Water Management Plan (SWMP) is to be prepared by a suitably qualified and experienced consultant. The SWMP must detail the sediment and erosion control measures to be implemented during construction of the proposed development and is to be submitted with a plan at 1:500 scale or larger plus supporting information.

A checklist available at www.hornsby.nsw.gov.au outlines the information that must be addressed and, where applicable, included in the SWMP.



development applications



sediment control, watercourses + stormwater treatment

◇ watercourses

Watercourses should not be piped, filled, excavated or relocated.

Council is required to forward a copy of your development application to the NSW Department of Infrastructure Planning & Natural Resources if your proposal is within 40 metres of a designated watercourse. The proposal constitutes an integrated development and requires approval under the *Rivers and Foreshores Improvement Act 1948*. You are required to submit an extra copy of your application and the appropriate fee with your development application to Council.

For further information please visit the Department of Infrastructure, Planning and Natural Resources website at www.dipnr.nsw.gov.au.

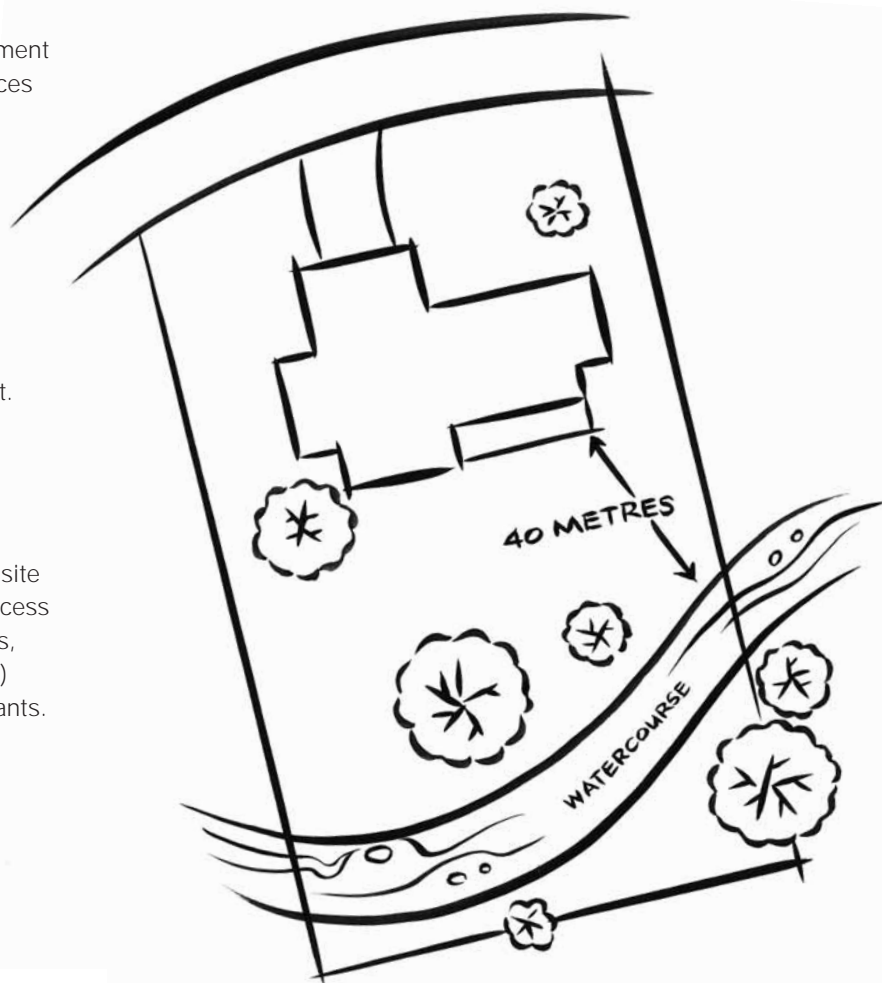
◇ stormwater treatment

Where applicable, you are required to provide engineering details of constructed wetlands, gross pollutant traps, trash racks or trash collection/separator units, regarding the collection and mitigation of stormwater pollution generated following the development. Pollutants include litter, floatable debris, organic debris, coarse sediments, suspended solids (road grit), grease and oil.

Any stormwater treatment device installed on site shall have a performance capture criteria in excess of 90% of litter, floatable debris, organic debris, coarse sediments, suspended solids (road grit) and grease and oil of gross stormwater pollutants.

report qualifications and inadequacy

Should you be required to submit a report to Council addressing any of these issues, the report must be completed by a suitably qualified and experienced consultant. Should Council deem that the report does not satisfactorily address assessment issues or is not completed by an appropriately qualified or experienced consultant, further information or an independent report may be requested.



THE BUSHLAND SHIRE
296 Pacific Highway
Hornsby NSW 2077
Telephone 9847 6666
8.30am - 5.00pm
www.hornsby.nsw.gov.au

FURTHER INFORMATION

General information on sediment control, watercourses and stormwater treatment can be obtained from the Water Catchments Team on 9847 6845 or visit the Department of Infrastructure, Planning and Natural Resources website at www.dipnr.nsw.gov.au