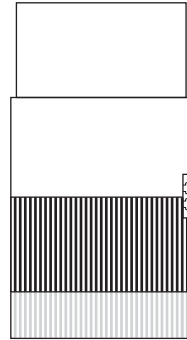


Architectural styles in Hornsby

VICTORIAN PERIOD (to c1890)



Vernacular cottage



Characteristic features

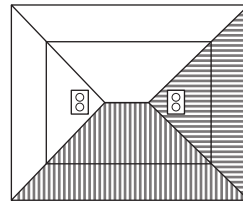
- Single fronted, symmetrical massing
- Gable roof, open front verandah with little decoration
- Simple brick chimney
- Skillion lean-to's to the rear
- Timber louvred shutters to windows

Materials

- Face brick with corrugated iron roofing
- Brick rendered window sill
- Timber verandah and brick steps



Homestead



Characteristic features

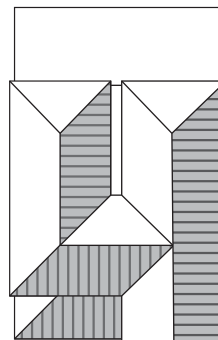
- Three bay single fronted form, symmetrical massing
- Hipped roof
- Wrap-around verandah with square timber posts
- Face brick chimney

Materials

- Beaded weatherboard or face brick walls
- Corrugated metal roof



Victorian house



Characteristic features

- Double fronted form with steep (Gothic style) hipped roof
- Bullnose verandah, cast iron lace and columns
- Imitation quoins to corners, Queen Anne Revival style pilasters and arch mouldings to windows
- Decorative chimney with Queen Anne revival style mouldings

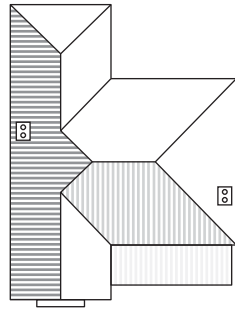
Materials

- Rendered brick walls, slate roofing
- Fretted Gothic style barge boards

FEDERATION PERIOD (c1890-1915)



Federation house



Characteristic features

- Asymmetrical plan
- Prominent hipped and gabled roof with decorative features, shaped bargeboards
- Turned or fretted woodwork to verandahs
- Casement windows, window hoods
- Tall chimneys with decorative terracotta chimney pots

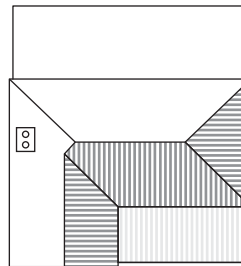
Materials

- Face brick walls and window sills
- Stone basecourse
- Terracotta or slate roofing with decorative finials and ridge capping

EDWARDIAN PERIOD (c1900-1915)



Edwardian cottage



Characteristic features

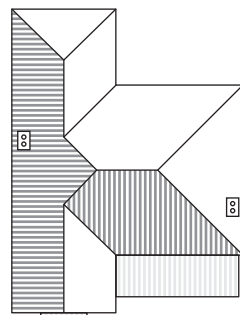
- Asymmetrical form
- Open front verandah
- Hipped and gabled roof

Materials

- Weatherboard with metal roof



Arts and crafts house



Characteristic features

- Asymmetrical complex form, prominent hipped and gabled roof
- Articulated facades, bay windows, projecting elements, decorative timber work

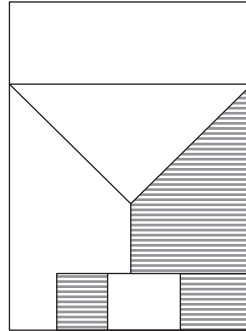
Materials

- Face brick walls and sills, roughcast render and stub verandah columns
- Slate or terracotta roof tiles
- Terracotta chimney pots above tapered rough-cast rendered chimneys

INTERWAR PERIOD (c1915-1940)



Inter War Bungalow (c1918-1930)



Characteristic features

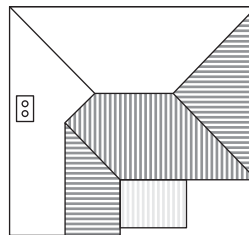
Asymmetrical front, gabled roof, simple wide barge boards and battening to gables
Casement windows with flat bay roof and bracketed eaves

Materials

Liver brick walls, terracotta tiled roof
Pebble dash or roughly hewn stone basecourse
Rendered copings and caps, decorative shingles and vent grilles



Colonial revival

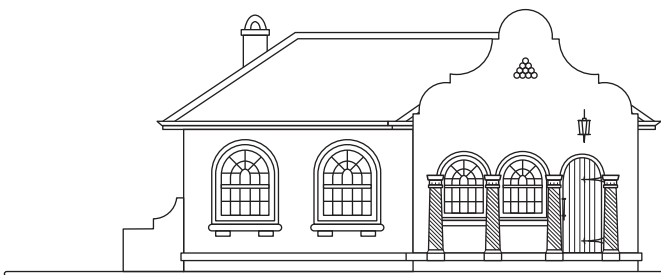


Characteristic features

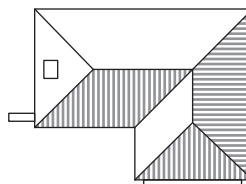
Double fronted form with hipped roof
Entry porch, no verandah
Double hung sash windows, stone sills and louvred shutters
Half glazed door with side lights

Materials

Rendered brick walls on rock faced sandstone base course
Terracotta roof tiles or shingles
Rendered chimney shaft



Spanish mission house (c1935-1950)



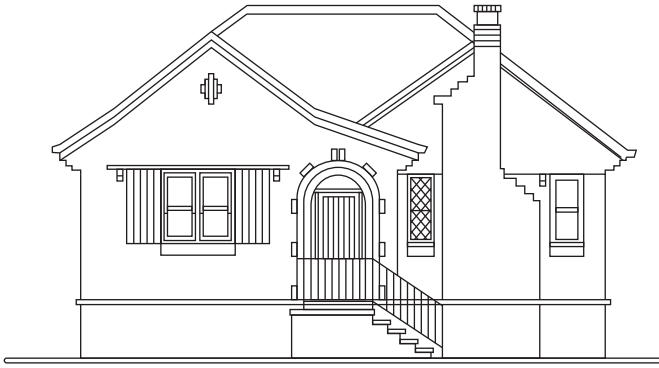
Characteristic features

Shaped gabled façade and hipped roof
Semi-circular arches and window heads
Barley twist columns, framed and sheeted door with semi-circular head
Multi-paned windows with semi-circular heads

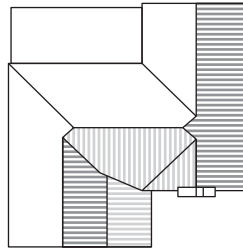
Materials

Rendered brick (cream) walls, terracotta tiled roof with ridge capping
Gabled chimney stack

POST WAR (c1940-1960)



Cottage revival



Characteristic features

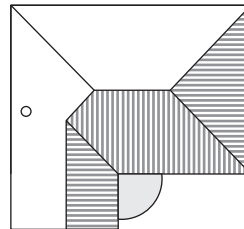
- Double fronted gable form, hipped roof and projecting gables
- Entrance porch, no verandah
- Double hung sash windows

Materials

- Face brick walls, terracotta tiled roof
- Brick string courses, corbelling in contrasting brickwork



Post War cottage



Characteristic features

- Double fronted form with hipped roof
- Double hung box framed windows
- Entry porch, no verandah
- Simple chimney

Materials

- Fibro-clad walls, terracotta tiled roof
- Timber windows