

2 June 2015

Ref. N0029

Dear Resident,

NorthConnex early work activities: Services and utility investigations, Wahroonga

NorthConnex is a nine kilometre tunnel that will link the M1 Pacific Motorway at Wahroonga to the Hills M2 Motorway at West Pennant Hills, removing around 5,000 trucks off Pennant Hills Road.

Lend Lease Bouygues Joint Venture has been awarded the contract to design and deliver the work.

What are we doing?

From 15 June 2015, services and utility investigations will take place in the following streets in Wahroonga:

- Burns Road
- Bareena Avenue
- Lochville Street
- Benson Close
- Douglas Avenue
- Woonona Avenue.

Most locations are within the road corridor. Access to private property, if required, will be negotiated in advance with property owners.

The work will continue until early July, weather permitting and includes:

- Searching for locations of services including breaking up the road surface
- Marking up locations in different coloured paint
- Non-destructive excavation to locate the services
- Repair of the road surface at the completion of the investigation.

Plant and equipment for this work includes saw cutters, jack hammers, vacuum truck, jet blasters and compacting asphalt machines.

Return 
**local streets to
local communities**

Up to 
5,000 trucks per day
off Pennant Hills Road

Up to 
15 mins **travel time
saving**


Deliver **improvements**
to local **air quality**

Up to 
21 **traffic lights
bypassed**

improve 
the **efficient movement** of
state and **national freight**


Better and more
reliable trips
for people, businesses and freight

Traffic management will be in place to ensure safety of motorists, residents and workers. This will include temporary diversion of the footpath in the immediate vicinity of the work and stop/slow traffic arrangements staffed by traffic management personnel on local roads.

Work will take place Monday to Friday between 7am and 6pm and Saturday between 8am and 1pm in residential areas and no work will occur on Sundays or Public Holidays.

You may experience increased noise during this period. We apologise for any inconvenience caused and will take steps to minimise any impact associated with this important work.

Please note this investigation work will not cause vibration or have an impact on your property. Before any major construction activities take place on the site (including the removal of the existing building structures) a property condition survey will be carried out on your property if required. The project team will be contacting you in the near future to explain this process and arrange access to your property to complete the survey.

We thank you for your patience, and if you have any questions, please don't hesitate to call members of the project team on **1800 997 057**, email <mailto:enquiries@northconnex.com.au> or visit the NorthConnex Community Information Centre at 354 - 356 Pennant Hills Road, Pennant Hills, open every Tuesday from 9am to 12pm and Thursday from 9am to 4pm.

Yours sincerely

NorthConnex Project Team



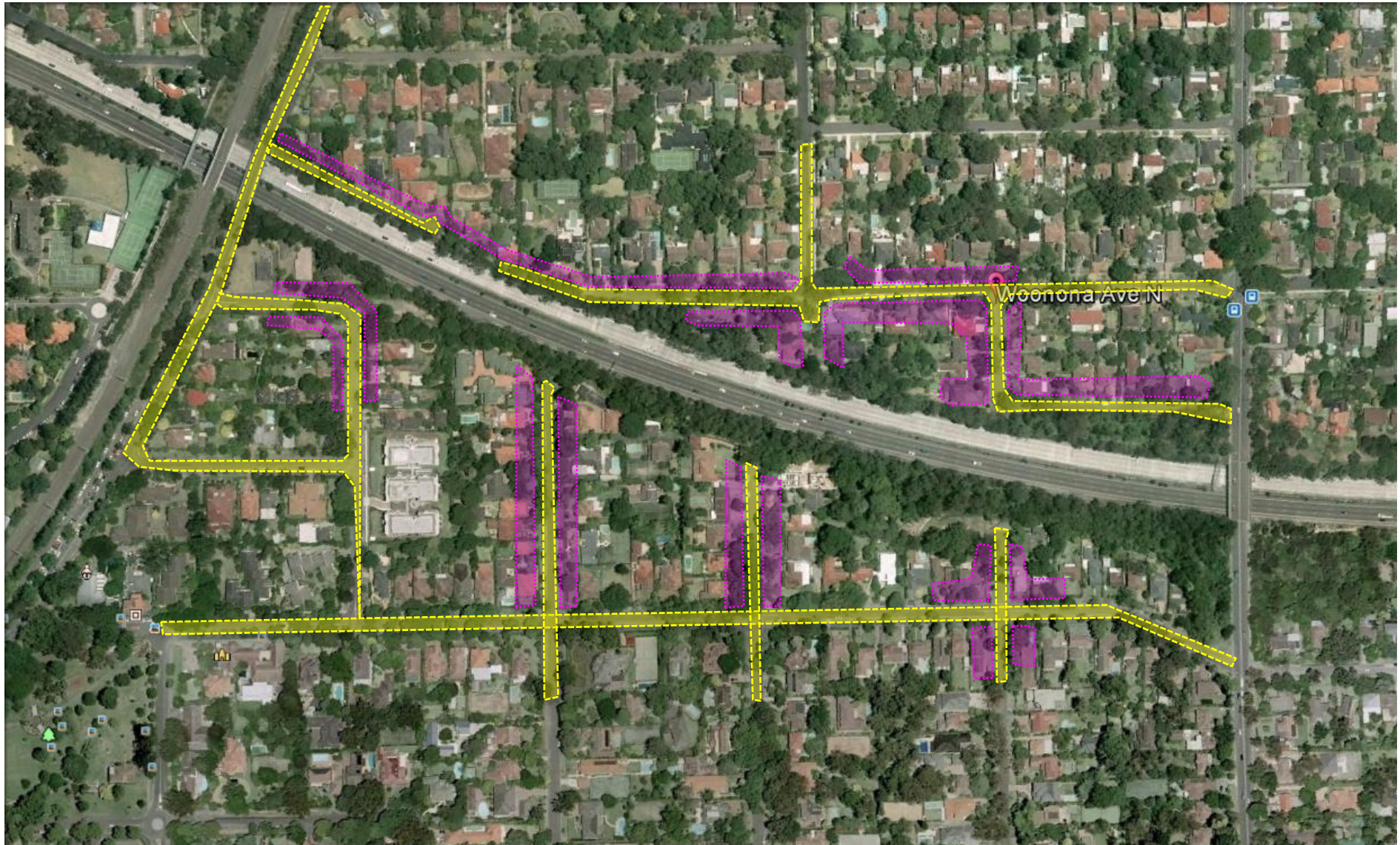
www.northconnex.com.au



enquiries@northconnex.com.au



1800 997 057 (free call)



KEY

Notification Distribution Area
Doorknock Area

