

17 August 2015

Ref. N0059

Dear Resident,

M1 Pacific Motorway, Wahroonga – concrete coring night work

In preparation for the M1 Pacific Motorway widening work, concrete coring will be carried out at night on six sections of the M1 Pacific Motorway in Wahroonga, between Edgeworth David Drive and the Pacific Highway.

The coring is required to inform the final design for the M1 Pacific Motorway widening work required for NorthConnex.

What are we doing?

This work will take two nights to complete, weather permitting and will involve the closure of the northbound and southbound slow lanes between Edgeworth David Drive and the Pacific Motorway for one night each. To minimise impact on motorists, work will occur outside peak times between **8pm and 5am on 27 and 28 August**.

Core samples 100m wide and around 500mm deep will be removed from the road surface. Plant and equipment includes lighting towers, traffic control vehicles and signage, light vehicles, a small core drilling machine and hand tools.

The six work locations on the M1 Pacific Motorway are next to Bareena Avenue, Woonona Avenue, Lochville Street and Junction Road, as indicated in the map on the reverse side of this letter.

We will make every effort to minimise impacts by:

- Turning off machinery when not in use
- Using non-tonal reversing beepers on all machinery
- Scheduling the noisiest work to occur before midnight on both nights.

Return 
**local streets to
local communities**

Up to 
5,000 trucks per day
off Pennant Hills Road

Up to 
15 mins **travel time
saving**


Deliver **improvements**
to local **air quality**

Up to 
21 **traffic lights
bypassed**

improve 
the efficient movement of
state and national freight

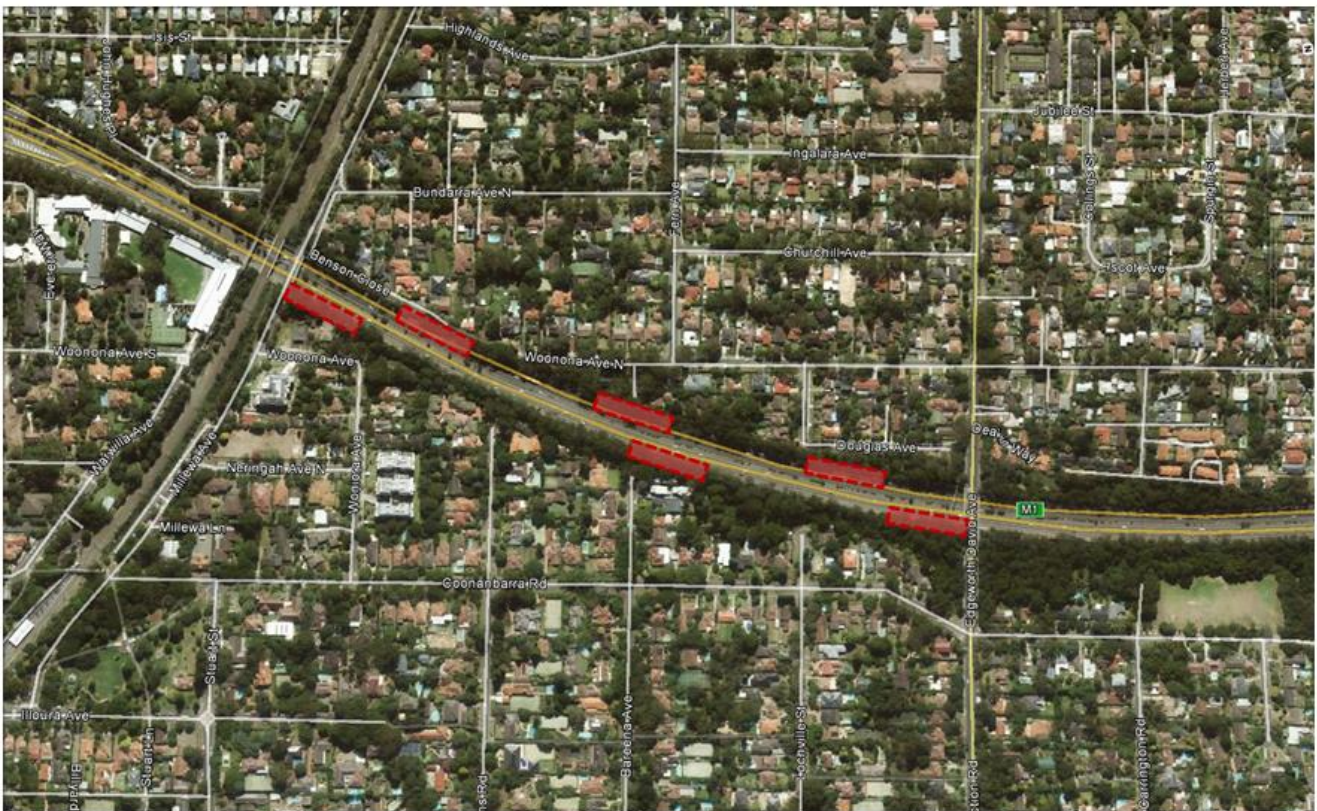

Better and more
reliable trips
for people, businesses and freight

We apologise for any inconvenience this may cause. We thank you for your patience, and if you have any questions or complaints, please do not hesitate to call members of the project team on **1800 997 057**, email <mailto:enquiries@northconnex.com.au> or visit the NorthConnex Community Information Centre at 354 - 356 Pennant Hills Road, Pennant Hills, open every Tuesday from 9am to 12noon and Thursday from 9am to 4pm and the last Saturday of the month 9am to 1pm (August through to November 2015).


Yours sincerely

NorthConnex Project Team

Map shows location of concrete coring activities on M1 Pacific Motorway



NorthConnex
Building for the future

KEY Work Zones 

 www.northconnex.com.au

 enquiries@northconnex.com.au

 1800 997 057 (free call)